

## Solar Energy South Africa

# Cameroon li ion battery long term storage



## Overview

---

What is a good country of rate for storing long-term lithium-ion batteries?

The most advantageous country of rate (SoC) for storing long-term lithium-ion batteries is around 30% to 50%. This range balances the need to minimize stress on the battery cells while stopping the battery from dropping to a damagingly low-rate stage throughout the garage.

Are lithium-ion batteries good for long-term storage?

Lithium-ion batteries are great for electronics or devices with high energy requirements that get used daily. However, Li-ion batteries are not suited for long-term storage. They quickly lose their charges and can go beyond the recoverable level. If you do need to store lithium-ion rechargeable batteries, make sure to follow these guidelines.

What is the ideal charge level for storing lithium batteries?

The ideal charge level for storing lithium batteries is around 40-50% of their capacity. Storing a lithium-ion battery at full charge puts stress on its components, potentially leading to a faster loss of capacity over time. Conversely, allowing a battery to discharge completely before storage can cause irreversible damage.

How much charge should a lithium ion battery be?

However, for long-term storage, it is advisable to charge the batteries to about 50%. This intermediate charge level helps to preserve the battery's overall performance and prevent excessive self-discharge. When it comes to lithium-ion batteries, it's important to avoid fully discharging them whenever possible.

How long do lithium ion batteries last?

Lithium-ion batteries can last from 300-15,000 full cycles. Partial discharges and recharges can extend battery life. Some equipment may require full

discharge, but manufacturers usually use battery chemistries designed for high drain rates. How does storage/operating temperature impact lithium batteries?

.

Are lithium-ion batteries safe?

However, these advanced features come with a caveat: lithium-ion batteries require specific care, especially when it comes to storage. Not only does proper lithium battery storage ensure safety, but it also protects your investment by maximizing battery lifespan and maintaining peak performance.

## Cameroon Li ion battery long term storage



### Best Storage Options For Lithium Ion Batteries: Where To Store ...

For businesses that deal with larger quantities of lithium-ion batteries, proper storage practices become even more critical. Here are a few additional considerations for businesses: 1. Follow Manufacturer Guidelines. Lithium-ion battery manufacturers often provide specific guidelines for storage and handling.

### Degradation Analysis of Commercial Lithium-Ion Battery in Long-Term Storage

Degradation Analysis of Commercial Lithium-Ion Battery in Long-Term Storage. Taolin Lu 1,2, Ying Luo 1,2,3, Yixiao Zhang 2,3, Weilin Luo 2,3, Agubra V. and Fergus J. 2014 "Modeling of degradation effects considering side reactions for a pouch type Li-ion polymer battery with carbon anode" Journal of Power Sources 261 120.



### How to Store Lithium-Ion Batteries , Securall

Long-Term Storage: If you plan to store a lithium-ion battery for an extended period, it's generally recommended to store it with a charge level between 40% and 60%. This range helps prevent the battery from becoming overly ...

## Net-zero power: Long-duration energy storage for a renewable grid

LDES encompasses a group of conventional and novel technologies, including mechanical, thermal, electrochemical, and chemical storage, that can be deployed competitively to store energy for prolonged periods and scaled up economically to sustain electricity provision, for days or even weeks. 1 The study focuses on these nascent technologies



## How to Store Lithium-Ion Batteries , Securall

Here are key considerations for lithium-ion battery storage: Charge Level: Long-Term Storage: If you plan to store a lithium-ion battery for an extended period, it's generally recommended to store it with a charge level between 40% and 60%. This range helps prevent the battery from becoming overly discharged, which can lead to capacity loss.

## Long-Term Health State Estimation of Energy Storage Lithium-Ion Battery ...

This book investigates in detail long-term health state estimation technology of energy storage systems, assessing its potential use to replace common filtering methods that constructs by equivalent circuit model with a data-driven method combined with electrochemical modeling, which can reflect the battery internal characteristics, the battery degradation modes, ...



## A Complete Guide for Storing

## Lithium Ion Batteries

Long-term storage: In order to keep the battery's activity and recovery performance, the ambient temperature should ideally be between 10°C and 30°C during long-term storage. Additionally, it is important to execute a ...



### cameroon iron-lithium battery energy storage container

48v 100ah 5Kwh lithium lifepo4 energy storage container off. Bloo power 48v 100ah 5Kwh lithium lifepo4 energy storage container off grid or hybrid or grid Wall mounted battery#solar #solarsystem #solarpower #solarenerg



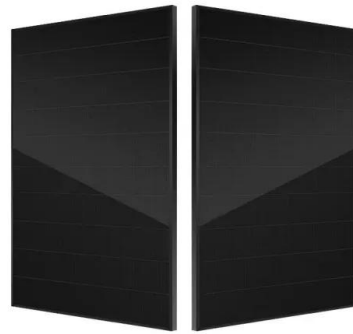
### Fast-charge, long-duration storage in lithium batteries

The large difference in energy density of fossil fuels (e.g., 12 kWh/kg for a commercial grade gasoline) in comparison with state-of-the-art lithium (Li)-ion batteries (0.15 kWh/kg) poses formidable barriers to broad-based adoption of electrification in the transportation sector. Significant progress has been made in recent years to reduce limitations associated ...

### [Li-ion batteries in storage : r/batteries](#)

Fully charged Li-Ion - degrades the chemistry inside the cells when storage is above 48H as its full of "power" that needs to do "something" Fully Discharge - Because the charge is too low, the chemistry starts to change inside the cell if not charged for long periods of time A normal Li-Ion

cell voltage is 3.6V (nominal), 4.2V (fully charged)



### Why lithium-ion isn't the answer for long-term stationary energy storage

Li-ion also couples battery power and energy capacity, eliminating the economic viability of long-duration energy storage services. Understand that li-ion has become a high-risk investment From fire risk to operational burdens and other inherent issues, project decision-makers should have a clear picture of li-ion's limitations.

### Long-Term Health State Estimation of Energy Storage

...

mation and long-term battery pack health state estimation. The focus of this book 2.2 SP Modeling of Energy Storage Lithium Battery Considering the Influence of SEI Film .. 23 2.2.1 Research on the Simplification Mechanism of SP Model . 23 2.2.2 Solution of Open-Circuit Voltage Based on Solid-Phase



### ROYPOW S51105L 48V 105Ah Lithium Golf Cart Battery , ROYPOW



Give you a better performance on battery upgrading: BENEFITS Easy golf cart installation, no modification. Easier to climbing hill with more acceleration and speed. Batteries charge quickly to increase your productivity. No maintenance any more. Suitable for most models of ...

## How to Store Lithium Batteries Safely: A Complete Guide

The state of charge is a often-overlooked yet critical factor in lithium battery storage, especially for long-term storage. Unlike some other battery types, lithium-ion batteries should neither be stored fully charged nor completely discharged. The ideal charge level for storing lithium batteries is around 40-50% of their capacity. Storing a



## IoT real time system for monitoring lithium-ion battery long-term

Both predefined and customizable time intervals can be chosen by the user, so instant, short and long-term data can be easily displayed. The ability of selecting different presentation intervals is an advantage for R& D projects, among others in renewable energies and battery energy storage [35]. Besides, each panel can be seen in full screen

## Lithium-ion battery storage , Jungheinrich PROFISHOP

It is not recommended that a lithium-ion battery

be put into storage empty, but rather at a charge capacity of 50 to 70 percent. This prevents a deep discharge, which can have a negative effect on battery performance, shorten service life or even cause the Li-ion battery to stop functioning. Check the charge level regularly



## Storing Lithium Ion Batteries Long-Term : r/Nerf

Storing Lithium Ion Batteries Long-Term . I'm no expert but 10 years is an insanely long time to keep a lipo battery in storage. It is suggested to use different techniques such as storage charging and of course keeping them in fire resistant bags in safe environments. So unless you plan on setting aside some time to make sure they are

## How to Store Lithium-Ion Batteries , Securall

Here are key considerations for lithium-ion battery storage: Charge Level: Long-Term Storage: If you plan to store a lithium-ion battery for an extended period, it's generally recommended to store it with a charge level between 40% and 60%. ...



## LiPo Battery Storage: Best Practices You Need to Know

3.7 V Li-ion Battery 30mAh~500mAh 3.7 V Li-ion Battery 500mAh~1000mAh 3.7 V Li-ion Battery 1000mah~2000mAh 3.7 V Li-ion Battery 2000mAh~12000mAh Long-term storage LiPo battery. Long-term storage of LiPo (Lithium

Polymer) batteries requires specific measures to maintain their health and performance over extended periods.



## A Beginners Guide to the Best Batteries for Long Term Storage ...

Rechargeable NiMH LSD (Choose one option)  
 Eneloop 2000mAh AA or 800mAh batteries:  
 Rechargeable up to 2,100 times, maintain 70% of their charge after 10 years - Check on Amazon  
 Fujitsu 2000mAh AA or 800mAh AAA batteries:  
 Rechargeable up to 2,100 times and retains 70% of their charge for 5 years - Check on Amazon  
 Lithium (Non ...



## How to Store Lithium LiFePO4 Batteries for Long Term

Over-discharging can cause serious and irreversible damage to your battery even when it is under warranty. That is why storing the battery with a state of charge of more than 50% is recommended to be at a safe end. How long can you store a LiFePO4 battery? We can store liFePO4 batteries on both short-term and long-term basis.

## How to Store Lithium Batteries Safely: A Complete Guide

Storing a lithium-ion battery at full charge puts

stress on its components, potentially leading to a faster loss of capacity over time. Conversely, allowing a battery to discharge completely before storage can cause ...



## Utility-Scale Battery Storage , Electricity , 2024

The Storage Futures Study report (Augustine and Blair, 2021) indicates NREL, BloombergNEF, and others anticipate the growth of the overall battery industry--across the consumer electronics sector, the transportation sector, and the electric utility sector--will lead to cost reductions in the long term. In the short term, some analysts expect

## Unraveling capacity recovery behavior of 78 Ah pouch cells after long ...

To unravel the capacity recovery phenomenon, wherein the decreased capacity due to the long-term storage of the battery was slowly recovered through the activation process, we used large-format pouch cells that experienced small degradation and capacity fading up to 500 cycles. experiment and high-efficient model of Li-ion battery



## Best Practices for Charging, Maintaining, and Storing ...

However, for long-term storage, it is advisable to



charge the batteries to about 50%. This intermediate charge level helps to preserve the battery's overall performance and prevent excessive self-discharge. Depth of Discharge. When ...

## Lithium-ion battery storage: Maximizing Lifespan and Performance

Avoid storage voltage for lithium ion battery high temperatures, as it can shorten the battery life and in severe cases can lead to an explosion. If possible, it can be stored in a refrigerator. If the laptop is using AC power, please remove the lithium-ion battery to avoid being affected by the heat generated by the computer. 5.



## How Long Do Lithium Batteries Last in Storage?

A charge level between 40-60% is considered ideal for long-term storage. This helps to ensure that the battery remains stable and doesn't experience excessive self-discharge during storage. Factors Affecting Battery Lifespan and Performance. Several factors can affect the lifespan and performance of lithium batteries in storage.

## Modeling long-term capacity degradation of lithium-ion batteries

Once having accepted a long-term model,

parameter fitting is thereafter possible with short-term experiments and/or by using small training samples. In the following, we propose and adopt a parametric model to serve as a functional relationship between the cell capacity and cyclic aging of a lithium-ion battery.



## Degradation Analysis of Commercial Lithium-Ion Battery in Long-Term Storage

Battery degradation will happen in the process of storage, resulting in capacity diminishment and augmentation of inherent resistance. The understanding of the aging mechanism is crucial to

## Contact Us

---

For catalog requests, pricing, or partnerships, please visit:  
<https://www.ian-solar.co.za>