

Solar Energy South Africa

Changyuan Wind Power Generation



Overview

Will China slow down the growth of PV & wind power?

There is also a chance that the growth of PV and wind power in China slows down owing to decreasing governmental subsidies 20, a lack of transmission infrastructure 6 and restrictions for protecting agricultural, industrial and urban lands 21.

What is the capacity of PV & wind power plants in 2021–2060?

In a baseline scenario, the capacity of individual PV and wind power plants is limited to 10 GW without electricity transmission and energy storage, whereas the growth rate of PV and wind power is constant during 2021–2060 without considering the dynamics of learning.

Can large power plants be built in China?

The feasibility of building large power plants in China could be supported by commissions of the Jiuquan onshore wind power plant at 20 GW and the Yanchi PV power plant at 1 GW, but it entails high requirements on grid integration, electricity transmission and initial investment 38.

How are PV and wind power plants estimated?

The installed capacity (a) and costs (b) of PV and wind power plants built during 2020–2060 are estimated in our model by optimizing the construction time of individual power plants at a temporal interval of 5 years (bars) or 10 years (stars).

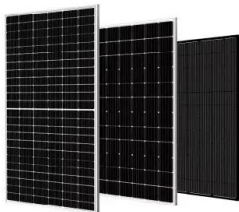
How can solar and wind power help China's poorest residents?

By increasing the carbon price from \$0 to \$100 per tCO₂, deployment of PV and wind power benefits the poorest residents, with an increase in per-capita income from \$29,000 to \$34,400 in North China and from \$29,100 to \$30,600 in Northwest China.

Will China's energy system reach 5 PWh by 2060?

Following the historical rates of renewable installation 1, a recent high-resolution energy-system model 6 and forecasts based on China's 14th Five-year Energy Development (CFED) 7, however, only indicate that the capacity will reach 5–9.5 PWh year –1 by 2060.

Changyuan Wind Power Generation



How Do Wind Turbines Work? , Department of Energy

The terms "wind energy" and "wind power" both describe the process by which the wind is used to generate mechanical power or electricity. This mechanical power can be used for specific ...

Wind Power Plant

What is a Wind Power Plant? A wind power plant is also known as a wind farm or wind turbine. A wind power plant is a renewable source of electrical energy. The wind turbine is designed to use the speed and power of wind and convert it ...



Contact Us

For catalog requests, pricing, or partnerships, please visit:
<https://www.ian-solar.co.za>