

## Solar Energy South Africa

# Energy recovery systems I South Georgia and South Sandwich Islands



IP65/IP55 OUTDOOR CABINET

OUTDOOR MODULE CABINET

OUTDOOR ENERGY STORAGE  
CABINET

19 INCH

## Overview

---

What happened to South Georgia and the South Sandwich Islands?

In 1985, South Georgia and the South Sandwich Islands ceased to be administered as a Falkland Islands Dependency and became a separate territory. The King Edward Point base, which had become a small military garrison after the Falklands War, returned to civilian use in 2001 and is now operated by the British Antarctic Survey.

Who owns South Georgia and the South Sandwich Islands?

The United Kingdom claimed sovereignty over South Georgia in 1775 and the South Sandwich Islands in 1908. The territory of "South Georgia and the South Sandwich Islands" was formed in 1985; previously, it had been governed as part of the Falkland Islands Dependencies.

What is the ccTLD for South Georgia and the South Sandwich Islands?

The Internet country code top-level domain (ccTLD) for South Georgia and the South Sandwich Islands is .gs. The parts of the islands that are not permanently covered in snow or ice are part of the Scotia Sea Islands tundra ecoregion.

## Energy recovery systems | South Georgia and South Sandwich Islands

**12.8V 100Ah**



### South Sandwich Islands , Volcanic, Map, & Facts , Britannica

South Sandwich Islands, group of actively volcanic islets in the South Atlantic Ocean, north of the Weddell Sea and 470 miles (760 km) southeast of the island of South Georgia. They extend for 190 miles (305 km), occupy 120 square miles (310 square km), and are covered with glaciers. Until 1985 they were included within the Falkland Islands (Islas ...

### South Georgia and the South Sandwich Islands

British overseas territory in the Southern Atlantic Ocean. This page was last edited on 27 November 2024, at 11:44. All structured data from the main, Property, Lexeme, and EntitySchema namespaces is available under the Creative Commons CC0 License; text in the other namespaces is available under the Creative Commons Attribution-ShareAlike License; ...



### South Georgia and South Sandwich Islands , World Factbook

note: includes Shag Rocks, Black Rock, Clerke Rocks, South Georgia Island, Bird Island, and the South Sandwich Islands, which consist of 11 islands country comparison to the world: 177. Area - comparative . slightly larger than Rhode Island. Land boundaries . 0 km. Coastline . NA. Maritime claims . territorial sea: 12nm exclusive

fishing zone

## South Georgia and the South Sandwich Islands

South Georgia and the South Sandwich Islands Cruises to Antarctica, Polar Travel With Cool Antarctica and Antarctica Travels Notes \* Prices are per person. the lowest price is usually for triple occupancy in a basic cabin, the highest for double occupancy in the best available suite. Options such as kayaking are usually booked when the cruise is booked, they may be at ...



## South Georgia and the South Sandwich Islands

South Georgia and the South Sandwich Islands Basic statistics Current diversification (number of products) 57 Potential new products more complex (percentage) 44 Potential new products 1,196 Export opportunity in more complex products (percentage) 9 Potential new products more complex than the country's average 525

## South Georgia and South Sandwich Islands

Together, South Georgia and the South Sandwich Islands form part of the Scotia Arc, which extends from the tip of South America to Antarctica (and also includes the South Shetland and South Orkney Islands, though these are not part of the British dependency). The island of South Georgia is 105 mi (170 km) long, and about 25 mi (40 km) wide.



## South Georgia and South



## Sandwich Islands

Location: Shag Rocks general pelagic--over 2 miles offshore South Georgia and South Sandwich Islands. Great Shearwater *Ardenna gravis* # Count: 1. Date: 11 Dec 2024. Observer: Letitia Lussier. Location: Shag Rocks general pelagic--over 2 miles offshore South Georgia and South Sandwich Islands.

## South Georgia and South Sandwich Islands

With 11 main islands and several smaller islets, the South Sandwich Islands are also part of the South Georgia British Overseas Territory, despite lying around over 700-kilometres southeast. Volcanic in origin, this island chain is incredibly

...



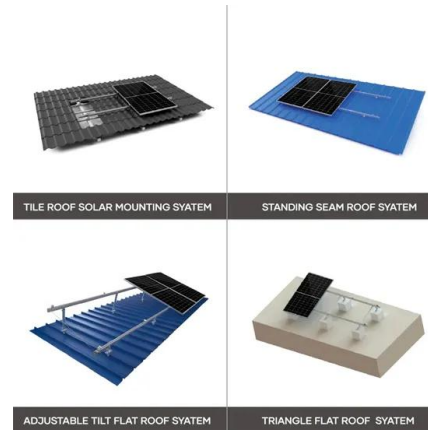
## South Georgia and The South Sandwich Islands

South Georgia and The South Sandwich Islands : Stamps : Years List : Colnect. Buy, sell, trade and exchange collectibles easily with Colnect collectors community. Only Colnect automatically matches collectibles you want with collectibles collectors offer for sale or swap. Colnect collectors club revolutionizes your collecting experience!

## Airports near South Georgia and the South Sandwich Islands

Frequently asked questions. Want to know about travelling to South Georgia and the South Sandwich Islands? We have put together a list of

the most frequently asked questions from our users such as: What is the cheapest mode of transport?, What is the quickest option?, How much do tickets usually cost? and many more.



## South Georgia and the South Sandwich Islands

1 South Georgia Island is the only inhabited island, with the summer-only settlement of Grytviken, and the only one regularly visited by cruise ships. Minor islands are ranged along its north coast - those visited by cruises are Willis, Bird, Albatross and Prion, and Cooper. The south coast is exposed to raging winds and waves and is seldom visited - Annenkov is the only large island ...

## South Georgia and the South Sandwich Islands , Tracking SDG 7 ...

1 World Bank Income Classification as of the Fiscal Year 2023 2 GDP, Power Purchasing Parity (constant 2017 international \$) from the World Development Indicators 3 Population, total from the World Development Indicators



??????

??????(?:South Georgia and The South Sandwich Islands,?:SGSSI),????????????,?????????????????56 °18?-59°30????26°-28°30???,????????????????????2, 000????????????????????????,????????310?????

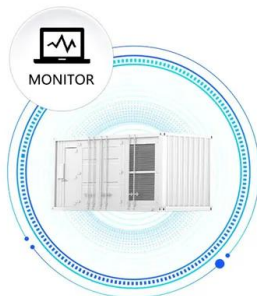


## (PDF) Humpback whale (Megaptera novaeangliae) distribution and

The South Georgia and South Sandwich Island region depicting the extent of the South Georgia and South Sandwich Islands Marine Protected Area (MPA) and Maritime Zone (MZ) in black, along with the



SUPPORT REAL-TIME ONLINE MONITORING OF SYSTEM STATUS



## Government of South Georgia & the South Sandwich Islands

Government of South Georgia & the South Sandwich Islands , 560 followers on LinkedIn. Leo Terram Propriam Protegat , As a United Kingdom Overseas Territory (UKOT), South Georgia & the South Sandwich Islands is an example of world-leading evidence-based sustainable management that has delivered globally significant environmental recovery.

## Flag: South Georgia & South Sandwich Islands

The flag for the South Georgia & South Sandwich Islands, which may show as the letters G and S on some platforms. Check out the NRSPlus Point of Sale (POS) system, and low-rate NRSPay credit

card processing from our partner, National Retail Solutions (NRS).

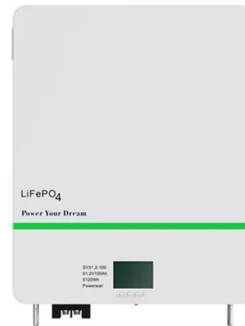


## [South Georgia and](#)

Legal system: Ordinances (primary legislation) and Orders and Regulations (secondary legislation) GDP: 0.000 USD billion (2018) Main industries: fishing, tourism. Principal exports: N/A. PDF version. South Georgia & the South ...

## [South Georgia Island Population 2024](#)

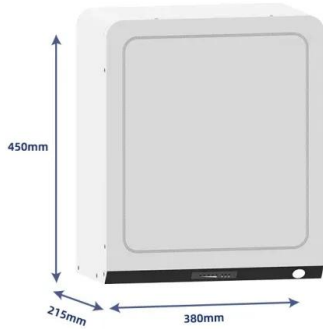
South Georgia, sometimes referred to as Isla San Pedro, is an island that is located in the South Atlantic Ocean and is part of the British administration of the South Sandwich Islands and part of the British Overseas Territory of South Georgia. The island is located 1400km from the Falkland Islands and is about 170km long and 35km wide.



## **South Georgia and the South Sandwich Islands**

Like South Georgia, the South Sandwich Islands also support globally m Height of the territorys highest peak, Mount Paget. ~60% Proportion of the territory under permanent snow/ice cover. 6 1: Natural and cultural heritage significant proportions of certain species, for example,

Antarctic fulmars (*Fulmarus glacialis*: LC)



### South Georgia and the South Sandwich Islands: Five year ...

The strategy has also been developed in conjunction with the Government of South Georgia and the South Sandwich Islands, who will also publish, on their website, their own complementary 5-year

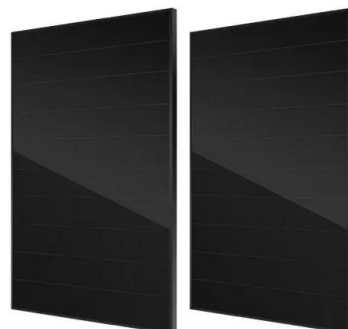


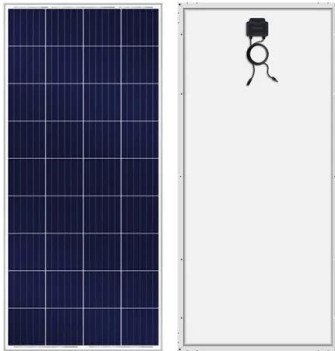
### South Georgia and South Sandwich Islands designated

The Government of South Georgia & the South Sandwich Islands (GSGSSI) announced on Tuesday the designation of the entire landmass of South Georgia & the South Sandwich Islands (SGSSI) as Specially

### Pathway to Protection for South Georgia & the South ...

The Government of South Georgia & the South Sandwich Islands (GSGSSI) announces its intention today 24 th June to designate Terrestrial Protected Areas that will cover the entire landmass of South Georgia and the South Sandwich ...



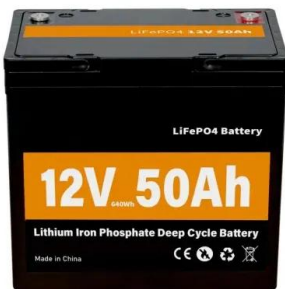


## Geology of South Georgia and the South Sandwich Islands

The island of South Georgia is unusual among oceanic islands for having pre-Cretaceous sedimentary rocks underlying much of the island and a significant portion of felsic igneous rocks. Two-thirds of the island consists of intensely folded flysch, capped with Aptian age fossils, tuff and greywacke in the Cumberland Bay Series.

## South Georgia, Antarctica & South Sandwich Islands Cruise

Summary. Welcome to our South Georgia & Antarctic Odyssey featuring the South Sandwich Islands expedition.. On this epic voyage, not only will you explore the famed white continent, discover the Falklands~Malvinas, encounter the wildlife haven in South Georgia, you will also sail to the South Sandwich Islands, a chain of seldom-visited volcanic islands located 740 km (460 ...



## South Georgia and the South Sandwich Islands

South Georgia and the South Sandwich Islands (SGSSI) is a British Overseas Territory in the southern Atlantic Ocean. It is a remote and inhospitable collection of islands, consisting of South Georgia and a chain of smaller islands known ...

## Where Are The South Georgia and the South Sandwich Islands Located

South Georgia and the South Sandwich Islands are a United Kingdom Overseas Territory located in the South Atlantic Ocean. The marine system

surrounding the islands is one of the most biodiverse ecosystems on earth leading to the creation of the 410,000 sq mi Marine Protected Area. In addition, the islands were classification as an Important



## Contact Us

---

For catalog requests, pricing, or partnerships, please visit:  
<https://www.ian-solar.co.za>