

Solar Energy South Africa

Finland ibm ess 3500



Overview

Is the IBM ESS 3500 compatible with all IBM elastic storage system models?

The IBM ESS 3500 is compatible with all IBM Elastic Storage System models. The IBM ESS 3500 can be ordered either half populated (12) or fully populated (24) NVMe drives. For more information about the IBM ESS 3500, see IBM Elastic Storage System 3500. The IBM ESS 3500 is part of the third generation of IBM ESS.

What is IBM ESS 3500 data movement?

The data movement can be used to automate and optimize data placement between IBM ESS 3500 and other storage within the IBM Spectrum Scale storage infrastructure. This appendix also provides you with the information to consider when not using the switches that IBM provides and supports for the management network.

How to create a file system with IBM ESS 3500?

The parameter “essio1” is an example name of an existing ESS I/O node in the cluster: To create a file system with IBM ESS 3500, the IBM ESS 3500 container must be running. Note: This command creates vdisk sets, NSDs, and file systems by using mmvdisk. The defaults are 4M blocksize, 80% set size, and 8+2p RAID code.

What license model does IBM ESS 3500 follow?

The IBM ESS 3500 follows the same license model as the other IBM ESS products. The two currently available options for IBM ESS are IBM Spectrum Scale for ESS Data Access Edition and IBM Spectrum Scale for ESS Data Management Edition.

Does IBM ESS 5000 have a software RAID check?

Software RAID checks are present across all IBM Spectrum Scale RAID offerings (such as IBM ESS 5000, IBM ESS 3500, and ECE). Devices (such as

IBM ESS 3500) that are integrated with IBM Spectrum Scale hardware, also get hardware checks and monitoring. For more information about how to use the mmhealth command, see mmhealth command.

What is an IBM ESS 3500 hybrid deployment model?

In an IBM ESS 3500 hybrid deployment model, the overall performance of a particular workload depends on the amount of data that is stored on NVMe disk and the amount of data stored on hard disk. The ILM toolkit can help you establish efficient data placement that achieves optimal use of the storage devices available on your system.

This IBM® Redbooks® publication introduces and describes the IBM Elastic Storage® Server 3500 (ESS 3500) as a scalable, high-performance data and file management solution. The solution is built on proven IBM ...



IBM ESS 3500 Storage Platform Targets AI Adoption Challenges

IBM ESS 3500 is engineered to help clients to accelerate data science, modernize and optimize application development, simplify and accelerate DevOps and optimize content repositories. IBM ESS 3500, enabled by Spectrum Scale, is designed to provide enterprise class security and availability with a global namespace supporting the unification of

[ESS 3500 PDFs](#)

Table 1. IBM ESS 3500 product guides; Guide name Description Links; Hardware Planning and Installation Guide: This guide provides information about ESS 3500 hardware. PDF; ESS Quick Deployment Guide: This guide provides information about deploying and upgrading ESS software quickly. PDF; ESS Deployment Guide



IBM Releases ESS 3500: New Storage Solution For ML ...

Powered by built-in Spectrum Scale software for storage management and security, with easily upgradable and expandable modular hardware, the ESS 3500 proves itself to be a simple yet powerful suite for ML ...



IBM Storage Scale - Applied Data Systems

ESS 3500 All NVMe Now Available. The Flexible Cognitive Storage Solution. IBM Storage Scale Systems are a modern implementation of software-defined storage, combining IBM Scale software with IBM POWER9® or AMD processor-based I/O-intensive servers and dual-ported storage enclosures. Applied Data Systems delivers IBM ESS fully integrated



IBM Storage Scale Software Version Recommendation Preventive ...

5 For ESS 3500 system users that are running ESS 6.1.6.0 or earlier, see the IBM ESS Alert: Simultaneous canister power cycle, missing NVMe drives and out of range sensor data in ESS 3500 5141-FN2 storage enclosures. Note 1: For a list of current advisories for all platforms supported by IBM Storage Scale,

IBM Storage Scale System Deployment Guide

Protocol virtual machine deployment on ESS 3500 I/O nodes Until ESS 6.1.2, the deployment

of protocol nodes was supported through POWER 64 LE nodes. However, from ESS 6.1.3.1, the protocol nodes deployment is moved on ESS 3500 nodes to reduce the initial deployment cost and support the protocol deployment in the ESS 3500 environment.



IBM Storage Scale System

IBM Storage Scale System is a hardware appliance to deploy IBM Storage Scale on 1000s of nodes with TB/s performance, low latency and millions of IOPs per node. IBM Storage Scale System 3500 is for customers who require an entry-level or mid-level system for less extreme product environments. It has many of the same capabilities as the



IBM ESS 3500

1000s of nodes with TB/s performance, low latency and millions of IOPs per node. IBM Storage Scale System 3500 is for customers who require an entry-level or mid-level system for less extreme product environments. It has many of the same capabilities as the



IBM Releases ESS 3500: New Storage Solution For ML Operation

The newest release in the IBM ESS line has been released. With the ESS 3500, managing data and datasets for machine learning is easier than ever. Weights & Biases IBM's new ESS 3500 is the newest iteration on the IBM Elastic Storage System lineage. This time around they have a

huge focus on making sure the workflow for AI is as smooth as

IBM Elastic Storage System Introduction Guide

The latest IBM ESS 3500 is the most innovative system that provides investment protection to Storage. x IBM Elastic Storage System Introduction Guide International Technical Support Organization ibm . IBM Elastic Storage System Introduction Guide. IBM Elastic Storage System Introduction Guide. 1



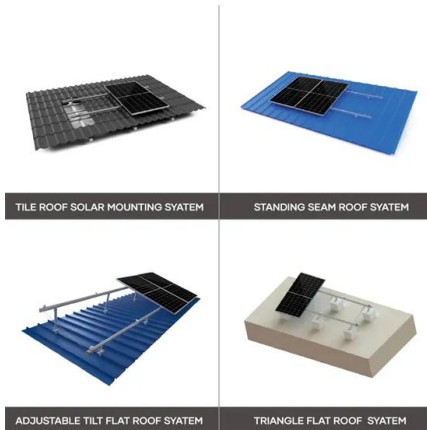
[IBM Elastic Storage System 3500](#)

Application Workloads for the ESS 3500 IBM ESS 3500 provides an extreme high-performance tier of Spectrum Scale file storage with up to 91GB/s of performance, for a broad variety of applications. The ESS 3500 is designed to keep GPUs active to solve AI problems faster and running at peak performance. Like all previous generations, IBM ESS 3500

IBM ESS Alert (HIPER): Simultaneous canister power cycle, missing ...

Enclosure management software running in BMC of each Canisters in an ESS 3500 5141-FN2 enclosure may exhibit following conditions and symptoms:
 o Enclosure management software may incorrectly detect that the 3.3V Electronic Circuit Breaker in the power supply assembly is open and reset them. In some rare condition this may lead to reset of both power supplies at the ...





Mika Heino

This IBM® Redbooks® publication introduces and describes the IBM Elastic Storage® Server 3500 (ESS 3500) as a scalable, high-performance data and file management solution. 16 others named Mika Heino in Finland are on LinkedIn See others named Mika Heino. Add new skills with these courses 4h 48m. Manage Storage in Azure 1h 2m. Google

[IBM Elastic Storage System 3500](#)

IBM Elastic Storage System (ESS) 3500 offers support for the next-gen NVIDIA ConnectX-7 IB dual-port NDR 200 Virtual Protocol Interconnect (VPI) network adapter and related network cables. ESS 3500 is also adding support for a 10TB SED option to enable key-managed SED encryption. Key requirements: The NVIDIA ConnectX-7 IB adapter (AJQS) and the



[6.2.1 IBM Storage Scale System 3500](#)

The following topics contain information about service procedures for IBM Storage Scale System 3500. IBM service support representatives and lab-based services personnel can access service information through the following link. Servicing (service personnel only) ...

[IBM Spectrum Scale](#)

IBM ESS 3500? ??? ????? ?? ??? ???????
 ???(Spectrum Scale)? ??? ??? ?? ? ??? ????
 ??? ?????? ?????? NVMe ? HDD ?????? ???? 14PB
 ??? ??? ?????.





The New IBM ESS 3500 Unlocks the Power of Data

The recently announced IBM ESS 3500 global data platform addresses these challenges, making data delivery for AI workloads faster, and allowing organizations to gain the benefit of their data efficiently. ESS 3500 brings exciting features that can help organizations overcome serious barriers to unlocking the value of distributed data.

IBM ESS Alert: Missing NVMe drives or drive paths in ESS 3500 ...

Enclosure management software running in the Baseboard Management Controller (BMC) of each canister in an ESS 3500 5141-FN2 enclosure can exhibit the following conditions and symptoms: Enclosure management software can incorrectly read the state of the NVMe drive hot plug register and can set the drive in a stuck or unallocated state from a ...



Introducing the new IBM Elastic Storage Server 3500

The Elastic Storage System (ESS) offers the simplest and fastest method for deploying a global data platform. ESS 3500 is the newest model and continues breaking barriers with industry leading performance and scalability. The ESS 3500 leverages the power of Spectrum Scale and NVMe/flash technology to deliver the ultimate high-performance storage for AI, data analytics ...

Contact Us

For catalog requests, pricing, or partnerships, please visit:
<https://www.ian-solar.co.za>