

Solar Energy South Africa

Grid connected pv Eswatini



Overview

Why is USL partnering with Eswatini's national grid?

USL's connection to Eswatini's national grid now contributes 31% of local grid-electricity production, pivotal in the country's impressive 32% point increase in electricity access between 2011 and 2021. To electrify the whole population, Eswatini initiated the Partnership for Affordable Renewable Energy in Swaziland (PARES) in 2018.

Are solar panels a viable source of electricity in Eswatini?

Photovoltaic (PV) solar cells are increasingly prominent sources of small-scale electricity production in Eswatini. The government actively encourages the adoption of solar panels in residential and commercial buildings to provide both electricity and water heating.

What is the main energy source in Eswatini?

Hydroelectric power currently stands as one of the most prominent energy sources in Eswatini. The EEC operates four hydropower plants, constituting 15% of the country's electricity production and plans to bolster the existing infrastructure.

What does Eswatini's COP26 pledge mean for Swazi energy?

The transformative journey culminated at the COP26 conference, where Eswatini committed to an ambitious 50% surge in renewable energy production by 2030. This pledge signifies a crucial step toward Swazi energy independence, bridging the stark urban-rural economic divide and promising new employment and educational opportunities.

Can a wind turbine be installed in Eswatini?

While wind energy production in Eswatini is negligible, the country's mountainous regions hold immense potential for installing wind turbines. Government feasibility studies in the Lubombo Plateau, a largely uninhabited

and undeveloped region near the border with Mozambique, are ongoing.

Why is hydroelectric power important in Eswatini?

Projects such as these conserve millions of liters of fuel throughout their lifetime and ensure year-round reliable and sustainable electrification for public facilities. Hydroelectric power currently stands as one of the most prominent energy sources in Eswatini.

Grid connected pv Eswatini



Outdoor Cabinet BESS
 50 kWh/500 kWh Battery Storage System
 Industrial and Commercial Energy Storage

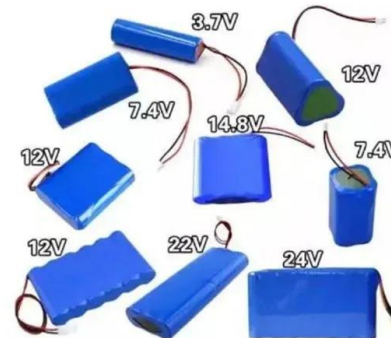
- All in One**
Integrating battery packs
- High-capacity**
50-500kWh
- Degree of Protection**
IP54
- Operating Temperature Range**
-20-60°C (Derating above 50 °C)
- Intelligent Integration**
Integrated photovoltaic storage cabinet
- Rated AC Power**
50-100kW
- Altitude**
3000m(>3000m derating)

Grid-connected photovoltaic inverters: Grid codes, topologies and

Grid-connected PV inverters have traditionally been thought as active power sources with an emphasis on maximizing power extraction from the PV modules. While maximizing power transfer remains a top priority, utility grid stability is now widely acknowledged to benefit from several auxiliary services that grid-connected PV inverters may offer

MPPT efficiency enhancement of a grid connected solar PV ...

In this research paper, a MPPT model predictive control strategy for a grid-connected PV system is presented. Model predictive control (MPC) was used to develop and model the AC load energy tracking efficiency for the PV systems with a power rate of 20 kW at standard test conditions. For the purpose of obtaining the power tracking performance



Eswatini Investment Case for Sustainable Energy in Health

...

facilities and education institutions in Eswatini with solar PV systems. This report is based on analysis of key data collected between November and December 2022 for whereby all facilities, including grid-connected facilities, are solarised. This is viable given Eswatini's current state of electricity supply: The majority of

GRID-CONNECTED PV SYSTEMS

7 , Design Guideline for Grid Connected PV Systems Prior to designing any Grid Connected PV system a designer shall visit the site and undertake/determine/obtain the following: 1. The reason why the client wants a grid connected PV system. 2. Discuss energy efficiency initiatives that could be implemented by the site owner. These could include: i.



Solar PV Analysis of Mbabane, Eswatini

Solar output per kW of installed solar PV by season in Mbabane. Seasonal solar PV output for Latitude: -26.3152, Longitude: 31.1326 (Mbabane, Eswatini), based on our analysis of 8760 hourly intervals of solar and meteorological data (one whole year) retrieved for that set of coordinates/location from NASA POWER (The Prediction of Worldwide Energy Resources) API:

(PDF) Grid-connected photovoltaic power systems: Technical and

Alberto FI, Javier C, Jose LBA. Design of grid connected PV systems considering electrical, economical and environmental aspects: a practical case. Renewable Energy 2006;31:2042-62. [54] Francesco GROPPi, Grid-connected photovoltaic power systems: power value and capacity value of PV systems, Report IEA PVPS T5-11; 2002. [55]



Eswatini , Africa Energy Portal



The existing licensing framework developed by ESERA covers only grid-connected systems and provides procedures and guidelines for application, approval process, schedule of license fees. An assessment of the RE potential of Eswatini has been conducted and the Energy Master Plan 2034 and Short Term Generation Plan 2018-2023 specifically

Hybrid global flexible power point tracking algorithm for photovoltaic

Frequency support in grid-connected photovoltaic systems is achieved by employing flexible power point tracking (FPPT) algorithms. Subsequently, according to the grid frequency requirements, the PV power is curtailed to a power reference, unlike the traditional method of operating the PV at the maximum power point. In practical cases, the PV



REQUIREMENTS FOR EMBEDDED GENERATION ...

A generation configuration, typically solar PV, which includes battery storage and where the system can operate in grid-tied mode as well as independently of the grid - for example during loadshedding or a grid outage.

Grid-Connected Solar Photovoltaic (PV) System

Most PV systems are grid-tied systems that work in conjunction with the power supplied by the electric company. A grid-tied solar system has a special inverter that can receive power from the

grid or send grid-quality AC power to the utility grid when there is an excess of energy from the solar system.. Figure. Grid-Connected Solar PV System Block Diagram

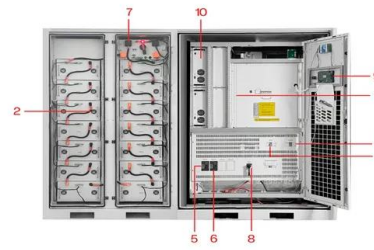


[Eswatini awards PV contract](#)

Eswatini awards PV contract. Eswatini awards PV contract. 26 Apr 2021. Share. Facebook; Twitter; in the Hhohho region, and connected to the existing Eswatini Electricity Company (EEC) transmission system. T& D Africa to explore AI and telecom in grid management. 10 Dec 2024. LNG shipping rates plunge by 49% in a month.

Invitation to Tender: EERA Seeks Developers to Support AMP Eswatini

Eswatini Energy Regulatory Authority is seeking private developers to design, construct, operate and maintain a solar PV battery minigrid. The project is focused on the productive use of energy as an anchor off-taker of electricity that enables household electrification at Bulimeni Community in the Shiselweni Region. Eswatini currently has



- 1 PCS Module
- 2 Battery room
- 3 Grid side circuit breaker
- 4 Load side circuit breaker
- 5 OPV1 side circuit breaker
- 6 OPV2 side circuit breaker
- 7 High Volt.Box
- 8 BAT side circuit breaker
- 9 LCD display screen
- 10 MPPT

Rural Electrification -- Electricity , Eswatini Electricity

...

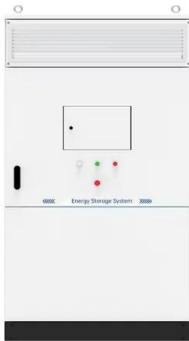
The Project is a stand-alone mini-grid which consists of a centralised 35kW solar PV



generation plant complete with 200kWh battery storages system and an AC LV reticulation network designed to service about 26 rural homesteads through ...

Policy Is Promoting a Revolution of Renewable ...

USL's connection to Eswatini's national grid now contributes 31% of local grid-electricity production, pivotal in the country's impressive 32% point increase in electricity access between 2011 and 2021. To electrify the ...

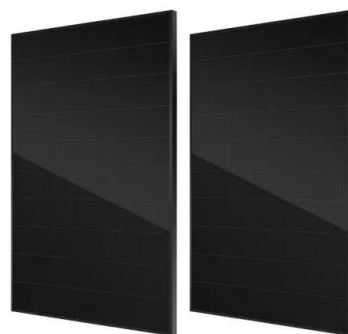


Eswatini Investment Case for Sustainable Energy in Health ...

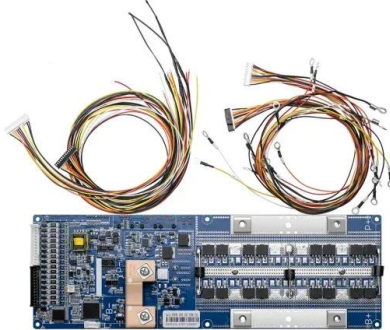
We further considered a second scenario, whereby all facilities, including grid-connected facilities, are solarised. This is viable given Eswatini's current state of electricity supply: The majority of ...

Top Solar Panel Distributors Suppliers in Eswatini (fmr. "Swaziland")

Solar Panel used for below projects in Eswatini (fmr. "Swaziland") No Projects Found. financed, engineered, constructed, and operated many of the world's largest grid-connected PV power plants. Global Solar Energy. Founded in 1996, Global Solar Energy has evolved into a leading



manufacturer of thin-film Copper Indium Gallium diSelenide



Viability of the store-on Grid Scheme model for grid-tied rooftop ...

The results showed that the LCOE of the off-grid and grid-connected configurations are \$0.101/kWh and \$0.046/kWh, respectively. The NPC of the off-grid and grid-connected configurations are

[Eswatini kicks off minigrid tender](#)

The Bulimeni Solar PV-Battery minigrid project will enable household electrification of the Bulimeni community, which features 92 households, located in the Shiselweni region of southern Eswatini. The chosen developer will be expected to operate and maintain the minigrid for 20 years and be responsible for providing a minimum 55% of the capital



Eswatini issues greenfield mini-grid tender , News , IJGlobal

The Eswatini Energy Regulatory Authority has invited bids for the DBOM of the greenfield Bulimeni solar PV-battery mini-grid system as part of its Africa Minigrids Program Eswatini Lorem ipsum dolor sit amet, consectetur adipiscing elit.

[Grid-connected PV system , PPT](#)

This document analyzes a grid-connected photovoltaic (PV) system. It discusses modeling

different components of the system like the PV module, DC-DC converter, maximum power point tracker, DC-AC inverter, and phase locked loop for grid synchronization in MATLAB/Simulink. Simulation results show the power flow and transformer loading.



Grid Connected PV System: Components, ...

Price Of A Grid Connected PV System . A 1 KW grid-connected PV system can cost anywhere between Rs. 45,000 to Rs. 60,000. The price heavily depends on the panel chosen, the cost of the inverter, the features of ...

[Edwaleni Solar Power Station](#)

Edwaleni Solar Power Station, is a 100 megawatts solar power plant under construction in Eswatini. The solar farm is under development by Frazium Energy, a subsidiary of the Frazer Solar Group, an Australian-German conglomerate. The solar component is complemented by a battery energy storage system, expected to be the largest in Africa. The energy off-taker is Eswatini ...



[Eswatini calls for mini-grid developers](#)

The Eswatini Energy Regulatory Authority has invited mini-grid developers to express interest in the design, construction, operation and maintenance of the Bulimeni solar photovoltaic-battery mini-grids project. The Bulimeni community of the Shiselweni region, comprising

92 households with 60 designated to receive mini-grid power, has been chosen ...

Contact Us

For catalog requests, pricing, or partnerships, please visit:

<https://www.ian-solar.co.za>