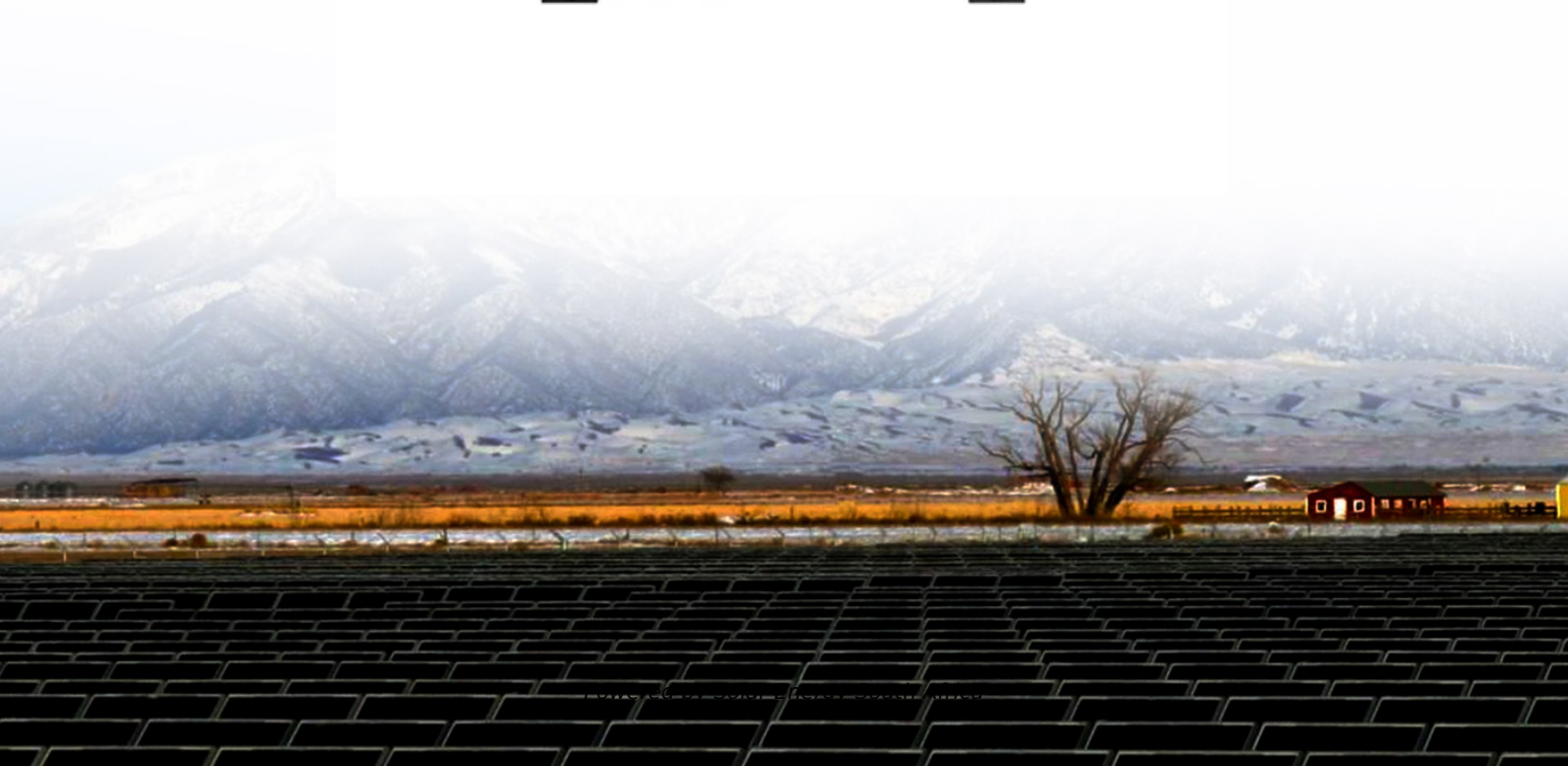


Solar Energy South Africa

Heard and McDonald Islands east west solar panels



Overview

Should solar panels face south or east-west?

As we all know, the yield per modules is at its best when the module is facing South. However, since the pitch of the solar panels in flat roof mounting systems is relatively low (10° - 12°), the non optimal azimuth of East-West systems are more than compensated by other benefits. Win for East-West. 22.5% more yield/m².

Why are east-west solar panels becoming an industry trend?

Basically, the reason why solar arrays that are situated east-west are becoming an industry trend rapidly is because these structures can squeeze in more rows and panels, and therefore a greater generation capacity than their south-north facing cousins (in terms of the project surface, not generation capacity per module).

Where are Heard Island and McDonald Islands located?

Heard Island and McDonald Islands (HIMI) are a remote subantarctic island group located about 4,000 km south-west of Western Australia and approximately 1,700 km from the Antarctic continent. The HIMI exclusive economic zone (EEZ) abuts the French EEZ around the Kerguelen Islands.

Are east-west solar arrays worth it?

Additionally, while east-west solar arrays may have a reduced total output (15% less according to Sheffield Solar), the value of the electricity they produce is inherently higher in most markets.

Will east-west solar farms help grid operators balance supply and demand?

Another key consideration to take into account in the analysis of future deployment of this technology is grid instability. This current of thought is driven by industry experts who argue that utility-scale east-west solar farms, with their flatter power curves, will help grid operators balance supply and

demand.

Heard and McDonald Islands east west solar panels

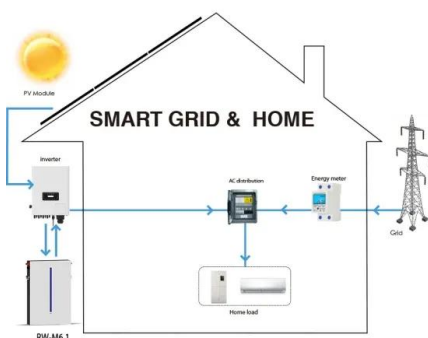


Home

Zeerust Solar is one of South Africa's newest solar projects, helping to put the North West Province firmly on the country's clean power map. With over 250 000 solar modules harnessing the intense power of the sun, this 75MW solar project supplies South Africa with 180 000 MWh/year of much-needed green energy and benefits the local [...]

HEARD ISLAND AND THE McDONALD ISLANDS: A ...

basaltic islands about 54 km west of Heard Island. The area was accepted in 1997 for inscription on the World Heritage List based on its geologically unique features. This paper summarises the known geological evolution and significance of Heard Island and the McDonald Islands as a background to other studies on the biology, environ



[McDonald Island Map](#)

McDonald Island is an island in Heard Island and McDonald Islands. Mapcarta, the open map. Islands. Heard Island and McDonald Islands. McDonald Island 44 km east; West Cape Locality, 47 km east; Laurens Peninsula Locality, 48 km east; Landmarks in the Area. McDonald Island Volcano Volcano;

[Heard and McDonald Islands](#)

Heard Island and McDonald Islands are located in the Southern Ocean, approximately 1,700 km from the Antarctic continent and 4,100 km south-west of Perth. As the only volcanically active subantarctic islands they 'open a window into the earth', thus providing the opportunity to observe ongoing geomorphic

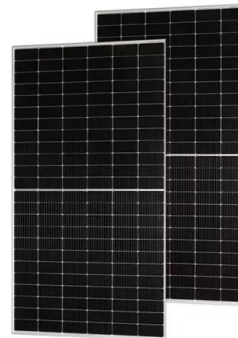


Should i face my panels south? or east and west? : r/solar

Ground mount, 2 runs of 13 panels. shouldn't be any shading, pretty good view from East all the way to west I'm in Norcal, PGE and will be on NEM3.0 which pretty much sucks from what i understand. I dont know if it matters, but i think i was able to figure out my average hourly usage over the last 5 months (before that i was growing weed so the

Regional circulation around Heard and McDonald Islands and ...

The fine-scale circulation around the Heard and McDonald Islands and through the Fawn Trough, Kerguelen Plateau, is described using data from three high-resolution CTD sections, Argo floats and satellite maps of chlorophyll a, sea surface temperature (SST) and absolute sea surface height (SSH). We confirm that the Polar Front (PF) is split into two ...



Current Local Time in Heard Island, Heard and McDonald Islands...

12.8V 100Ah



Current local time in Australia - Heard and McDonald Islands - Heard Island. Get Heard Island's weather and area codes, time zone and DST. Explore Heard Island's sunrise and sunset, moonrise and moonset.

Location and geography - Heard Island and McDonald Islands

The subantarctic island group of Heard Island and McDonald Islands (HIMI) is located in the southwest Indian Ocean at about 53°S, 73°30'E. The islands are around 4,100 kilometres southwest of Perth, Western Australia, 4,700 kilometres southeast of Africa and 1,000 kilometres north of Antarctica.



Heard and McDonald Islands , Mad Traveller

Heard and McDonald Islands: A Comprehensive Guide for Tourists Table of Contents Introduction Geography and History 2.1 Heard Island 2.2 McDonald Islands Climate and Wildlife Travel Information 4.1 How to Get There 4.2 When to Visit 4.3 What to Pack Things to Do and See Safety and Regulations Tips for Responsible Travel Useful Resources 1. Introduction ...

[Heard Island and McDonald Islands](#)

Heard Island and McDonald Islands in the Southern Ocean A map of Heard Island and

McDonald Islands. Heard Island, by far the largest of the group, is a 368-square-kilometre (142 sq mi) mountainous island covered by 41 glaciers [21] (the island is 80% covered with ice [1]) and dominated by the Big Ben massif has a maximum elevation of 2,745 metres (9,006 ft) at ...



[Heard Island and McDonald Islands](#)

The Territory of Heard Island and McDonald Islands (HIMI; ISO 3166 region code: HMD, HM, 334;) is an Australian external territory comprising a volcanic group of mostly barren Antarctic islands, about two-thirds of the way from Madagascar to Antarctica. The group's overall land area is 372 km² (144

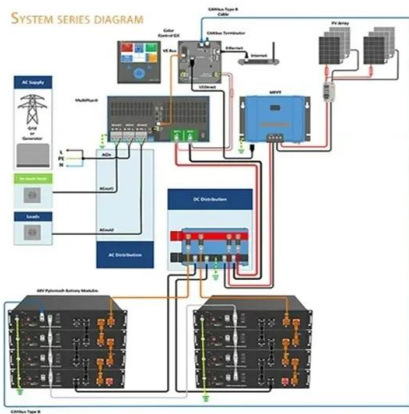
Heard and McDonald Islands , World Heritage Outlook

Heard Island and McDonald Islands are located in the Southern Ocean, approximately 1,700 km from the Antarctic continent and 4,100 km south-west of Perth. but with significant non-native species on Iles Kerguelen to the north west, natural processes, such as bird migration, may adversely affect the values through transportation of these non



[Heard Island and McDonald Islands](#)

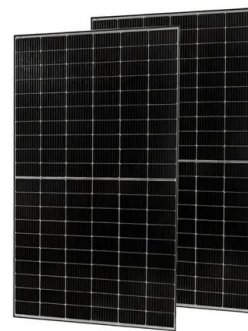
Heard Island and McDonald Islands are uninhabited, barren, Subantarctic islands in the Southern Ocean, 73.5205° or 73° 31' 14" east. Area. 412 km² (159 miles²) Elevation. 1,634



metres (5,361 feet) Currency. Dollar (AUD) Phone code.hm. Internet domain. United Nations Location Code.

One small solar panel started big East Coast dreams for energy ...

A clean energy revolution in a Prince Edward Island First Nation was started by one small solar panel system atop the community's school. It was the nation's only claim to renewable energy in



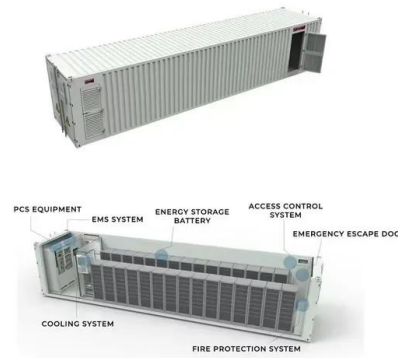
Can I put Solar Panels on East and West Facing Roof?

According to a solar panel calculator by Energy Efficiency Ireland, the annual energy production per panel for an east-west facing panel is approximately 316 kWh, with a 15% reduction due to the orientation of the panels. The annual monetary production per panel is approximately EUR103.75, also with a 15% reduction.

[Heard Island and McDonald Islands](#)

43 kilometres west of Heard Island. Heard Island is 368 square kilometres in area. Following significant subsea volcanic activity, McDonald Island is now approximately three square kilometres in area. The Reserve is some 71,000

square kilometres in area. Governance and people The Territory of Heard Island and McDonald Islands



Proposal to expand Heard Island and McDonald Islands ...

Australia's external Territory of Heard Island and McDonald Islands (HIMI) consists of a remote group of sub-Antarctic islands in the Indian Ocean sector of the Southern Ocean (Figure 1). The marine ecology around HIMI is known to vary from the east to west due to the variation in benthic habitats and the influence of currents (Welsford

Heard and McDonald Islands

Svalbard East Greenland West Greenland Northwest Passage The North Pole Asia Pacific Coral Triangle Easter Island West Papua & Indonesia this Australian external territory comprises mainly two volcanic islands, Heard Island and the McDonald Islands, featuring stark volcanic landscapes, glaciers, and the highest mountain in Australian



Submarine sedimentary bedforms and benthos surrounding the Heard ...

Heard and McDonald Islands (HIMI) are volcanically active sub-Antarctic islands in the southern Indian Ocean (Fig. 42.1) 1997 HIMI



were inscribed on the World Heritage List as they demonstrate outstanding examples of active geological and glacial processes, and provide crucial habitat for many unique flora and fauna. The site is of global importance as it is ...

Heard Island and McDonald Islands facts for kids

The Territory of Heard Island and McDonald Islands (HIMI) is an Australian external territory comprising a volcanic group of mostly barren Antarctic islands, about two-thirds of the way from Madagascar to Antarctica. The group's overall size is 372 km² (144 sq mi) in area and it has 101.9 km (63 mi) of coastline. Discovered in the mid-19th century, the islands lie on ...



Home

Bokamoso Solar PV, produces enough clean, renewable power each year to electrify approximately 73 000 medium-sized South African homes. This North West Province solar facility, is helping the country transition to a less carbon intense energy mix, whilst also benefiting local its communities through its flagship economic development programmes that build social resistance.

??????????

??????????(Heard Island and McDonald Islands?HI MI),??????????,???1600??????????1947??????????
 ???????????,??????????,??????????,??????????,?????
 ??????????? ...



Solar performance if you split your array between east and west

I have 10 East, 10 West and 5 south (my roof was too small for more). Last year my East panels averaged about 5.8 kWh, West panels just a bit less about 5.6 kWh and my south panels were 8.15 kWh. I am located in SWFL and the afternoons in the summer get overcast with rain, to me that explains why the West panels are slightly less productive.

Contact Us

For catalog requests, pricing, or partnerships, please visit:
<https://www.ian-solar.co.za>