

Solar Energy South Africa

Heard and McDonald Islands solar components



Overview

The Territory of Heard Island and McDonald Islands (HIMI; region code: HMD, HM, 334;) is an Australian comprising a of mostly barren islands, about two-thirds of the way from to . The group's overall land area is 372 km (144 sq mi) and it has 101.9 km (63 mi) of coastline. Discovered in the mid-19th century, t.

What is the significance of Heard Island & McDonald Islands?

Heard Island and the McDonald Islands, with the Kerguelen Islands, are exposed parts of the Kerguelen Plateau, possibly the largest submarine plateau on earth, and provide geochemical and isotopic insights into the formation of oceanic plateaux, mantle plume development and the separation of Australia, India and Africa from Antarctica.

How big is Heard Island & McDonald Islands?

The group's overall land area is 372 km² (144 sq mi) and it has 101.9 km (63 mi) of coastline. Discovered in the mid-19th century, the islands lie on the Kerguelen Plateau in the Indian Ocean and have been an Australian territory since 1947. Heard Island and McDonald Islands contain Australia's only two active volcanoes.

Where are Heard Island and McDonald Islands located?

The islands are a territory (Territory of Heard Island and McDonald Islands) of Australia administered from Hobart by the Australian Antarctic Division of the Australian Department of Climate Change, Energy, the Environment and Water.

Does Heard Island have a harbour?

Heard Island and the McDonald Islands have no ports or harbours; ships must anchor offshore. The coastline is 101.9 km (63.3 mi) in extent, and a 12 nmi (22 km) territorial sea and 200 nmi (370 km) exclusive fishing zone are claimed. [2].

Is Heard Island a subantarctic island?

The fauna of the freshwater pools, lakes, streams and mires found in the coastal areas of Heard Island are broadly similar to those on other subantarctic islands of the southern Indian Ocean. Many species reported from Heard Island are found elsewhere.

Where are the McDonald Islands located?

The much smaller and rocky McDonald Islands are located 44 kilometres (27 mi) to the west of Heard Island. They consist of McDonald Island (186 m or 610 ft high), Flat Island (55 m or 180 ft high) and Meyer Rock (170 m or 560 ft high).

[Heard Island and McDonald Islands](#)

Mawson Peak on Heard Island is the highest Australian mountain (at 2,745 meters, it is taller than Mt. Kosciuszko in Australia proper), and one of only two active volcanoes located in Australian territory, the other being McDonald Island; in 1992, McDonald Island broke its dormancy and began erupting; it has erupted several times since, most



[Heard and McDonald Islands](#)

Heard and McDonald Islands. Heard Island and McDonald Islands are located in the Southern Ocean, approximately 1,700 km from the Antarctic continent and 4,100 km south-west of Perth. As the only volcanically active subantarctic islands they 'open a window into the earth', thus providing the opportunity to observe ongoing geomorphic

Heard and Mcdonald Islands , Mad Traveller

Heard and McDonald Islands: A Comprehensive Guide for Tourists Table of Contents Introduction Geography and History 2.1 Heard Island 2.2 McDonald Islands Climate and Wildlife Travel Information 4.1 How to Get There 4.2 When to Visit 4.3 What to Pack Things to Do and See Safety and Regulations Tips for Responsible Travel Useful Resources 1. Introduction ...



[Heard Island and McDonald Islands](#)

The Territory of Heard Island and McDonald Islands (HIMI; ISO 3166 region code: HMD, HM, 334;) is an Australian external territory



comprising a volcanic group of mostly barren Antarctic islands, about two-thirds of the way from Madagascar to Antarctica. The group's overall land area is 372 km² (144

[\(PDF\) Heard Island and McDonald Islands](#)

7 Papers and Proceedings of the Royal Society of Tasmania, Volume 141 (1), 2007 HEARD ISLAND AND MCDONALD ISLANDS by Ewan Mcivor (with two text-figures) Mcivor, E. 2007 (23:xi): Heard Island and McDonald Islands. with low-growing herbaceous flowering plants and bryophytes comprising the major components of the vegetation. Substantial



[Îles Heard-et-MacDonald -- Wikipédia](#)

Les îles Heard-et-MacDonald, en anglais Heard and McDonald Islands et Territory of Heard Island and McDonald Islands [1], sont un territoire extérieur de l'Australie situé dans le sud de l'océan Indien, sur la plaque antarctique. Il est constitué d'un petit archipel, les îles McDonald, ainsi que d'une île isolée, l'île Heard. Situé à 422 km au sud-sud-est des îles Kerguelen, à 1 ...

[Isole Heard e McDonald](#)

L'isola Heard e le isole McDonald sono isole disabitate che si trovano nell'Oceano Antartico, a circa due terzi di distanza tra il Madagascar e l'Antartide. Esse costituiscono un territorio

esterno australiano dal 1947 e contengono i due soli vulcani attivi presenti sul territorio australiano, uno dei quali (Mawson Peak) è anche la montagna australiana più elevata, con 2.745 metri.



Ilha Heard e Ilhas McDonald - Wikipédia, a enciclopédia livre

A Ilha Heard e as Ilhas McDonald (nome oficial: Território das Ilhas Heard e McDonald), [1] [2] [3] é um território externo australiano que compreende um grupo vulcânico de ilhas antárticas inóspitas e desabitadas, localizadas no oceano Índico, a cerca de dois terços do caminho de Madagáscar para a Antártida. A área total do grupo é de 372 km² e tem 101,9 km de litoral.

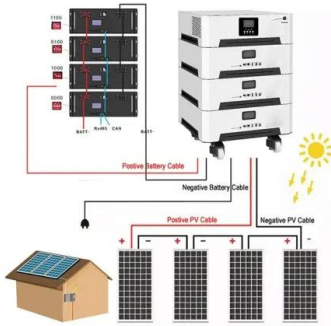
??????????

??????????(?: Heard Island and McDonald Islands,?:HIMI),??????????,1947??????
 ????,1997????????????(?????????)? ??????1600??????
 ???;????????????1000????????????,?????3700????????



Heard

Satellitbild av sydspetsen av Heard Island. Kap Arkona ses på vänster sida av bilden, med Lied Glacier strax ovanför och Gotley Glacier strax nedanför. Big Ben Volcano och Mawson Peak ses längst ned till höger på bilden. Heard- och McDonaldöarna, Heard and McDonald Islands, är en obedd australisk ögrupp i södra Indiska



oceanen.

Heard And Mcdonald Islands Facts: That Will Leave You Surprised

The Heard and McDonald Islands are interesting from a historical perspective because they are one of the few places in the world where two claim lines intersect. So it's fantastic for penguins, sea birds, and seals, but not so much for humans. The principal vegetation components on these islands are a variety of low-growing herbaceous



Heard Island and McDonald Islands - Travel guide at Wikivoyage

Heard Island and McDonald Islands are uninhabited, barren, Subantarctic islands in the Southern Ocean, far due south of India and roughly 400 km southeast of Kerguelen of the French Southern and Antarctic Lands. The islands are administered by Australia and listed as a UNESCO World Heritage site. Although it's administered by Australia, the islands are approximately 4,000 ...

Shallow Seafloor Gas emissions Near Heard and

McDonald Islands ...

Solar Systems Objects; Solid Surface Planets ; Policy and Funding seafloor gas emissions are both poorly mapped and poorly constrained. Heard Island and McDonald hydrothermal gas is usually dominated by CO₂ due to degassing slab or magma, with abiotic CH₄, H₂S, and H₂ also important components (Dando, 2010). In areas of shallow CO



[Heard Island and McDonald Islands](#)

Heard Island and McDonald Islands. Antarctica. Page last updated: November 27, 2024. Photos of Heard Island and McDonald Islands. view 3 photos. Country Flag. View Details. Country Map. View Details. Locator Map. View Details. Contents. Introduction. Geography. People and Society

[Heard Island and McDonald Islands](#)

Commonwealth of Australia since 1953. The Heard Island and McDonald Islands Act 1953 provides the legislative basis for the Territory's administration. Administration of the Territory is the responsibility of the Australian Government department that administers the Heard Island and McDonald Islands Act 1953. This responsibility has



[HEARD ISLAND AND MCDONALD ISLANDS](#)

FIG. 1 - Heard Island and McDonald Islands Marine Reserve boundaries. A N legend Refuge Artefact Bird nesting sites or small colonies (" 1000 nests | pairs) Seal breeding or haulout sites



comprising the major components of the vegetation. Substantial vegetation covers almost 20 km² of Heard Island, mostly in coastal areas at elevations

Heard and McDonald Islands

Heard Island and McDonald Islands are located in the Southern Ocean, approximately 1,700 km from the Antarctic continent and 4,100 km south-west of Perth. As the only volcanically active subantarctic islands they 'open a window into the earth', thus providing the opportunity to observe ongoing geomorphic



Heard Island and McDonald Islands

Heard Island and McDonald Islands in the Southern Ocean A map of Heard Island and McDonald Islands. Heard Island, by far the largest of the group, is a 368-square-kilometre (142 sq mi) mountainous island covered by 41 glaciers [21] (the island is 80% covered with ice [1]) and dominated by the Big Ben massif has a maximum elevation of 2,745 metres (9,006 ft) at ...

Heard and McDonald Islands, Australia , SpringerLink

Heard Island is 43 km long and 21 km wide. McDonald Islands are a group of uninhabited rocky islets, 40 km west of Heard Island (Encyclopaedia Britannica 2006). Heard Island

has approximately 362.5 km² of area and the McDonald Island, 2.6 km². The site includes the adjacent offshore rocks and shoals and all territorial waters to a distance of 12 nautical ...



???????????

??????????(?:Heard Island and McDonald Islands,?:HIMI),??????????,1947????????????,1997???????? (?????????)?HIMI???1600??????????

Heard and McDonald Islands

Located in the Southern Ocean, this Australian external territory comprises mainly two volcanic islands, Heard Island and the McDonald Islands, featuring stark volcanic landscapes, glaciers, and the highest mountain in Australian territory, Mawson Peak. Significance.



Our Lifepo4 batteries can be connected in parallels and in series for larger capacity and voltage.



?????? ???? ? ??????? ???????????
-- ???????????

?????? ???? ? ??????? ??????????? (?????. Heard Island and McDonald Islands, ??????????? HIMI) --
?????????? ????????????? [1] ??????????? ? ??????? ??????
???????????? ??????? ??????????? ?? ????? ??????????
?????????? -- ????? ? ?????????????, ? ??????? ??

Contact Us

For catalog requests, pricing, or partnerships, please visit:
<https://www.ian-solar.co.za>