

## Solar Energy South Africa

# How far apart should the photovoltaic panels be to install expansion screws



Voltage range: 691.2-947.2V

>6000 cycles (100%DOD)

Rated battery capacity:  
216KWH (customizable)

EMS communication:  
4G/CAN/RS485

## Overview

---

It is best to leave four to seven inches of space between two solar panels. Again, this accommodates the solar panels' expansion and contraction during the day. How much gap should be between solar panels?

The gap between the last row of solar panels and the roof's edge should be a minimum of 12 inches or one foot. This ensures the panels are accommodated as they expand and contract during the day. See also: [Mounting Solar Panels: A Complete Beginner's Guide to Installation How Much Gap Should Be Between Two Solar Panels?](#)

.

How far apart should solar panels be?

The distance between two rows of solar panels should be five to six inches. This is how far apart should solar panels be. It is also recommended that you leave 1 to 3 feet of space between every second or third row. This space is necessary for maintenance workers to have enough room to get on the roof and make repairs whenever necessary.

What is the gap between solar panels & roof?

Talking about the gap between solar panels and the roof, the distance between the last row of solar panels and the edge of the roof should be a minimum of 12 inches. This ensures the panels have enough space as they expand and contract during the day. [How Much Gap Should be Between Solar Panel Rows?](#)

.

How much space do PV panels need?

On the average roof, the space for your rafters is equal to 16 inches. The standoffs have a 48-inch space between each of the posts. This means that if you decide to install four PV modules that each measure 65 x 39 inches, the

total dimension equals 160 inches. So, if your rail is 160 inches long or more, you'll have enough room for your panels.

How long does it take to install a solar PV system?

Installing solar PV systems is fairly disruption-free and most systems are installed in two or three days. Unless your building is single storey, you'll need to have scaffolding put up.

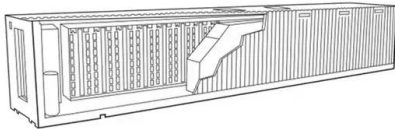
How do solar panels attach to a roof?

Installers fix solar panels to a roof by lifting up some roof tiles and attaching mounting brackets to the rafters, before carefully placing the tiles back where they were. They'll then attach rails to these brackets, before locking solar panels into the rails.

## How far apart should the photovoltaic panels be to install expansion

---

### [How to Mount a Solar Panel at Home](#)



What is the cost of installation of solar panels? The cost of installing solar panels varies from company to company, but typically, they charge a combination of labor costs and the price of panels per watt. In general, the installation costs ...

### How are solar panels installed? , 11 steps explained

A solar panel installation usually takes between one and three days. If the job is more complex, for instance if the roof is hard to access, it can take another day or two. After this point, a good installer like Sunsava will ...



### Solar Panel Spacing Gaps (Why They Are Important)

Talking about the gap between solar panels and the roof, the distance between the last row of solar panels and the edge of the roof should be a minimum of 12 inches. This ensures the panels have enough space as they ...

### Rooftop solar mounting: Lag in these structural areas ...

Improper installation of 5/16 in. diameter lag screws into a framing element. One of the items

covered in the report indicated that residential failures of the PV panels occurred at the connections to the racking ...

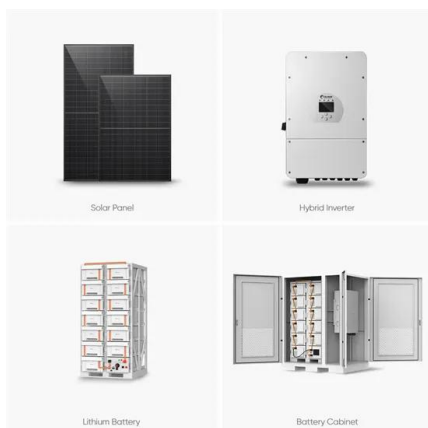


## The Importance of Solar Panel Spacing

The ideal spacing between solar panels, or row spacing, depends on various factors such as panel dimensions, shading considerations, and system design. Generally, leaving a gap of approximately 0.5 times the width of a solar ...

## What is the Screw Pattern for Drywall? And Why It's ...

Screws can be placed as close as 12 inches apart, but it is not very common to place them closer than that within the field area. For horizontal placements on ceiling joists, many more screws will be necessary. There is far ...



## PV on a flat roof, how far from the edge?

I'm trying to get a new PV system installed, on a flat roof. I'm about to apply for planning permission, but can't find any solid info online about restrictions in terms of how far from the edge the panels must be.

## Contact Us

---

For catalog requests, pricing, or partnerships, please visit:  
<https://www.ian-solar.co.za>