

## Solar Energy South Africa

# How heavy is each photovoltaic solar panel



## Overview

---

How much do solar panels weigh?

Most of the solar panels available on the market, consisting of 60 cells per panel, weigh about 40 pounds (18 kilograms). However, some solar panels can weigh up to 50 pounds (22.6 kilograms), but these are usually produced for the commercial sector rather than for households.

How much does a 60 cell solar panel weigh?

Every brand of solar panels has slight variations in their dimensions and weights, according to manufacturing material. Although the weight of different brands of solar panels varies, an average 60 cell solar panel weighs about 40 pounds. Other important factors are wattage and voltage/current requirements.

How much do solar panels weigh on a roof?

It is also important to consider the weight of installing solar panels on your rooftop. On average, mounting equipment and solar panels weigh two to four pounds per square foot. "In terms of weight, it has little impact on your roof, as it's built to support much heavier infrastructure.

How big are solar panels?

Residential solar panels consist of around 60 solar cells and are roughly 5.5 feet long and 3 feet wide. Solar panels usually weigh about 40 to 50 pounds. Commercial solar panels are generally larger than residential solar panels at 6.5 feet by 3 feet.

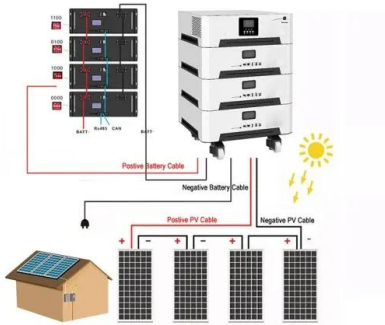
How much does A 72-cell solar panel weigh?

72-cell solar panels weigh around 61.73 pounds. As you may recall, these larger panels usually provide 350 to 400 watts. The weight of a solar panel per unit is an important consideration when deciding which size is best for your home, which we will discuss further in a later section.

How much does a polycrystalline solar panel weigh?

They weigh around 30-40 pounds (13-18 kilograms). Polycrystalline panels are cheaper than monocrystalline panels, but they are not as energy efficient. They usually weigh around 42 pounds (20 kilograms). The cheapest option are amorphous (thin-film) panels.

## How heavy is each photovoltaic solar panel



### Standard Solar Panel Sizes And Wattages (100W-500W Dimensions)

72-cell solar panel size. The dimensions of 72-cell solar panels are as follows: 77 inches long, and 39 inches wide. That's a 77x39 solar panel; basically, a longer panel, mostly used for ...

### Guide to Solar Panel Sizes & Dimensions (November ...

Solar panel size refers to the total amount of power a solar panel can generate over a period of time; Solar panel dimensions refers to the physical size of a solar panel; Solar panel sizes and wattage range from 250W ...



### What Is the Average Weight of Residential Solar Panels?

On the other hand, commercial PV modules are relatively larger, with each panel measuring about 78 x 39 inches or 6.5 ft. by 3.25 ft. Being sizable, they contain 72 solar cells per panel. You can calculate the amount ...

### Solar Panel Size & Weight: The Ultimate Guide 2024

Three Common Types of Solar Panels: Size and Weight. Understanding common solar panel sizes is key. The 60-cell and 72-cell panels are

standard for residential and commercial installations due to their ...



## Solar Panel Dimensions & Weight in Australia: The ...

Understanding the dimensions and weight of solar panels in Australia is essential when installing a new system. Learn about solar panel sizes in this article. The extra space that comes with 72-cell solar panels is due to ...

## How Do Solar Panels Work? Solar Power Explained

Solar panels work by converting incoming photons of sunlight into usable electricity through the photovoltaic effect. Metal plates on each side of the solar cells capture the electrical current and transfer it to connecting ...



## Contact Us

---

For catalog requests, pricing, or partnerships, please visit:  
<https://www.ian-solar.co.za>