

## Solar Energy South Africa

# How many meters does the photovoltaic bracket need to be raised



 **TAX FREE**    

**Product Model**  
HJ-ESS-215A(100KW/215KWh)  
HJ-ESS-115A(50KW 115KWh)

**Dimensions**  
1600\*1280\*2200mm  
1600\*1200\*2000mm

**Rated Battery Capacity**  
215KWH/115KWH

**Battery Cooling Method**  
Air Cooled/Liquid Cooled



**ENERGY STORAGE SYSTEM**

## Overview

---

Photovoltaic mounting systems (also called solar module racking) are used to fix on surfaces like roofs, building facades, or the ground. These mounting systems generally enable retrofitting of solar panels on roofs or as part of the structure of the building (called ). As the relative costs of solar photovoltaic (PV) modules has dropped, the costs of the racks have become.

## How many meters does the photovoltaic bracket need to be raised



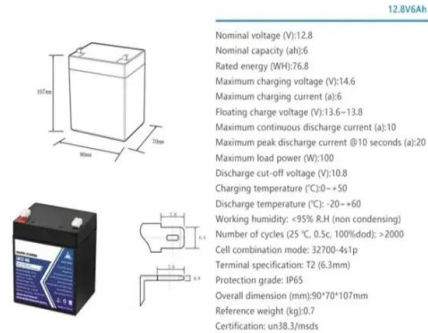
### Solar Panel Spacing Gaps (Why They Are Important)

Naturally, the final number will depend on many factors, including the type of brackets you use, the size of each solar panel, and even the size of the clamps you'll be using. Considering that most solar panels are 5.5 ...

### Large-Scale Ground Photovoltaic Bracket Selection

...

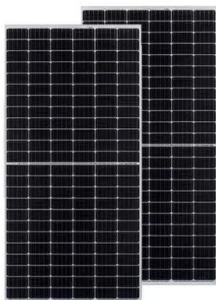
A-style photovoltaic brackets play a crucial role in photovoltaic systems, with their simple structure resembling the letter "A." They typically feature a one-to-one inclined support design, with the apex pointing towards the sun, providing ...



### Photovoltaic mounting system

OverviewOrientation and inclinationMountingShadePV FencingSound barriersSee also

Photovoltaic mounting systems (also called solar module racking) are used to fix solar panels on surfaces like roofs, building facades, or the ground. These mounting systems generally enable retrofitting of solar panels on roofs or as part of the structure of the building (called BIPV). As the relative costs of solar photovoltaic (PV) modules has dropped, the costs of the racks have become ...



## Ground Mounted Solar Panels

Planning is often required when the system is more than 5m from the building, over 4m high, or are larger sized system above 9m<sup>2</sup>. Buildings that are listed or in a conservation area where the solar can be seen from a road are another that ...



## **Solar Panels Ireland Cost Calculator [2025 Version]**

If your house is semi-detached or on a terrace, you do not need to leave this space on the adjoining side. the distance between point 1 and point 2 measures 9.17 meters, or 30.09 feet. In our experience, this is fairly accurate, ...

## **Photovoltaic Bracket \_Nanjing Chinylion Metal Products Co., Ltd.**

Photovoltaic bracket is mainly applicable to distributed power stations, rooftop power stations, household, commercial and other fields in the solar photovoltaic industry Number of views: ...



## **Mounting Solar Modules and Estimating Parts**

Estimating the number and size of rails, mid and end clamps, L-feet, or standoffs for your solar installation could be troublesome. This brief introduction offers insight into estimating the number of solar racking parts a project might need.

## Ground-mounted solar panels: what you need to ...

Of course, if your yard is on the small side, there might not be enough room to install as many panels as you need. Additionally, if you don't have the extra space, installing solar panels on the ground will leave little to no room for your ...

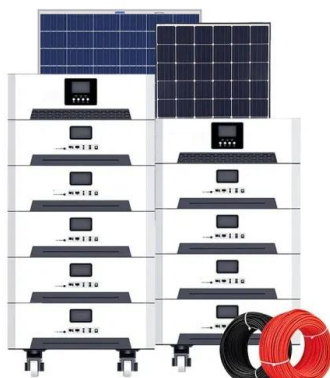


## Support Requirements for Quartz, and Granite Countertops

Determining whether you need support brackets or not for your countertops can be challenging as there are a lot of things to be considered to make the right decision. This article will outline the ...

## 5 Ways To Brace A Raised Garden Bed

How do you cross brace a raised bed? Cross bracing is done to extend a raised bed or give support to the bed if it is bowing due to heavy weight. As a rule, a bed will require bracing if it is 2 meters in length or above. 1. Cross bracing for ...



## Handrail Brackets: Material Options, Styles & How To Install

Fit the third bracket 100cm along from the second one; Fit the fourth bracket 100cm along from the third one (this should roughly align with the edge of the second riser down from the top of ...

## A Guide to Large Photovoltaic Powerplant Design

There are many factors that need to be taken into account in order to achieve the best possible balance between performance and cost. Our team of renewable energy engineers have the technical know-how and the ...



## Contact Us

---

For catalog requests, pricing, or partnerships, please visit:  
<https://www.ian-solar.co.za>