

Solar Energy South Africa

How to level photovoltaic panels during installation



Overview

By positioning solar panels according to true south and the azimuth angle, homeowners can ensure the best direction for their solar panels and arrays.

The ideal orientation for solar panels is an alignment with the true directions of north or south.

For most homeowners, the ideal angle for a solar panel installation is close to or equal to the latitude of your home. This angle is typically between 30 degrees and 45 degrees.

Dig the trench to the appropriate depth. Pull the wires allowing for ample excess wire on each end.

A rule of thumb for optimizing the angle of your solar panels is to mount them at an angle equivalent to the site's latitude, facing due south. The latitude of Normal, Illinois, is 40.5° . What angle should solar panels be installed in London?

For instance, the latitude of London is 51.5 degrees, but the optimum angle for solar panels in this city is 36 degrees. However, in the case of most rooftop solar panel installations, the angle of the solar panels is determined by the angle of the roof - there isn't much you can do to change it.

How to install solar panels?

Make space for the solar panel accessories (solar inverter, cables and solar batteries, if desired), for instance in a plant room 4. Plan a day for installation 5. Erect the scaffolding (this can be done by your supplier or by a company you organise) 6. The solar panel mounts will be installed 7. The professionals will install the solar panels 8.

What angle should photovoltaic panels be installed?

The ideal angle for photovoltaic panels depends on the latitude of the installation location. Generally, the optimal tilt angle is equal to the geographical latitude minus 15 degrees in summer, and plus 15 degrees in the winter, for maximum energy output (Koutroulis & Kolokotsa, 2016). What are the common maintenance tasks for photovoltaic panels?

.

What is the optimal tilt angle of photovoltaic solar panels?

The optimal tilt angle of photovoltaic solar panels is that the surface of the solar panel faces the Sun perpendicularly. However, the angle of incidence of solar radiation varies during the day and during different times of the year.

What angle should solar panels be installed on a roof?

Anywhere between 20 and 50 degrees will usually enable your system to produce roughly as much electricity as it could. And in the case of most rooftop solar panel installations, the angle of the solar panels is determined by the angle of the roof - so there isn't much you can do to change it.

What are photovoltaic panels & how do they work?

Photovoltaic panels, or solar panels, are the most crucial component of a solar power system. They are responsible for converting sunlight into direct current (DC) electricity through a process called the photovoltaic effect. Solar panels are made up of many individual solar cells, which are usually made from silicon, a semi-conducting material.

How to level photovoltaic panels during installation



 LFP 12V 100Ah

[Complete Solar Panel Installation Guide](#)

After solar panel installation, the system needs to be activated. This involves interconnecting the solar panels, installing the inverter, and commissioning the system. Interconnecting the Solar Panels. During this step, ...

Ultimate Guide to Photovoltaic Installation: Step-by-Step ...

Uneven surfaces on the roof can pose challenges during PV installation. If your roof exhibits undulations or warping, it is crucial to use adjustable roof hooks that can compensate for these ...



How are solar panels installed? , 11 steps explained

Unlike the slight regional variation in optimum angles, the best direction remains constant across the country, according to the MCS. If your roof has a south-facing section, your installer should prioritise using it, but if not, ...

Solar panel inclination angle, location and orientation

Any implementation of a sustainable photovoltaic solar energy system implies the optimization of the resources to be used. Therefore, it is the

basis for the design and assembly of solar installations to optimize renewable ...

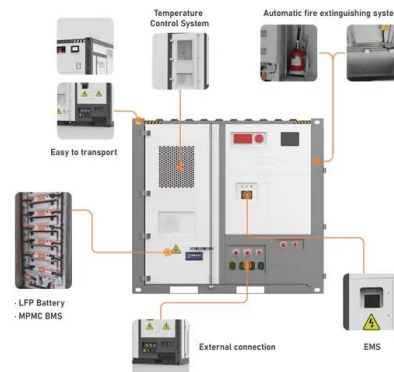


21 Essential Tools You Need for Solar Panel ...

Solar energy seems to be the most chosen because of its abundance and affordability. Solar energy is considered the most convenient renewable energy as it protects our environment and saves customers cash in ...

How much does Solar Panel Installation Cost in ...

Monocrystalline or Mono PERC Solar Panels. On average, monocrystalline solar panels (the most energy-efficient option) cost Rs. 25 to Rs. 30 per watt, meaning that outfitting a 3kW solar panel system (also known as ...

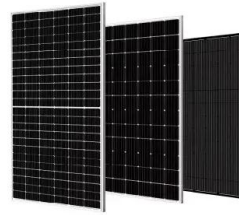


How to Install Solar Inverter at Home [Step by Step ...

For a DIY solar installation, it is crucial to ensure a smooth solar power inverter installation process. Here is a step-by-step procedure to help you install a solar panel inverter at home correctly: Step 1: Before beginning ...

A Bifacial Solar Panel Installation Guide

Ground-mounted bifacial solar installations: Bifacial panels are well-suited for ground-mounted solar systems as they can capture sunlight reflected from the ground, increasing energy production. These systems allow ...



A step-by-step guide to installing solar panels

Now that the cost of energy has rapidly increased and the cost of solar installations has levelled out, the return on investment is once again potentially very good. Here we explore what's involved in installing both solar ...

A Full Guide to Photovoltaic Panel Installation and ...

Before embarking on a solar panel installation project, selecting the appropriate site for the panels is crucial. safety glasses, and a hard hat should be worn during installation. Fall Protection: Use harnesses, lifelines, ...



Solar panel inclination angle, location and orientation

If you're at the stage of researching how to choose a solar panel installer for your home, you'll want to know what the installation process will look like. Here's all the information you need about how your solar panel system ...

Contact Us

For catalog requests, pricing, or partnerships, please visit:
<https://www.ian-solar.co.za>