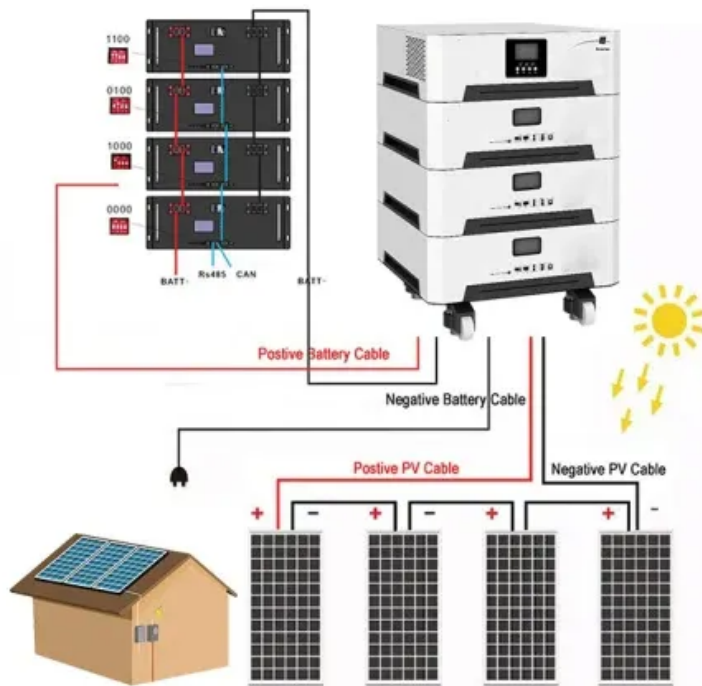


Solar Energy South Africa

How to test whether the photovoltaic panel group is connected



Overview

How to test a solar panel?

Testing your solar panel is all about knowing its ratings and the importance of Open Circuit Voltage (Voc) in predicting its power output. But don't worry, setting up your multimeter doesn't have to be complicated! Just make sure you're in DC voltage mode and your probes are connected to the panel.

How to test a solar module?

working is to perform an Open Circuit Voltage test (Voc). This test can be performed at different locations withi ential problems. Basic Photovoltaic (PV) Module TestingThe best, quickest, and easiest way to test a solar module is to check both the o.

How do you test a PV module?

Basic Photovoltaic (PV) Module TestingTesting PV ModulesThe following is a discussion on the best practices for testing a PV Modul to determine whether or not it's functioning properly. The simplest way to test whether a module is working is to perform an Open Circuit Voltage test (Voc). This test can be performed at different locations withi.

How do you check a solar panel voltage?

You can use it to check: Here's how: Multimeter — I recommend getting one that is auto-ranging. Also, a simple voltmeter won't work here. You need a multimeter that can measure both volts and amps. 1. Locate the open circuit voltage (Voc) on the specs label on the back of your solar panel. Remember this number for later.

How do you test a solar panel with a multimeter?

A solar panel is a group of modules mounted to a section of rack, as seen here. A multimeter is a tool that measures the voltage, current, and resistance of an electrical circuit. Fluke recommends using the Fluke 117 Electrician's

Multimeter to test solar modules. Here's how a technician tests solar modules with a multimeter:.

How can solar panels be detected?

Here's how they can be detected through testing: Regularly conducting tests and inspections on solar panels can identify potential issues such as shading problems, dirt buildup, electrical faults, and physical damage in their early stages. Detecting these issues beforehand is crucial because it allows for timely repairs and maintenance.

How to test whether the photovoltaic panel group is connected



51.2V 300AH

How to Connect Solar PV to Your Domestic Electrical ...

Use it to test the solar panel output. You want to make sure the panels are producing the right amount of electricity. Testing the System: Turn on the system and check if the inverter is working properly. The inverter should ...

How to Test a Solar Panel: A Complete Guide

Step-by-step guide for how to test a solar panel. When you test a solar panel, it's important to do so in full sunlight; i.e. on a sunny day, at noon. Once the conditions are right, you can start following the steps below! 1. ...



How can you tell if your solar panels are working?

Solar panel orientation and tilting: Panels facing due north will usually generate more energy (over the day) than those facing east or west, and they should be optimally tilted. System losses: Cabling loses about 2% of ...

Testing PV Modules

The best, quickest, and easiest way to test a solar module is to check both the open circuit voltage (Voc) and short circuit current (Isc). Depending on the reason for testing; the test can be done: at the controller; at the combiner box (if

...



Solar Panel Series Vs Parallel: Wiring, Differences, And ...

Every solar panel typically comes with a female and a male MC4 connector. Usually, the female MC4 connector stands for the negative terminal, and the male MC4 connector represents the positive terminal of the ...



How to Properly Test Your Solar Panel Output

5. Connect Multimeter to Solar Panel. Attach the multimeter to the solar panel. The positive lead (or red wire) should be connected to the panel's positive terminal. Likewise, the negative lead (or black wire) must be connected to the ...



How to Connect Solar Panels in Parallel and Series

Getting solar panel wiring right is key to a safe and efficient solar system. The way you connect your solar panels affects how well your solar panel system performs. It depends on the inverter type, the voltage needed, current ...

Contact Us

For catalog requests, pricing, or partnerships, please visit:
<https://www.ian-solar.co.za>