

## Solar Energy South Africa

# Island mode isolator Bouvet Island



## Overview

---

The second edition of the IET Code of Practice for Electrical Energy Storage Systems was published in December 2020. It builds on the first edition to provide the most up-to-date guidance to help support the growth.

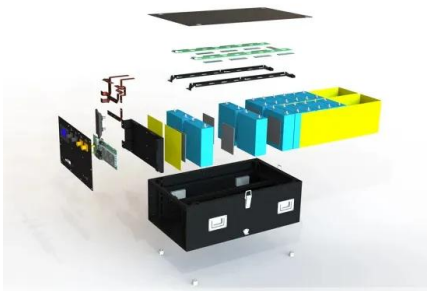
EESS mean that PEIs can continue to supply loads when the normal supply is interrupted. EESS power conversion equipment (PCE) is typically connected either: 1. on the.

Since EESS are effectively types of generator, Regulations 21 and 22 of the Electricity Safety, Quality and Continuity Regulations (ESQCR) guide the requirements for.

In connected mode, an installation with a TN earthing arrangement (TN-C-S or TN-S) may use the distributor's means of earthing. In a TT system, the consumer's earth electrode is used.

A consumer earth electrode is required for island mode operation, because, as Regulation 551.4.3.2.1 of BS 7671 states, the distributor's earthing arrangement cannot be relied.

## Island mode isolator Bouvet Island



### Bouvet Island holiday homes, Bouvet Island: Houses & more

Book your Bouvet Island self catering accommodation online. Explore a large selection of holiday homes, including houses, apartments & more: the perfect holiday lettings with reviews for short & long stays in Bouvet Island, . Ideal for families, groups & couples. Bouvet Island offers the best alternatives to hotels.

### Bouvet Island: The Most Remote Island In The World

The discovery of Bouvet Island dates back to 1739 when a French naval officer, Jean-Baptiste Charles Bouvet de Lozier, first laid eyes on the remote island. Despite this initial discovery, Bouvet remained largely unexplored for centuries until the British landed there in 1825.



### [Bouvet Island map -- Google\(TM\)](#)

Address search, regions list of Bouvet Island; cities, roads, streets and places. Online. Google map: Bouvet Island plan - loading Search. Antarctica. Google map: Bouvet Island. Switch map. Plan ? Satellite view Weather forecast Apple map OpenStreetMap Google map Esri map MapBox Yandex map Temperature labels Map labels.

### [sensor island mode](#)

```

??sensor??????,???,????dump,??crashman??,??ad
sp_procsstoolscomm_scriptsssc_parser.cmm????
? island heap??????,?????SNS_ISLAND_HEAP_ALL
OC????????2.QURTOS_ISLAND_POOL??32k,????QU
RTOS_SSC_ISLAND_POOL????????????????64k??,??
???? ...
    
```



## Travel Facts

Bouvet Island, often called the "loneliest place on Earth," is an uninhabited volcanic island located in the South Atlantic Ocean. As a Norwegian dependency, it lies approximately 2,600 kilometers (1,615 miles) southwest of South Africa and over 1,600 kilometers (1,000 miles) from Queen Maud Land in Antarctica, making it one of the most isolated landmasses in the world.

## Climate information for BOUVET ISLAND in Bouvet Island

BOUVET ISLAND. The table below displays average monthly climate indicators in BOUVET ISLAND based on 8 years of historical weather readings. Temperature by: Fahrenheit / Centigrade BOUVET ISLAND 54 40 S, 3 30 E, 91 feet (28 meters) above sea level.



## [Bouvet Island](#)

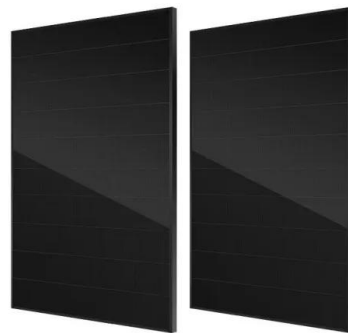
Bouvet Island (/ ' b u : v e l / BOO-vay; Norwegian: Bouvetøya [3] [bu'vè:oeY?]) [4] is an uninhabited island and dependency of Norway is a protected nature reserve. It is a subantarctic volcanic island, situated in the South Atlantic Ocean at

the southern end of the Mid-Atlantic Ridge, and is the world's most remote island. Located north of the Antarctic Circle, it is ...



## Island mode operation in hydropower plant , Modeling and ...

Island operation of hydropower plant is fully discussed. Problems associated during island operation are also explained. Island mode operation in hydropower plant. \$16.00. Add to cart. Buy chapter PDF Checkout Buy full book access Modeling and Dynamic Behaviour of Hydropower Plants. \$205.00. Add to cart. Buy full



## [Bouvet Island](#)

If you want to get away to get away from it all, forget the Caribbean, the South Pacific, or even the South Pole. We've got a place that beats them all: Bouvet Island, a small outcropping of rock and ice in the Southern Ocean. The nearest land is more than a thousand miles away, making Bouvet the most remote island on the planet. A French sailor named ...

## Island Mode

Multimode inverters operate in either island mode Texas IHB Electrical Code 2020 > 7 Special Conditions > 710 Stand-Alone Systems > 710.6 Equipment Approval. 705.50 Special Conditions,

System Operation. and operate as an isolated microgrid system operating in island mode



## The island at the end of the world: Bouvetøya

The end-point of the MAR is called the Bouvet Triple Junction - not entirely correct as Bouvet island is 250 kilometer away but there was nothing else here which could provide a name! The fault is called the Conrad Transform towards the west, and the Bouvet transform to the east, and separates the stable Antarctic plate, the African plate and

## Bouvet Island

Bouvet Island (/ ' b u: v eɪ / BOO-vay; Norwegian: Bouvetøya [3] [bu've:øeY?]) [4] is an uninhabited subantarctic volcanic island and dependency of Norway is a protected nature reserve, and situated in the South Atlantic Ocean at the ...



## Island Mode N-E Bond Relay, How do inverters manage this?

When the Island Mode Isolator makes again (on restoration of the grid supply), the N-E contact opens thus removing what would be detected as a N-PE fault by any upstream RCD and preventing it from tripping. I can find no reference to a N-E Bond Relay in the documentation for the

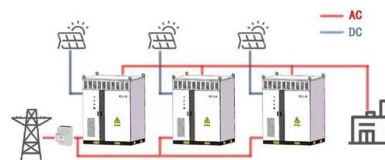


inverter. There is no reference to an internal one nor a reference

## [Bouvet Island : r/amateurradio](#)

Right now there is a DXpedition on Bouvet Island which is considered to be the most remote island in the world. Access to it is very difficult and there has been multiple attempts to activate the island. They are using the callsign 3Y0J. They are number 2 on the most wanted listed following DPRK (North Korea).

WORKING PRINCIPLE



## [Bouvet Island](#)

The island lies 1,700 km (1,100 mi) north of the Princess Astrid Coast of Queen Maud Land, Antarctica, 1,870 km (1,160 mi) east of the South Sandwich Islands, 1,845 km (1,146 mi) south of Gough Island, and 2,520 km (1,570 mi) south-southwest of the coast of South Africa. It has an area of 49 km<sup>2</sup> (19 sq mi), 93 percent of which is covered by a glacier. The centre of the island ...

## Islanding

Islanding is the intentional or unintentional division of an interconnected power grid into individual disconnected regions with their own power generation.. Intentional islanding is often performed as a defence in depth to mitigate a cascading blackout. If one island collapses, it will not take neighboring islands with it. For example, nuclear power plants have safety-critical cooling



...

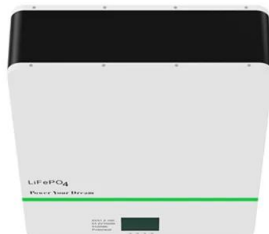


## Technical note ABB medium voltage wind turbine converters ...

turbine in power safe mode and enable the start of the island mode operation. Compared to a grid loss back-up system using a diesel generator, it is estimated that an UPS-based back-up system results in savings between 2.5 and 4 million euros over a 25-year long lifetime of a wind farm with 80 wind turbines.<sup>1</sup>

## Bouvet Island in Norway: One of the Most Remote Places on Earth

Bouvet Island in Norway, an uninhabited volcanic island, emerges as a remote speck in the vastness of the South Atlantic Ocean. This Norwegian territory, one of the most secluded islands on Earth, is shrouded in mystery and intrigue. Its geographical positioning is unique; it sits at approximately 54°26'S 3°24'E, placing it over 1,600 kilometers from the nearest landmass, ...

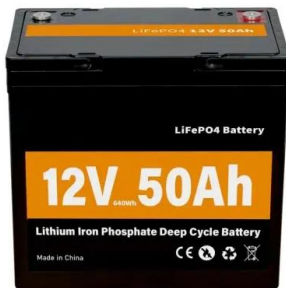


## [Bouvet Islandball](#)

Bouvet Islandball is a dependency of Norwayball is the most remote island in the world, located somewhere in between South Africaball and Antarcticaball ing permanently covered in ice, its clay is uninhabited and is only home to seals and a weather station.

## World's Most Isolated Islands , (2024) Travel S Helper

If Tristan da Cunha represents the pinnacle of inhabited isolation, Bouvet Island takes the crown for uninhabited remoteness. This Norwegian territory in the South Atlantic Ocean is often described as the most isolated island on Earth. Bouvet Island is located at 54°25'S 3°22'E, placing it in the southern part of the South Atlantic Ocean.



### Islanded Mode

3.1 Island mode. In the islanded mode, the microgrid functions as a separate entity and is responsible for real and reactive power balancing, unintentional islanding is the electrical isolation of a section or area of the distribution network from the upstream network or the main grid while the isolated area is still powered by one or a few

## Contact Us

---

For catalog requests, pricing, or partnerships, please visit:  
<https://www.ian-solar.co.za>