

## Solar Energy South Africa

# Longi 530W photovoltaic panel size



## Overview

---

What is a 530W hi-mo5 solar panel?

Posted in Longi, Solar Panels, Standard Solar Panels. Longi's 530W Hi-Mo5 panels are made up of 66 cells, providing a great power output to size ratio and excellent performance - achieving over 21% efficiency. The product family is designed mainly for residential and C&I rooftop systems. Key features:

Who is LONGi Solar?

Longi Solar is one of the largest silicon producers in the world and a specialist in mono-crystalline cell and panel manufacturing. Please visit our panel characteristics guide for an explanation of the above data. Logistics information: This panel is too large to be placed on a tail lift. It also can't be double stacked in a standard lorry.

How many cells are in a 530W hi-mo5 panel?

Log in or register for trade discounts! BUY! Longi's 530W Hi-Mo5 panels are made up of 66 cells, providing a great power output to size ratio and excellent performance - achieving over 21% efficiency. The product family is designed mainly for residential and C&I rooftop systems. Key features: Half-cell modules and PERC design deliver a high output.

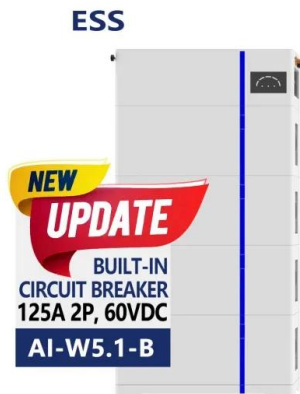
What is Longi Hi-mo 5?

LONGi Hi-MO 5 high-efficiency PV modules are widely used from alpine grasslands to desert wastelands, and from ponds and vegetable beds to residential dwellings, with its advantages of "higher power, lower degradation and higher reliability", click to learn more.

What services does Longi offer?

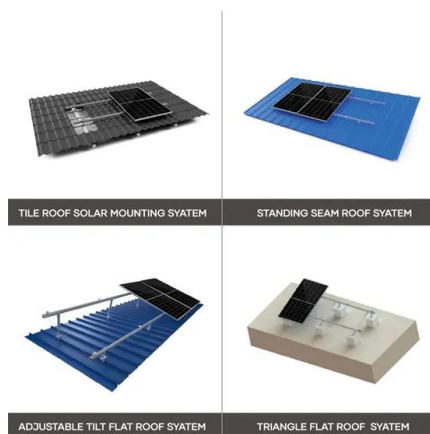
LONGi offers professional consulting services, professional knowledge of PV power plant and charging station solutions, and full life cycle O&M capabilities.

## Longi 530W photovoltaic panel size



### Panel Solar LONGI 530W Hi-MO X6

El panel solar LONGI Hi-MO X6 (LR5-66HTH-530M) es un módulo monocristalino de 530W con 132 células, destacando por su impresionante eficiencia del 22,3% y la inclusión de células de alta eficiencia HPBC.. Hi-MO X6 se distingue por ...

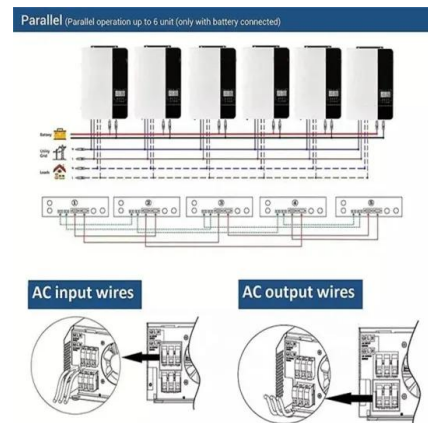


### PANEL LONGI LR5-66HTH 530W

El panel Longi LR-66HTH es un módulo fotovoltaico monocristalino de 530W y de 132 células partidas (6X22) HC tecnología PERC. Destaca por su gran rendimiento y durabilidad y su alta eficiencia 22,3%. Tiene un marco de

## Longi Hi-Mo X6 HTH 530W Black Framed Monocrystalline Solar Panel

Longi's 530W Hi-Mo5 panels are made up of 66 cells, providing a great power output to size ratio and excellent performance - achieving over 21% efficiency. Please note that due to the ...



## Longi Hi-Mo X6 HTH 530W Black White Mono

Longi's 530W Hi-Mo5 panels are made up of 66 cells, providing a great power output to size ratio and excellent performance - achieving over 21% efficiency. The product family is designed mainly for residential and C& I rooftop systems.

35mm ...



## Longi Hi-Mo X6 HTH 530W Black Framed Monocrystalline Solar Panel

Longi's 530W Hi-Mo5 panels are made up of 66 cells, providing a great power output to size ratio and excellent performance - achieving over 21% efficiency. The product family is designed ...

## Longi Solar 530W MONO Hi-MoX6 Black Frame PERC ...

The Longi Solar 530W MONO Hi-MoX6 Black Frame PERC Half Cell (LR5-66HTH-520-540) solar panel is a 530W monocrystalline PV module featuring Longi's proprietary mono wafer and cell technologies. With an impressive ...



## Contact Us

For catalog requests, pricing, or partnerships, please visit:  
<https://www.ian-solar.co.za>