

Solar Energy South Africa

Marshall Islands c



Overview

The Marshall Islands (Marshallese: Ṃajeḷ), officially the Republic of the Marshall Islands (Marshallese: Aolepān Aorōkin Ṃajeḷ), is an island country west of the International Date Line and north of the equator in the Micronesia region of the Northwestern Pacific Ocean. The territory consists of 29 coral atolls and five main islands as well as 1,220 other very small ones. The Marshall Islands (Marshallese: Ṃajeḷ), officially the Republic of the Marshall Islands (Marshallese: Aolepān Aorōkin Ṃajeḷ), is an island country west of the International Date Line and north of the equator in the Micronesia region of the Northwestern Pacific Ocean. The territory consists of 29 coral atolls and five main islands as well as 1,220 other very small ones, divided across two island chains: Ratak in the east and Ralik in the west. 97.87% of its territory is water, the largest proportion of water to land of any sovereign state. The country shares maritime boundaries with Wake Island to the north, Kiribati to the southeast, Nauru to the south, and the Federated States of Micronesia to the west. The capital and largest city is Majuro, home to approximately half of the country's population. The Marshall Islands are one of only four atoll based nations in the entire world. Austronesian settlers reached the Marshall Islands as early as the 2nd millennium BC and introduced Southeast Asian crops, including coconuts, giant swamp taro, and breadfruit, as well as domesticated chickens, which made the islands permanently habitable. Several Spanish expeditions visited the islands in the mid-16th century, but Spanish galleons usually sailed a Pacific route farther north and avoided the Marshalls. European maps and charts named the group for British captain John Marshall, who explored the region in 1788. American Protestant missionaries and Western business interests began arriving in the 1850s. German copra traders dominated.

PrehistoryLinguistic and anthropological studies have suggested that the first settlers of the Marshall Islands arrived from the . suggests that may have been inhabited as early as 1200 BCE, though samples may not have been c. PrehistoryLinguistic and anthropological studies have suggested that the first settlers of the Marshall Islands arrived from the . suggests that may have been inhabited as early as 1200 BCE, though samples may not have been collected from secure contexts and older driftwood samples may have affected results. Archaeological digs on other atolls have found evidence of human habitation dating around the 1st century CE at the village of on and on . The Austronesian settlers , including , , and , as well as domesticated chickens throughout the Marshall Islands. They possibly seeded the islands by leaving coconuts at seasonal fishing camps before permanently settling years

later. The southern islands receive heavier rainfall than the north, so communities in the wet south subsisted on prevalent taro and breadfruit, while northerners were more likely to subsist on and coconuts. Southern atolls probably supported larger, more dense populations. The Marshallese sailed between islands on made from breadfruit-tree wood and coconut-fiber rope. They navigated by using the stars for orientation and initial course setting, but also developed a technique of interpreting disruptions in to determine the location of low coral atolls below the horizon. They noticed that swells refracted around the undersea slope of atolls. When refracted swells from different directions met, they created noticeable disruption.

The Marshall Islands sit atop ancient submerged volcanoes rising from the ocean floor, about halfway between and , north of and , east of the , and south of the disputed U.S. territory of , to which it also lays claim. The atolls and islands form two groups: the and the The Marshall Islands sit atop ancient submerged volcanoes rising from the ocean floor, about halfway between and , north of and , east of the , and south of the disputed U.S. territory of , to which it also lays claim. The atolls and islands form two groups: the and the . The two island chains lie approximately parallel to one another, running northwest to southeast, comprising about 750,000 square miles (1,900,000 km) of ocean but only about 70 square miles (180 km) of land mass. Each includes 15 to 18 islands and atolls. The country consists of a total of 29 and five individual islands situated in about 180,000 square miles (470,000 km) of the Pacific. The largest atoll with a land area of 6 square miles (16 km) is Kwajalein. It surrounds a 655-square-mile (1,700 km) lagoon. Twenty-four of the atolls and islands are inhabited. The remaining atolls are uninhabited due to poor living conditions, lack of rain, or nuclear contamination. The uninhabited atolls are: • • .

Historical population figures for the Marshall Islands are unknown. In 1862, the population of the Islands was estimated at 10,000. In 1960, the population of the Islands was approximately 15,000. The 2021 counted 42,418 residents, 23,156 of whom (approximately 54.6%) lived on . 77.7% of the population lived in an urban setting on Majuro or Historical population figures for the Marshall Islands are unknown. In 1862, the population of the Islands was estimated at 10,000. In 1960, the population of the Islands was approximately 15,000. The 2021 counted 42,418 residents, 23,156 of whom (approximately 54.6%) lived on . 77.7% of the population lived in an urban setting on Majuro or , the country's secondary urban center. This figure excludes Marshall Islands natives who have relocated elsewhere; the allows them to freely relocate to the United States and obtain work there. Approximately 4,300 Marshall Islands natives relocated to , in the United States. This figure represents the largest population concentration of Marshall Islands natives

outside their island home. Most residents of the Marshall Islands are Marshallese, of Polynesian origin and are believed to have migrated from the Pacific Islands to the Marshall Islands several thousand years ago. A minority of the Marshallese have European and ancestry such as German and American. A Majority have African and ancestry. About one-half of the nation's population lives in Majuro and Ebeye Atolls. The official languages of the Marshall Islands are Marshallese and English. Bot.

The government of the Marshall Islands operates under a mixed parliamentary-presidential system as set forth in its Constitution. Elections are held every four years in (for all citizens above 18), with each of the twenty-four constituencies (see below) electing one or more representatives (senators) to the lower house of RMI's unicameral legislature, the Nitijela. The government of the Marshall Islands operates under a mixed parliamentary-presidential system as set forth in its Constitution. Elections are held every four years in (for all citizens above 18), with each of the twenty-four constituencies (see below) electing one or more representatives (senators) to the lower house of RMI's unicameral legislature, the Nitijela. (, the capital atoll, elects five senators.) The President, who is head of state as well as head of government, is elected by the 33 senators of the Nitijela. Four of the five Marshallese presidents who have been elected since the Constitution was adopted in 1979 have been traditional. In January 2016, senator Hilda Heine was elected by Parliament as the first female president of the Marshall Islands; previous president lost office in a coup after serving two weeks. Legislative power lies with the Nitijela. The Nitijela is an advisory body comprising twelve paramount chiefs. The executive branch consists of the President and the Presidential Cabinet, which consists of ten ministers appointed by the President with the approval of the Nitijela. The twenty-four electoral districts into which the country is divided correspond to the inhabited islands and atolls. There are currently four political parties in the Marshall Islands.

Although the ancient skills are now in decline, the Marshallese were once able to sail, using the outrigger canoe and the double outrigger canoe.

Major sports played in the Marshall Islands include volleyball, basketball (primarily by men), baseball, soccer and a number of water sports. The Marshall Islands has been represented at the Olympics at all games since the 2008 Beijing Olympics. In the 2020 Tokyo Olympics, the Marshall Islands were represented by two swimmers. Major sports played in the Marshall Islands include volleyball, basketball (primarily by men), baseball, soccer and a number of water sports. The Marshall Islands has been represented at the Olympics at all games since the 2008 Beijing Olympics. In the 2020 Tokyo Olympics, the Marshall Islands were represented by two swimmers. Association footballThe Marshall Islands have a small club league, including Koboer as the most successful club. One tournament was held by Play Soccer

Marshall Islands c



[Culture of Marshall Islands](#)

The Republic of the Marshall Islands (RMI) formed a constitutional government in 1979 and gained formal independence in 1986. Prior to that time, the Marshall Islands was a district within the Trust Territory of the Pacific Islands (TTPI) administered by the United States.

[Marshall Islands](#)

The Marshall Islands is an isolated, sparsely populated, low-lying Pacific island country consisting of approximately 70 sq. miles of land spread out over 750,000 sq. miles of ocean just north of the equator. These characteristics make it vulnerable to transnational threats, natural disasters, and effects of climate change.



[RMI Washington D.C. Embassy](#)

Welcome to the official website of the Embassy of the Republic of the Marshall Islands (Marshall Islands) to the United States of America in Washington, D.C. For over seven decades, the Marshall Islands and the United States have ...

[List of islands of the Marshall Islands](#)

The remaining 11 atolls/islands are currently uninhabited. According to the Constitution of the Republic of the Marshall Islands, the uninhabited

Calendar for the Supreme Court, the High Court and Traditional Rights

For more information on the calendar, please contact the Clerk of the Courts by mail, telephone, fax, or email at the following address: Clerk of the Courts, Republic of the Marshall Islands Judiciary, P.O. Box B, Majuro, MH 96960, Marshall Islands, phone 692-625-3201/3297, and email Marshall.Islands.Judiciary@gmail .



REPUBLIC OF THE MARSHALL ISLANDS RULES FOR ...

Courts of the Marshall Islands, whose mailing address is: Chief Clerk of the Courts Republic of the Marshall Islands P.O. Box B Majuro, MH 96960 Marshall Islands (c) The term "counsel" means both attorneys, trial assistants, and police prosecutors. (d) The term "Court" as used herein regarding the administration of these rules means

[Forever Marshall Islands](#)

"Forever Marshall Islands" (Marshallese: "Indeoo Majel"), also known by its incipit, "Aelon Eo Ao" ("Our Islands"), [1] is the national anthem of the Marshall Islands. The lyrics were written by former President Amata Kabua, and the music was composed by Korean composer Gil ok-yun (also known by his Japanese name, Jun Yoshiya, ???



Cardiovascular Invasive Specialist Average Salary in Marshall Islands

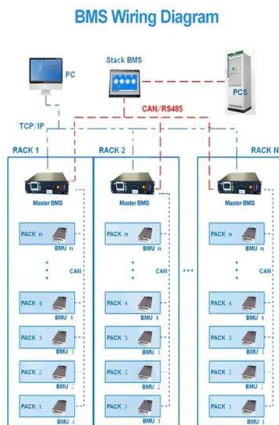
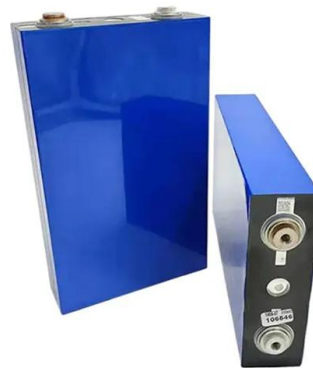
Salary Range, Minimum Wage, and Starting



Salary. Salaries for the position Cardiovascular Invasive Specialist in Marshall Islands range from 0 USD (starting salary) to 0 USD (maximum salary). It should be noted that the given figure is not the legally mandated minimum wage; rather, it represents the lowest figure reported in a salary survey that included thousands of ...

Home Page » College of the Marshall Islands

The Upward Bound Program is funded by a grant from the U.S. Department of Education and administered by the College of the Marshall Islands. The ultimate goal of the UB program is to assist high school students with preparation for post-secondary education through the development of academic and social skills.



Marshall Islands , Map, Flag, History, Language, ...

Marshall Islands, country in the central Pacific Ocean. It consists of some of the easternmost islands of Micronesia. The Marshalls are composed of more than 1,200 islands and islets in two parallel chains of coral ...

MARSHALL ISLANDS

o The Republic of the Marshall Islands' (RMI) island groups have experienced warming of around 0.6°C since 1980. o Future trends in warming are obscured by the inability of climate models to accurately simulate trends at sufficiently small spatial scales. Warming is likely to take place at a rate slightly lower than the global average.





Majuro

Majuro (/ ' m æ d ? ? r o ? /; Marshallese: Majro [mjæzj(e)r?o] [1]) is the capital and largest city of the Marshall Islands is also a large coral atoll of 64 islands in the Pacific Ocean forms a legislative district of the Ratak (Sunrise) Chain of the Marshall Islands. The atoll has a land area of 9.7 square kilometers (3.7 sq mi) and encloses a lagoon of 295 square kilometers

Constitution of the Republic of the Marshall Islands

of the Marshall islands ò that Amendment also replaced the term Marshall Islands as it appears subsequently herein, with the term Republic] §2. Inconsistency with this Constitution. (1) Any existing law and any law made on or after the effective date of



Isole Marshall

Le isole Marshall (in marshallese: Aorokin Majel; in inglese: Marshall Islands; pronuncia: ['m?r??l 'all?ndz], in tedesco: Marschallinseln), ufficialmente Repubblica delle Isole Marshall (in marshallese: Aolepan Aorokin Majel; in inglese: Republic of the Marshall Islands), sono uno Stato insulare dell'Oceania (181,42 km², 50 840 abitanti nel 1999), con capitale Majuro [3] o

Office Of Commerce, Investment & Tourism , Visit Marshall Islands

The Office of Commerce, Investment & Tourism (OCIT) is the Republic of the Marshall Island's

(RMI's) investment, tourism and trade promotion agency with the mandate to promote and facilitate exports, investment and tourism to boost economic growth in order to improve the welfare of the people.



Quan dao Marshall - Wikipedia tieng Viet

Embassy of the Republic of the Marshall Islands Washington, DC Luu tru 2021-12-02 tai Wayback Machine official government site; News. Marshall Islands Journal Luu tru 2022-04-12 tai Wayback Machine Weekly independent national newspaper; Overviews. CIA World Factbook - Marshall Islands Luu tru 2010-07-11 tai Wayback Machine

?????

????????(????: Aolepan Aorokin Majel ;??: Republic of the Marshall Islands) ??????????(?: Marshall Islands),???????????????? ??????????????????? ??,??????181????,????????????????,????68,480?,????



Obligations concerning Negotiations relating to Cessation of the

On 24 April 2014, the Republic of the Marshall Islands filed Applications against nine States (in alphabetical order : China, Democratic People's Republic of Korea, France, India, Israel, Pakistan, Russian Federation, United Kingdom of Great

Britain and Northern Ireland and United States of America), accusing them of not fulfilling their obligations with respect to the cessation of the



Marshall Islands

The Marshall Islands were settled initially around the beginning of the Christian era by Micronesians who may have been influenced by early Polynesian (Lapita) culture. Radiocarbon dates from earth-oven charcoal samples that were excavated in Laura village on Majuro yielded dates of about 30 bce and 50 ce. The early Marshall Islanders were skilled ...



Marshall Islands

Humans arrived in the Marshall Islands in the first millennium B.C. and gradually created permanent settlements on the various atolls. The early inhabitants were skilled navigators who frequently traveled between atolls using stick charts to map the islands. Society became organized under two paramount chiefs, one each for the Ratak (Sunrise

List of islands of the Marshall Islands

The remaining 11 atolls/islands are currently uninhabited. According to the Constitution of the Republic of the Marshall Islands, the uninhabited atolls/islands Narikrik, Erikub, Jemo, Taka, Bikar, Bokak, Rongrik and Ailinginae shall each ...



[Marshall Islands](#)

The Marshall Islands, officially the Republic of the Marshall Islands, is a Micronesian island nation in the western Pacific Ocean, located north of Nauru and Kiribati, east of the Federated States of Micronesia and south of the U.S. territory of Wake Island. Bikini and Enewetak atolls are former U.S. nuclear test sites. These tests resulted in the radiation poisoning of 236 Marshallese, and

[Marshall Islands Travel Advisory](#)

Read the country information page for additional information on travel to Marshall Islands. If you decide to travel to Marshall Islands: Enroll in the Smart Traveler Enrollment Program to receive security messages and make it easier to locate you in an emergency. Follow the Department of State on Facebook and Twitter. Review the Country



[REPUBLIC OF THE MARSHALL ISLANDS](#)

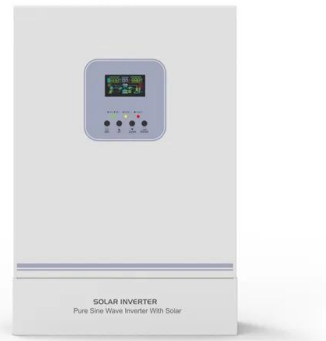
Marshall Islands Maritime and Corporate Administrators, Inc., 11495 Commerce Park Drive, Reston, VA 20191-1506 USA. The most current version of all Republic of the Marshall Islands Marine Notices may be found at MI-01,

Rev. 10/14 REPUBLIC OF Marine Notice THE MARSHALL ISLANDS



Marshall Islands (Republic of) , Regional NDC Pacific Hub

The Republic of the Marshall Islands (RMI) is a coral atoll nation dispersed across nearly two million square kilometers of the Pacific Ocean comprising 1,156 islands and 29 other atolls with an average elevation of just six feet above sea level. Due to its geographic location, RMI is one of the world's most climate vulnerable countries.



Marshall Islands , Map, Flag, History, Language, Population,

Marshall Islands, country in the central Pacific Ocean. It consists of some of the easternmost islands of Micronesia. The Marshalls are composed of more than 1,200 islands and islets in two parallel chains of coral atolls--the Ratak, or Sunrise,

REPUBLIC OF Marine Notice THE MARSHALL ISLANDS

Marshall Islands Maritime and Corporate Administrators, Inc., 11495 Commerce Park Drive, Reston, VA 20191-1506 USA. The most current version of all Republic of the Marshall Islands Marine Notices may be found at MI-01, Rev. Apr/2016 REPUBLIC OF Marine Notice THE

MARSHALL ISLANDS



TOURISM

The Tourism Unit was merged with the Office of Commerce and Investment (OCI) in 2018. Therefore, the OCI is now called the Office of Commerce Investment and Tourism (OCIT). The Tourism Unit is responsible for the overall development of the tourism sector in the Republic of the Marshall Islands.

Contact Us

For catalog requests, pricing, or partnerships, please visit:
<https://www.ian-solar.co.za>