

## Solar Energy South Africa

# Moldova 3 8 kwh lithium ion battery



## Moldova 3 8 kwh lithium ion battery



### SimpliPhi Power PHI 3.8KWH Lithium Battery

The PHI 3.8 kWh 60 Amp deep-cycle Lithium Ferro Phosphate (LFP) battery is optimized with proprietary cell architecture, power electronics, BMS and assembly methods. Some of the features are: It is Click to Enlarge. SimpliPhi Power ...

### PHI 3

The safest Lithium Ion chemistry available OCPD Built-in, accessible 80 Amp DC breaker on/off switch BMS Built-in Battery Management System COMPATIBILITY Compatible with all industry standard inverters and charge controllers Rated kWh Capacity @ C/2 3.8 kWh DC @ 100% DOD 3.04 kWh DC @ 80% DOD 3.8 kWh DC @ 100% DOD 3.04 kWh DC @ 80% DOD



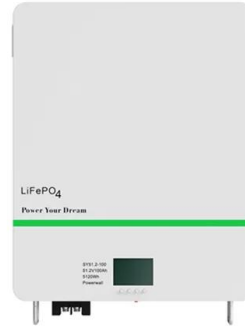
### [4.8-kWh Battery Wholesale](#)

Check out 4.8 kWh battery packs' available brands, prices, sizes, weights, warranty, and voltage. 4.8-kWh - Lithium Battery STE Series . Nonimal Energy: 4.8 kWh Cell Technology: LFP. Discharge Time(hr): 5. View Product Download PDF. 4.8-kWh - XTRA POWER LITHIUM ION BATTERY MODULE . Nonimal Energy: 7.2 kWh. Region: China. Cell Technology

### [Lithium-ion Battery DATA SHEET](#)

Li-ion Battery Edition: NOV. 20 10 Page:1/9 1.

Scope This specification describes the technological parameters and testing standard for the lithium ion rechargeable cell manufactured and supplied by EEMB Co. Ltd. 2. Products specified 2.1 Name Cylindrical Lithium Ion Rechargeable Cell 2.2 Type LIR18650-2600mAh 3. References

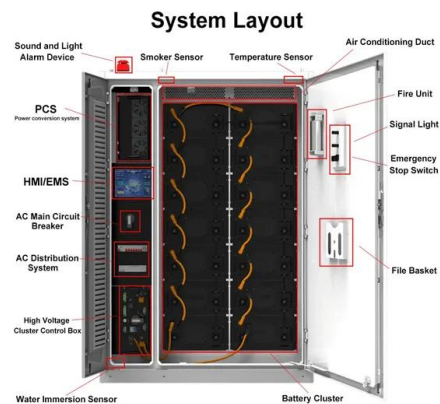


## SimpliPhi PHI-3.8-24-60 24 Volts Lithium Ion Battery

SimpliPhi Power PHI-3.8-24-60 3.8 kilowatt-hour 24 Volt DC Lithium Ferro Phosphate (Lithium-ion) Battery. The store will not work correctly when cookies are disabled. Never pay more than \$399 for shipping on orders under \$9,999. ...

## Ultimate Guide: Comparing Top Home Battery Systems

2 ???· Comparing Top Home Battery Systems - Tesla Powerwall, Enphase, FranklinWH & SolarEdge When evaluating top home battery systems, consider the Tesla Powerwall, Enphase, and SolarEdge for their unique features and robust performance. Tesla Powerwall boasts 13.5 kWh capacity with seamless integration, while Enphase offers modular setups with a 10 kWh ...



## How Much Lithium does a Lilon EV battery really need?

assumed to be required per kWh battery capacity. 1 "Lithium Hype or Substance", 28/10/09, Dundee Securities Corporation 2 "Known Lithium Deposits can cover Electric Car Boom", 11/02/10, M. Rosenberg and E. Garcia, Reuters 3 "Lithium Ion Battery Recycling Issues",

Linda Gaines, Argonne National Laboratory,  
21/5/09.



## Different Battery Sizes: Lithium Battery Sizes

Ufine Lithium-Ion battery cell (3.7 V 2000mAh Lithium Ion Battery 654065) provides you with a high energy density. So, it can store maximum energy in a compact and even lightweight package. So, not only this, it has a longer cycle life. Moreover, it has low self-discharge, which helps it maintain power for a longer period.



51.2V 150AH, 7.68KWH

## [SAFETY DATA SHEET](#)

Interstate All-Battery EMERGENCY PHONE: 24 hours - (800) 255-3924 4301 121st Street  
 INFORMATION PHONE: (800) 541-8419, Ext. 6672 or 6663 Urbandale, IA 50323  
 PRODUCT NAME: Lithium Ion  
 SDS NUMBER: LION1 REVISION NUMBER: 2  
 DATE OF PREPARATION/REVISION: February 1, 2018  
 Section 2: HAZARDS IDENTIFICATION

## SimpliPhi PHI-3.8-48-60 48 Volts Lithium Ion Battery

The PHI 3.8 kWh 60 Amp deep-cycle Lithium Ferro Phosphate (LFP) battery is optimized with proprietary cell architecture, power electronics, BMS and assembly methods. It is modular, light-weight and scalable for installations that range ...



## LOOM SOLAR CAML 100 Ah / 48 Volt, 5 kWh Lithium Battery for

...

LOOM SOLAR CAML 100 Ah / 48 Volt, 5 kWh Lithium Battery for Home Inverter . Visit the Loom Solar Store. 2.4 2.4 out of 5 stars 7 ratings. Returns Policy . 3 Year Warranty . Top Brand . 1100/12V with Integrated Lithium-Ion Battery , 3X Fast Charging , ...



### Lithium-ion battery

A lithium-ion or Li-ion battery is a type of rechargeable battery that uses the reversible intercalation of Li + ions into electronically conducting solids to store energy. In comparison with other commercial rechargeable batteries, Li-ion ...



- LiFePO<sub>4</sub> Battery,safety
- Wide temperature: -20~55°C
- Modular design, easy to expand
- The heating function is optional
- Intelligent BMS
- Cycle Life: > 6000
- Warranty:10 years



## How to calculate the Watt Hours (Wh) of a lithium battery

Image 1: A Lithium-ion battery showing Watt-hour (Wh) rating on the case. This is usually stated on the battery itself (see Image 1). If not, you can calculate it as Volts x amp hours (Ah). example 1: an 11.1 volt 4,400 mAh battery - first divide the mAh rating by 1,000 to get the Ah rating - 4,400/1,000 - 4.4ah.

## 48V 3.8kWh\* Commercial Battery Pack , Vanguard Power

Lithium-Ion Battery Packs 48V 3.8kWh \* Commercial Battery 48V 3.8kWh \* Commercial Battery. VIEW MORE Click and drag image to rotate. 48V 3.8kWh \* Commercial Battery 73.8 Ah / 3.80 kWh. Communication Protocols. J1939 (29-bit), CAN Open (11-bit) Discharge Temperature Range-30°C to +70°C. Charging Temperature Range



## Lithium-ion batteries for hybrid electric vehicles and battery electric

On cell level today 120-140 Wh/kg for energy density and up to 800-1500 W/kg peak discharge power density are necessary to reach the requested energy and power on battery level. Until 2020, energy densities up to 200-250 Wh/kg are expected. The cell has to be developed for cell temperatures between - 40 and + 60 °C during operation and - 40 and + 80 ...

## [SimpliPhi PHI 3.8 kWh LFP Battery, 48V](#)

The PHI 3.8(TM) kWh deep-cycle Lithium Ferro Phosphate (LFP) battery is optimized with proprietary cell architecture, power electronics, BMS and assembly methods. It is modular, light-weight and scalable for installations that range ...



## [SimpliPhi\(TM\) 4.9kWh Battery](#)

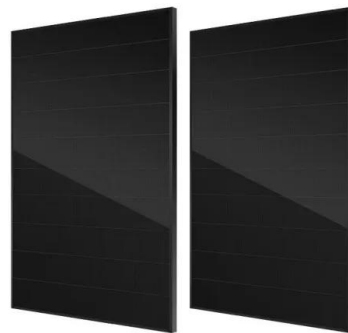
Delivering more efficient, safer and reliable energy storage the SimpliPhi 4.9 kWh Battery



utilizes advanced Lithium Ferro Phosphate (LFP) chemistry. Designed and built with versatility in mind, the SimpliPHI 4.9 kWh Battery seamlessly integrates with all leading inverters, making it an ideal solution for battery replacement, expansion of existing systems or as a new installation. This ...

## Li-ion Battery Market 2025-2035: Technologies, Players

This report provides a comprehensive overview of the Li-ion battery market, analysing market and technology trends, forecasting demand by application and chemistry, and analysing cost and price trends. What is a Li-ion battery? 2.3. Lithium battery chemistries: 2.4. Types of lithium battery: 2.5. Why lithium? 2.6. Primary lithium batteries



**2MW / 5MWh  
Customizable**

## 3.8kwh Solarix Nenergy LiFePo4 Lithium Battery

Introducing the Solarix Nenergy 48V 80Ah LiFePo4 Single Battery Module, a reliable energy storage solution with a total usable energy of 3.8 kWh. Designed for floor standing or wall mount installations, this battery comes equipped with an advanced Battery Management System (BMS) and offers a normal voltage of 48V. With a rated capacity of 80Ah and continuous charging ...

## Generac PWRcell 3.0kW Lithium-Ion Battery Module G0080040

Generac PWRcell 3.0kW Lithium-Ion Battery Module 8004. Look into detailed descriptions, ratings, reviews, pictures at A1 Solar Store. Best prices at A1 Solar Store. Menu; Store. Store; Solar panels . Back. Together they provide 36 kwh of storage! I have them installed outside in two PWRcell battery cabinets. It is a great product. C. Dean



## 48V 3.5kWh Commercial Battery , Vanguard® Commercial Power

Vanguard now offers an 8 year commercial limited warranty for all lithium-ion battery packs. [CLICK HERE](#) for more information. Specifications. 48V 3.5kWh\* Commercial Battery. 67.5 Ah / 3.5 kWh. Communication Protocols. J1939 (29-bit), CAN Open (11-bit) Discharge Temperature Range-20°C to +60°C.

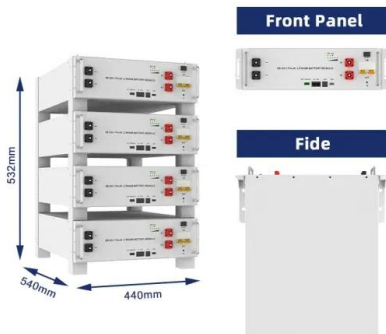
## SimpliPhi Power 3.8kWh 48VDC Lithium Battery , PHI 3.8(TM)

This battery is part of the SimpliPhi Power PHI 3.8-M(TM) series of batteries. SimpliPhi Power 3.8kWh 48VDC Lithium Battery , PHI 3.8(TM) Features & Benefits. Warranty: 10 Years or 10,000 cycles (@ 80% DOD) Battery Capacity: 75 Ah; Nominal Voltage: 51.2 VDC; DC Voltage Range: 48 VDC to 56 VDC; Rated kWh Capacity: 3.8 kWh DC @ 100% DOD / 3.04 kWh



## [3.5kWh SimpliPhi Phi 3.5 Battery 48V](#)

LFP is the safest, most environmentally benign



Lithium Ion chemistry available--no risk of thermal runaway or fire; No AC or toxic liquid cooling - negligible parasitic drain - long cycle life SolarEdge 10 kWh Home Battery SE-BAT-10K1PS0B-02. Type Lithium solar batteries; Delivery on Dec 24-30. \$6,914.38. Add to cart. In stock.

## Complete Guide: Lead Acid vs. Lithium Ion Battery Comparison

In contrast, a lithium-ion battery could range from \$300 to \$500 per kWh. Battery Capacity: Lithium-ion batteries tend to have higher energy density and thus offer greater battery capacity than lead-acid batteries of similar sizes. A lead-acid battery might have a 30-40 watt-hours capacity per kilogram (Wh/kg), whereas a lithium-ion battery



## SimpliPhi Power PHI 3.8KWH Lithium Battery

Batteries are available for in store pick up or must ship via freight The PHI 3.8 kWh 60 Amp deep-cycle Lithium Ferro Phosphate (LFP) battery is optimized with proprietary cell architecture. Click to Enlarge. SimpliPhi Power PHI 3.8KWH Lithium Battery - 48V. SKU. PHI-3-8-48-60. \$2,495.00. 85 lbs. Qty. Add to Quote. Add to Cart. OR. Add to

**Contact Us**

For catalog requests, pricing, or partnerships, please visit:  
<https://www.ian-solar.co.za>