

## Solar Energy South Africa

# PV panels and inverter allocation ratio



## PV panels and inverter allocation ratio

---

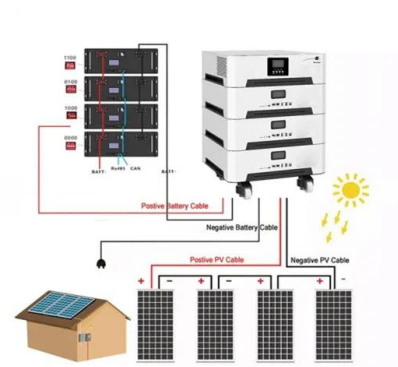


### Solar PV Inverter Sizing , Complete Guide

The DC-to-AC ratio, also known as the Array-to-Inverter Ratio, is the ratio of the installed DC capacity (solar panel wattage) to the inverter's AC output capacity. A typical DC-to-AC ratio ranges from 1.1 to 1.3, with 1.2 being a common value ...

### Solar inverter sizing: Choose the right size inverter

The DC-to-AC ratio -- also known as Inverter Loading Ratio (ILR) -- is defined as the ratio of installed DC capacity to the inverter's AC power rating. It often makes sense to oversize a solar array, such that the DC-to-AC ratio is greater than 1 .



### [Understanding DC/AC Ratio](#)

Note how rarely the array produces above 80% or 90% of the modules' rated DC power. Because the PV array rarely produces power to its STC capacity, it is common practice and often economically advantageous to size the inverter to ...

### Review on Optimization Techniques of PV/Inverter Ratio for Grid-Tie PV

Explanation of the oversizing ratio of the DC solar PV-to-inverter AC power output over a whole day. When there is enough sunlight, the PV array's power output will exceed the inverter's



## Contact Us

---

For catalog requests, pricing, or partnerships, please visit:  
<https://www.ian-solar.co.za>