

Solar Energy South Africa

Photovoltaic grid-connected inverter 450v



Photovoltaic grid-connected inverter 450v

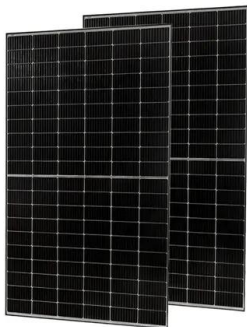


[PV Grid-Connected Inverters](#)

We provide grid-connected PV inverters, wind power converters and relevant technical services such as project consulting, system design, technical support, and other added-value services. Rated grid voltage 400V Grid voltage ...

Intelligent Functions of Deye's Grid-Tie Inverters

The principle of Deye grid-connected inverter against PID is that when the voltage of the DC bus is lower than 50Vdc, the PID module automatically raises the negative voltage of the component, so that the ...



Analysis of DC Link Energy Storage for Single-Phase ...

Single-phase grid-connected photovoltaic (PV) inverters (GCI) are commonly used to feed power back to the utility. However, the inverter output power fluctuates at 100 Hz, which can be seen by the PV panel, and this ...

4.0KW , Single Phase , 1 MPPT , IP41-Hybrid Inverter Special Version-PV

MPPT Voltage Range: 120-450V Max.Output Current: 18A Output type: Single phase

Operating Temperature: -20°C~45°C. Wholesale Photovoltaic Grid-Connected Inverter . And our ...



Contact Us

For catalog requests, pricing, or partnerships, please visit:
<https://www.ian-solar.co.za>