

Solar Energy South Africa

Photovoltaic panel controller fault code



Overview

What are solar charge controller error codes?

Solar Charge Controller Error Codes: Your Comprehensive Guide to Troubleshooting and Fixes - Solar Panel Installation, Mounting, Settings, and Repair. Solar charge controller error codes are a set of messages that indicate specific issues or faults in the controller's operation. The meaning of these codes varies between models and manufacturers.

Why is my solar charge controller error code flashing?

An error code flash on your Solar Charge Controller indicates a problem has occurred. Here's a reference list to help you determine what the problem is and what steps to take. Some errors can be fixed by yourself with some simple troubleshooting. This will help you get your solar charge controller back up and running.

What is error code E02 on solar charge controller?

like e01 on solar controller, e02 is another common fault code, The error message is also point to the load, reconnect or replace the load to fix it. The solar charge controller will display an error code if there is a problem. The solar charge controller error codes are not always the same.

What are solar inverter error codes?

Solar inverter error codes notify you of a situation threatening the normal operation of your solar power system. Many different things can go wrong and disrupt electricity generation from a solar PV system. The inverter will detect it and generate corresponding error codes to notify you.

What are the error codes for Thunderbolt solar charge controllers?

The following are the error codes for Thunderbolt solar charge controllers -
Error Code E01: Battery Under Voltage This error indicates that the battery voltage is below the acceptable threshold. When the battery voltage is too

low, it can damage the battery and affect system performance.

What does error code E04 mean on a solar panel?

Error Code E04: Solar panel over voltage Diagnosis: Check the solar panel voltage with a multimeter. If it exceeds safe levels, the error is valid. Solution: Examine the charge controller for malfunctions. Verify solar panel specifications and replace components if necessary. Error Code E05: Solar panel reverse polarity

Photovoltaic panel controller fault code



5 Solar Charge Controller Problems (What Causes ...

To troubleshoot, check for shading on the panels, faulty wiring connections, or incorrect settings on the charge controller that could be causing the high voltage output. Addressing high solar panel output voltage promptly is ...

Solar Charge Controller Troubleshooting: A ...

Continue reading this guide to find out comprehensive steps for solar charge controller repair. Common Solar Panel Charge Controller Problems. Solar controller problems are varied, but let's take a look at some of the most ...



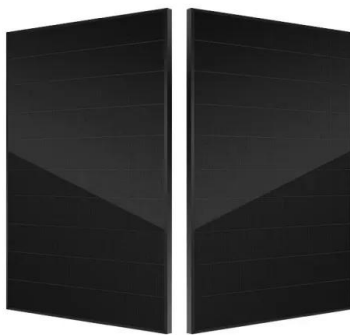
How To Reset Solar Charge Controller (Step-by-Step ...

The hard process required two main supplies. Phillips screwdriver; Paper clip or thin wire; Multimeter; Step 1: In the hard process, first, you stop the power connection by turning off the circuit breakers in the solar ...

Thunderbolt Solar Charge Controller Error Codes

- Solar Expert and Engineer With a background in engineering and a passion for sustainability, ABC is your go-to source for all things solar. Having

worked on solar projects big and small, he brings a practical approach ...



GP-RVC-10-MPPT and GP-RVC-30-MPPT Error Codes

GP-RVC-10-MPPT and GP-RVC-30-MPPT Error Codes. The main screen has a section at the bottom (indicated in the images below) to indicate either the charge state if the controller is charging normally or fault ...

Solar Charge Controller Error Codes: Your ...

Solar charge controller error codes are a set of messages that indicate specific issues or faults in the controller's operation. The meaning of these codes varies between models and manufacturers. Check your device's ...



 TAX FREE    


ENERGY STORAGE SYSTEM

Product Model
HJ-ESS-215A(100KW/215KWh)
HJ-ESS-115A(50KW 115KWh)

Dimensions
1600*1280*2200mm
1600*1200*2000mm

Rated Battery Capacity
215KWH/115KWH

Battery Cooling Method
Air Cooled/Liquid Cooled



Common Solar Inverter Error Codes & Solutions

Inverter error codes are generated and displayed by inverters to notify that something wrong can disrupt the normal working of the solar PV system. The problem can be with the inverter itself, other parts of the solar system, or ...

Contact Us

For catalog requests, pricing, or partnerships, please visit:
<https://www.ian-solar.co.za>