

Solar Energy South Africa

Photovoltaic panel middle box



Overview

A PV junction box is attached to the back of the solar panel (TPT) with silicon adhesive. It wires the (usually) 4 connectors together and is the output interface of the solar panel.

With the use of a junction box, it becomes easy to connect the solar panel to array. Usually cables with MC4 / MC5 connectors at the end are used. A good junction box keeps corrosion at the terminals to a minimum.

Most photovoltaic junction boxes have diodes. The function of the diodes is to keep the power flow going in one direction, and prevent power from feeding back into the panels when there's no sunshine. A quality PV junction box is.

How do I choose a solar panel junction box?

The junction box should be designed to work with the specific type of solar panel for which it was intended. It should also be compatible with charge controllers, inverters, and other components in the solar panel system. When using a solar panel junction box, it is paramount to prioritize safety considerations.

What is a solar junction box?

Solar junction boxes are protective enclosures that house electrical components for combination, connection, and termination for photovoltaic systems. They are also referred to as PV junction boxes and module junction boxes. A junction box protects the electrical connections of the solar panel from environmental conditions.

What is a PV junction box?

A photovoltaic (PV) junction box is an important part of the solar panels. The junction box is an enclosure on the module where the PV strings are electrically connected. The majority of junction box manufacturers are nowadays based in China. How is the junction box connected to the solar panel?

.

Should a solar panel junction box be IP rated?

If the solar panel will be installed in a harsh environment with high exposure to dust and moisture, a junction box with a high IP rating can provide extra protection against potential damage and failure. The junction box should be designed to work with the specific type of solar panel for which it was intended.

Can a solar panel be connected without a junction box?

Without a junction box for solar panels, it is likely impossible to facilitate the safe transfer of electricity from the panel to the inverter or battery system. Therefore, it is not recommended to connect a solar panel directly to a load without a junction box.

What are the warning tips when using a solar panel junction box?

Some of the warning tips when using a solar panel junction box include: Do not open the junction box: The junction box is designed to be sealed and should not be opened by anyone except a qualified technician. Attempting to open the box can be dangerous as it may expose live electrical components, increasing the possibility of electric shocks.

Photovoltaic panel middle box



[Functional solar panel mounting systems](#)

Products. Pitched roof: Tiles, fibre cement, etc. VS+ Universal pitched roof system for PV mounting on all roofs; RS 1 Universal clamp for solar modules and middle and end clamps; LC 1 Assembly of glass-glass solar modules with LC ...

The Complete Guide for Solar Panel Connectors

Solar panels come with wires connected on one end to the junction box while on the other to a solar panel connector. The solar panel connector is used to interconnect solar panels in PV installations. Their main ...



Solar Panel Junction Boxes: Enhancing Efficiency and ...

Solar panel junction boxes play a crucial role in optimally performing and protecting photovoltaic (PV) systems. As a vital component of solar panels, junction boxes provide electrical connections, safeguard against ...

What is Array Junction Box (AJB) in solar PV modules?

An Array Junction Box, AJB, is used to connect the photovoltaic strings in parallel. The combined DC power is fed to the photovoltaic inverter. It

includes photovoltaic string protection, overvoltage protection and a DC output ...

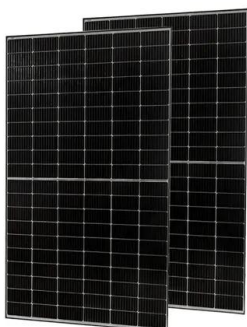


Comprehensive Guide for Solar Panel Mounting ...

Solar panel mounts come in various forms, each designed to meet specific requirements and environmental conditions. From fixed mounts offering stability and simplicity to tracking mounts that follow the sun's ...

What Is Solar Panel Junction Box? (Detailed Guide)

A solar panel junction box is a critical component of any solar energy system, allowing the safe connection between the photovoltaic (PV) panels and the rest of the electrical system. This device is designed to provide ...



11 Common Solar Panel Defects and How to Avoid ...

A junction box at the back of a solar panel is the key interface to conduct electricity to the outside. If water or dust seeps into the junction box enclosure, the bypass diodes inside can become short-circuited and burn out. ...

Contact Us

For catalog requests, pricing, or partnerships, please visit:
<https://www.ian-solar.co.za>