

Solar Energy South Africa

Photovoltaic panels have inconsistent angles



Photovoltaic panels have inconsistent angles

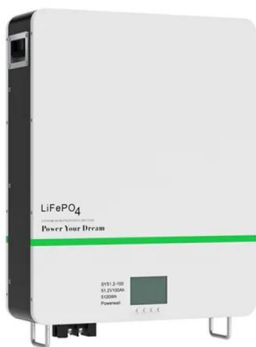


What Direction and Angle Should Solar Panels Face in ...

Orientation: A south-facing roof is generally considered ideal for maximizing solar energy production. East and west-facing roofs can also be suitable but may have slightly reduced efficiency. Tilt: A solar panel tilt angle ...

What's the best angle and direction for solar panels?

The best direction for a solar panel system. To make sure the solar panels are pointing towards the sun for the majority of the day, UK solar panel owners should have their panels facing southwards. Again, this rule ...



The Impact of Installation Angle on the Wind Load of Solar Photovoltaic ...

Therefore, optimal installation methods include installing the panel facing the wind at angles of 30° and 45°, or installing it facing away from the wind at a 60° angle, to ...

The best angle and direction for solar panels in the UK

Unlike the slight regional variation in optimum angles, the best direction remains constant across the country, according to the MCS. If your

roof has a south-facing section, your installer should prioritise using it, but if not, ...

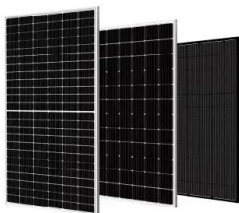


Optimal Tilt Angle Determination for PV Panels Using ...

This study proposes a method for harnessing maximum output from photovoltaic (PV) panels throughout the year by determining the optimal tilt angle. The investigation is performed on real-time solar PV panels of 5 kWp ...

Understanding Solar Panel Voltage for Better Output

Sunlight is key! Sunlight intensity and angle play a role in the maximum power point (MPP) voltage of your solar panel. More sunlight, better angles, and more voltage. Temperature Effects on Solar Panel Voltage. Did ...



Best Angle & Direction for Solar Panels UK: November ...

The best angle for solar panels in the UK is between 30° and 40°. To ensure that your solar panels can produce energy optimally, they should be installed on a south-facing part of your roof. Solar panel angle and ...

What Happens if Solar Panels Aren't Tilted Correctly?

Consequences You Will Have If You Failed to Tilted the Solar Panels in Proper Angle. Improperly tilting solar panels leads to a number of detrimental consequences: Lower Total Power Output. Angling solar panels ...



Contact Us

For catalog requests, pricing, or partnerships, please visit:
<https://www.ian-solar.co.za>