

Solar Energy South Africa

Photovoltaic panels planted with Bupleurum



Photovoltaic panels planted with Bupleurum

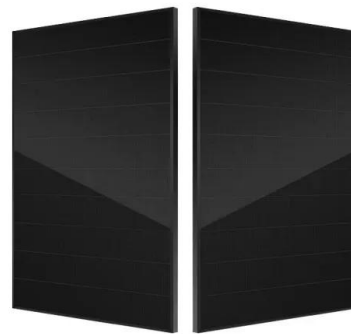


A Guide to Large Photovoltaic Powerplant Design

Designing a photovoltaic power plant on a megawatt-scale is an endeavor that requires expert technical knowledge and experience. There are many factors that need to be taken into account in order to achieve the best ...

What is a solar photovoltaic power plant?

A photovoltaic plant is made up of PV modules and an inverter. Photovoltaic panels are responsible for transforming solar radiation. In turn, the inverter converts direct current into alternating current with characteristics ...



A Guide to Solar Inverters: How They Work & How to ...

For example, with a standard string inverter, if one solar panel produces less energy, all the solar panels in that string will produce less energy. With the power optimizer, each solar panel produces energy, and when that energy reaches ...

Series, Parallel & Series-Parallel Connection of PV ...

Solar Module Cell: The solar cell is a two-terminal device. One is positive (anode) and the other is

negative (cathode). A solar cell arrangement is known as solar module or solar panel where solar panel arrangement is known as ...



Solar Cell: Working Principle & Construction (Diagrams ...

Key learnings: Solar Cell Definition: A solar cell (also known as a photovoltaic cell) is an electrical device that transforms light energy directly into electrical energy using the photovoltaic effect.; Working Principle: The working ...

Effect of Light Heterogeneity Caused by Photovoltaic ...

The large-scale construction of photovoltaic (PV) panels causes heterogeneity in environmental factors, such as light, precipitation, and wind speed, which may lead to microhabitat climate changes



Contact Us

For catalog requests, pricing, or partnerships, please visit:
<https://www.ian-solar.co.za>