

## Solar Energy South Africa

# Pv panel roof Fiji



IP65/IP55 OUTDOOR CABINET

OUTDOOR MODULE CABINET

OUTDOOR 5G BASE STATION CABINET

WATERPROOF



## Pv panel roof Fiji

---



### World estimates of PV optimal tilt angles and ratios of ...

Global solar photovoltaic (PV) installations on rooftops and in power plants are growing rapidly and will grow further as the world transitions from fossil fuels to clean, renewable energy (Jacobson et al., 2017). A critical parameter for installing fixed-tilt panels is the tilt angle, since PV panel output increases with increasing exposure

### RC62: Recommendations for fire safety with PV panel ...

are not intended for single residence dwellings (detached or connected), or to roof-integrated PV panel systems, i.e. those where the PV panels form part of the building envelope. While commercial ground-mounted PV systems are not covered in detail in this guide, the risk control principles discussed are similar.



### Factory-Grade Solar PV Roof Panels ASTRO N5 CHSM72N Bifacial

Advancements in Solar PV Roof Panels Technology- Recent technological strides have led to significant improvements in solar PV roof panels, enhancing their efficiency and cost-effectiveness. Innovations in cell technology and bifacial designs are pioneering a new era in solar energy capture, expanding application scenarios.

## A TECHNO-ECONOMIC EVALUATION OF DOMESTIC ...

DOMESTIC ROOFTOP GRID-CONNECT PV (GCPV) SYSTEMS IN FIJI The panels are roof mounted at an inclination of 180 and an Azimuth angle of 1800. The total number of PV modules in the 2.4kW system is ten (10). Inverter The inverter utilized in the system is the 'SMASunny Boy



## Top Roof Mount Systems Manufacturers Suppliers in Fiji

Some readily available equipment in Fiji includes solar panels, batteries, inverters, and charge controllers. Nevertheless, these suppliers serve a small market and may not have the capacity to supply mega-project equipment. A roof-mounted solar panel system is a type of installing PV modules in your house roof. This type of solar panel

## [Integrated photovoltaic roof SOLROOF](#)

One system: The SOLROOF system consists of integrated FIT VOLT photovoltaic panels, FIT modular roof panels, optimisers and SolarEdge system components. One assembly: Thanks to the modularity of FIT VOLT and FIT panels, the installation is quick and carried out by authorised roofers. One warranty: The roof is covered by a single manufacturer's warranty.



## Solar Type Roof Design: A Comprehensive Guide for Sustainable ...

Solar type roof design refers to the integration of

solar panels into the architecture of a building. This design not only maximizes energy efficiency but also enhances the overall aesthetic appeal of a property. Unlike traditional solar panel installations that sit on top of existing roofs, solar type roof designs incorporate solar technology directly into the roofing ...



## [PV in Cyclones](#)

Solar Panel australian pv association abn 91 006 005 190 apva response to james cook university cyclone testing unit solar panel alert march 2011 background in. with roof areas secured by panels remaining in place and other areas of the roof being blown off Fiji National University. 3 Documents. Go to course. 12. 2)Liquefaction-Induced



## **Top Solar Panel Manufacturers Suppliers in Fiji**

Wholesale Solar Panels For Sale Homeowners and all types of businesses these days are seeking ways to cut down on their power consumption bill and reduce the overall operational cost. For this purpose, solar energy is the best alternative for them to be cost-effective and energy-efficient. In the upcoming decade, energy costs are estimated to become double. Solar panels ...

## [Roof Anchor System for Solar Panels](#)

PV panel anchors are installed and flashed before installing racks and panels. (Source: IBACOS.)  
 Figure 6. Lag-Bolted L Brackets for Mounting PV

Panels to Roof Decking. (Source: Solar Rating and Certification Corporation 2020.) Figure 7. Stanchion Mount for Mounting PV Panels on a Tile Roof. (Source: Davis Energy Group 2015.) Figure 8.



## What are the Standard Sizes of Solar Photovoltaic Panels?

How Many Solar Panels Can Fit on My Roof? In the residential solar market, high-power panels, such as 490W, 535W, and 550W models, are commonly used. These high-efficiency panels help maximize the use of limited rooftop space, increasing the energy yield per square meter. The available space on your roof determines how many panels you can install.

## Top Solar Water Pump Distributors Suppliers in Fiji

Solar water pump definition A solar water pump is a mechanical pump powered by electricity generated using photovoltaic panels. It is popularly referred to as a solar water pumping system because it requires several key components to work. The critical constituents of a functional water pump include; A solar panel array A mechanical DC water pump Photovoltaic cables A fuse ...



## [Top Solar Panel Suppliers in Fiji](#)

Wholesale Solar Panels For Sale Homeowners and all types of businesses these days are seeking ways to cut down on their power



consumption bill and reduce the overall operational cost. For this purpose, solar energy is the best alternative for them to be cost-effective and energy-efficient. In the upcoming decade, energy costs are estimated to become double. Solar panels ...

## Degrees of Separation: How to mount commercial ...

"Rooftop energy density is maximized by fitting more panels on the roof using a 5-degree racking system," said Jonah Coles, product solutions manager, Ecolibrium Solar. "The key to fitting more panels on the roof is to use ...



## Solar system for RHEINZINK standing seam roofing , RHEINZINK

RHEINZINK-PV is a flat-mounted, roof-parallel solar system. The specially developed seam and module clamp is simply attached to the double standing seams. It is important to choose the right panel width. Our range includes: Suitable PV modules for RHEINZINK double standing seam roofs in the centre-to-centre dimensions 530 mm (600 mm belt)

## Photovoltaics: Solar PV Roof Panel Systems

Solar PV roof panels are a great way to utilise flat roof space. Producing 310 watt-peak per panel and installed to ensure roof system integrity. 01473 257671 Email Contact us Members Area.

Open menu. Flat Roof Solutions. New Build solutions; Refurbishment solutions; Reinforced Bitumen Membrane systems;



## Top PV Cable Manufacturers Suppliers in Fiji

All current PV wires are fitted with MC4 1500V locking connectors and are compatible with nearly all types of solar panels on the market. The listed PV wires are flame retardant (flame rated VW-1), moisture resistant, sunlight resistant, and crush resistant. The solar cables on offer are used to connect solar panels and other solar systems.

## Top Rail Mounting System Suppliers in Fiji

A rail mounting system is the most common roof-mounted structure type that offers a versatile option for mounting solar panels on low and steep-sloped roofs. Usually, the system consists of a set of aluminum module support rails and other necessary components that attach the rails to the roof attachment and to attach the PV modules to the rails.



## Roof-Mounted Solar PV Panels - Part 1: Structural Code

"R324.4.1 Roof live load. Roof structures that provide support for photovoltaic panel systems shall be designed for applicable roof live load..."

"R907.2 Wind Resistance. Rooftop-mounted photovoltaic panel or modules systems shall be installed to resist the component and cladding loads specified in Table R401.2(2)."



## Buy solar panel roof Online in Fiji at Low Prices at desertcart

Online solar panel roof Shopping Store in Fiji  
 Renogy 100 Watt 12 Volt Solar Panel Starter Kit with 100W Monocrystalline Solar Panel + 30A PWM Charge Controller + Adaptor Kit + Tray Cables + Mounting Z Brackets for RV Boats Trailer Off-Grid System



## [Top Solar Water Pump Suppliers in Fiji](#)

Solar water pump definition A solar water pump is a mechanical pump powered by electricity generated using photovoltaic panels. It is popularly referred to as a solar water pumping system because it requires several key components to work. The critical constituents of a functional water pump include; A solar panel array A mechanical DC water pump Photovoltaic cables A fuse ...

## Roof Tiles

Sustainability and energy independence are crucial in modern home design. Our photovoltaic roof tiles are tailored to meet your specific power needs while ensuring durability, protection, and energy efficiency. Designed to blend seamlessly

with residential roofs, these tiles offer a perfect combination of high performance and architectural appeal, enhancing both functionality and ...



## The Ultimate Guide to Solar Panel Roof Mounts: Installation and

Maximizing the Benefits of Solar Panel Roof Mounts. When it comes to maximizing the benefits of solar panel roof mounts, there are several strategies to consider. By optimizing panel placement and orientation, incorporating energy storage systems, and taking advantage of incentives and rebates, you can make the most of your solar power investment.

### DMEGC releases 22.9%-efficient lightweight bifacial TOPCon solar panels

2 ???· DMEGC Solar says its new solar panels weigh only 15.3 kg and have a power output of up to 270 W. The new products combine a double-glass design with TOPCon cell technology.



## Fire Safety Guideline for Building Applied Photovoltaic

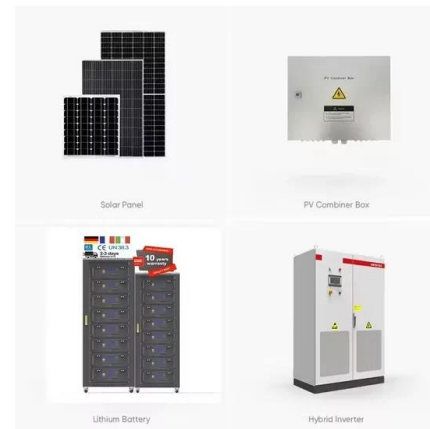
Installing a PV system on the roof of a building introduces new fire risks to the building or damages to the system. First, the PV installations have been shown to increase the chances for o



Generali: Photovoltaic panels on roofs and fire risks (in French) o FM Global: o FM 4478 (Update), Roof-Mounted Rigid Photovoltaic Module Systems

## Solar Energy for Power Generation in Fiji: History, Barriers and

Fiji has good solar insolation. Using 1983-2005 NASA data (NASA 2017), average annual insolation on a horizontal surface in Fiji is 5.4 kWh/m<sup>2</sup>/day with a standard deviation of 0.6 kWh/m<sup>2</sup>/day (see Fig. 8.1). During the mid-year, solar insolation reaches the lowest point of 4.0 kWh/m<sup>2</sup>/day while high solar insolation (around 6 kWh/m<sup>2</sup>/day) occurs ...



## Contact Us

For catalog requests, pricing, or partnerships, please visit:  
<https://www.ian-solar.co.za>