

Solar Energy South Africa

Relationship between solar power generation and brightness



Overview

Does light intensity affect the power generation performance of solar cells?

The experimental results show that the open circuit voltage, short-circuit current, and maximum output power of solar cells increase with the increase of light intensity. Therefore, it can be known that the greater the light intensity, the better the power generation performance of the solar cell. 1. Introduction.

How does light affect solar cells?

Solar cells experience daily variations in light intensity, with the incident power from the sun varying between 0 and 1 kW/m². At low light levels, the effect of the shunt resistance becomes increasingly important.

How do different angles affect the performance of solar cells?

Different angles and different light intensities have different effects on the performance of solar cells. When the light is radiated to the photovoltaic cell material, some of the incident light is reflected or scattered on the surface, and some of it is absorbed by the photovoltaic cell.

Do light intensities affect the power generation performance of photovoltaic cells?

The annual total power generation and heat gain are analyzed as experimental research data, and the investment cost of research methods for the influence of different light intensities on the power generation performance of photovoltaic cells is carried out.

How does light intensity affect the trough solar photovoltaic cell?

It is concluded that when the light intensity gradually increases, the open circuit voltage and short-circuit current of the trough solar photovoltaic cell gradually increase; the open circuit voltage and short-circuit current of the trough solar photovoltaic cell gradually increase.

What factors affect solar power generation?

It identifies essential variables, such as solar radiation, relative humidity, and module surface temperature, that influence power generation. Regression equations were derived for PV and PVT. Results show that solar radiation plays a significant role in winter, while multiple factors affect summer power generation.

Relationship between solar power generation and brightness



The Relationship Between Sun Angle and ...

Understanding the relationship between sun angle and solar radiation intensity can help in designing and optimizing PV systems for improved performance and efficiency. This ensures that the PV modules receive the ...

Relationship between weather forecast variables and solar power

Download scientific diagram , Relationship between weather forecast variables and solar power generation (a) Continuous variables, (b) Categorical variables from publication: PVHybNet: A ...



Understanding the Light-Intensity Dependence of the ...

In organic solar cells, bimolecular recombination is a key factor limiting the device performance and creating the need for characterization. Light-intensity-dependent short-circuit current density measurements are a ...

Effects of different environmental and operational ...

...

The sun is the source of solar energy and

delivers 1367 W/m² solar energy in the atmosphere. 3 The total global absorption of solar energy is nearly 1.8×10^{11} MW, 4 which is enough to meet the current power demands ...

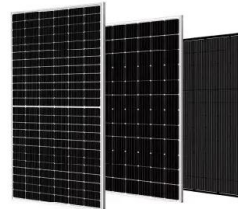


Effect of tilt angle on the performance and electrical parameters of ...

Solar electricity generation depends on many factors, among which module tilt is a crucial one. Operative interception of solar irradiance plays a vital role in the performance of ...

Effect of various parameters on the performance of ...

The optimum output, energy conversion efficiency, productivity, and lifetime of the solar PV cell are all significantly impacted by environmental factors as well as cell operation and maintenance, which have an impact on ...



Contact Us

For catalog requests, pricing, or partnerships, please visit:
<https://www.ian-solar.co.za>