

## Solar Energy South Africa

# Sunny tripower storage x 30 Macao



## Sunny tripower storage x 30 Macao

---



### Sunny Tripower Storage X

Caractéristiques techniques Sunny Tripower Storage X 30 Sunny Tripower Storage X 50  
 Raccordement de la batterie (DC) Puissance DC max. 30600 W 51000 W Plage de tension DC 200 V à 980 V Courant d'entrée max. utile (I DC, max) 150 A Type de batterie Li-Ion  
 Raccordement au réseau électrique public (AC)

### Sunny Tripower 3.0-6.0???

Sunny Tripower X; Sunny Highpower PEAK3; Sunny Tripower CORE1; Sunny Tripower CORE2; Sunny Boy 1.5 / 2.0 / 2.5; ??????. ?? ??????; Sunny Boy Storage 3.7 / 5.0 / 6.0; Sunny Boy Storage 2.5; Sunny Island 4.4M / 6.0H / 8.0H; Sunny Island 4548-US / 6048-US; Sunny Central Storage UP; Sunny Central Storage 1900 / 2200 / 2475



### Sunny Tripower X powered by ennexOS

Sim, o SMA Sensor Module está disponível como acessório para o Sunny Tripower X. Aplicam-se as seguintes restrições de utilização: O MD.SEN-40 é compatível com o Sunny Tripower X 12 / 15 / 20 / 25 a partir da versão de hardware A3.

### Sunny Tripower X

SUNNY TRIPOWER STORAGE X SUNNY PORTAL  
 powered by ennexOS UTILITY GRID PV MODULES  
 UTILITY METER FOR BILLING PURPOSES ROUTER

PV INVERTER BATTERY INVERTER LOAD  
()CONTROLLABLE (W/H/D) 728 mm / 762 mm /  
266 mm (28.7 in / 30.0 in / 10.5 in) Weight 35 kg  
(77 lbs) Operating temperature range -25°C to  
+60°C (-13°F to +140°F) ...

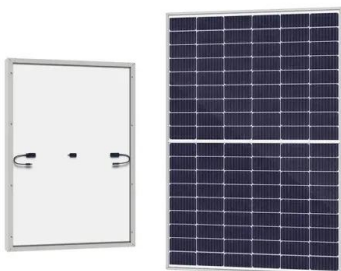


## SMA Commercial Storage Solution

Onduleur-chargeur SMA Sunny Tripower Storage X (STPS 30-20, STPS 50-20) Système de stockage commercial SMA Commercial Storage (Storage 30-20, Storage 50-20) SMA Commercial Energy Meter. Assistance complète pour le système grâce à l'offre de services étendue de SMA. Vers la fiche technique.

## Betriebsanleitung

o STP 12-50 (Sunny Tripower X 12) ab Firmware-Version 3.06.15.R o STP 15-50 (Sunny Tripower X 15) ab Firmware-Version 3.06.15.R o STP 20-50 (Sunny Tripower X 20) ab Firmware-Version 3.06.15.R o STP 25-50 (Sunny Tripower X 25) ab Firmware-Version 3.06.15.R 1.2 Zielgruppe Dieses Dokument ist für Fachkräfte und Endanwender bestimmt.



## Sunny Tripower X

Oui, le SMA Sensor Module est disponible en tant qu'accessoires pour le Sunny Tripower X. Les restrictions d'utilisation suivantes s'appliquent : À partir de la version de matériel A3, le MD.SEN-40 est compatible avec le Sunny Tripower X 12/15/20/25.

## [Sunny Tripower X , SMA South East Asia](#)

The new Sunny Tripower X is the innovative system solution for commercial and large home PV systems. The integrated System Manager function with direct access to Sunny Portal powered by ennexOS monitors up to five SMA inverters and one energy meter.

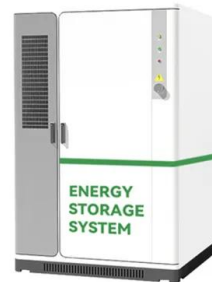


## [Sunny Tripower X powered by ennexOS](#)

Sim, o SMA Sensor Module está disponível como acessório para o Sunny Tripower X. Aplicam-se as seguintes restrições de utilização: O MD.SEN-40 é compatível com o Sunny Tripower X 12 / 15 / 20 / 25 a partir da versão de ...

## **SMA SUNNY TRIPOWER STORAGE X 30 Instrucciones Breves**

Ver y descargar SMA SUNNY TRIPOWER STORAGE X 30 instrucciones breves online. SUNNY TRIPOWER STORAGE X 30 inversores Descargar manual en PDF. También por: Sunny tripower storage x 50, Stps30-20, Stps50-20.



## [Quick Reference Guide](#)

o STPS30-20 (Sunny Tripower Storage X 30) from firmware version 3.00.62.R o STPS50-20 (Sunny Tripower Storage X 50) from firmware version 3.00.62.R 1.2 Target Group The tasks described in this document must only be performed by qualified persons. Qualified persons must have the following skills: o Knowledge of how to safely disconnect SMA

## SMA Sunny Tripower-X 30-US-50 Inverter with ennexOS

Energy Storage Systems (ESS) ESS Units; ESS Accessories & Components; Batteries & Battery Storage. Deep Cycle Batteries; Lithium Batteries For Solar; SMA Sunny Tripower-X 03-30-1000-2-50. This inverter can only ship via freight truck. It can NOT ship via UPS or USPS. Please email us or give us a call if you have any questions.



## SMA Sunny Tripower-X 30-US-50 Inverter with ...

Energy Storage Systems (ESS) ESS Units; ESS Accessories & Components; Batteries & Battery Storage. Deep Cycle Batteries; Lithium Batteries For Solar; SMA Sunny Tripower-X 03-30-1000-2-50. This inverter can only ship via ...

## [SMA Commercial Storage Solution](#)

The SMA Commercial Storage Solution offers comprehensive services over the entire product life cycle. In addition to the hardware (battery inverter, battery, e-meter), this also includes energy management, training courses, design service, commissioning service, a 10-year warranty and on-site service for the entire system including any other SMA components such as PV ...



## SMA SUNNY TRIPOWER STORAGE X 30 Schnelleinstieg



Ansicht Und Herunterladen Sma Sunny Tripower Storage X 30 Schnelleinstieg Online. Sunny Tripower Storage X 30 Wechselrichter Pdf Anleitung Herunterladen. Auch Für: Sunny Tripower Storage X 50, Stps30-20, Stps50-20.

## Sunny Tripower Storage X

Dati tecnici Sunny Tripower Storage X 30 Sunny Tripower Storage X 50 Collegamento batteria (CC) Potenza CC massima 30600 W 51000 W Range di tensione CC da 200 V a 980 V Corrente d'ingresso max utilizzabile (I CC max) 150 A Tipo di batteria Ioni di ...

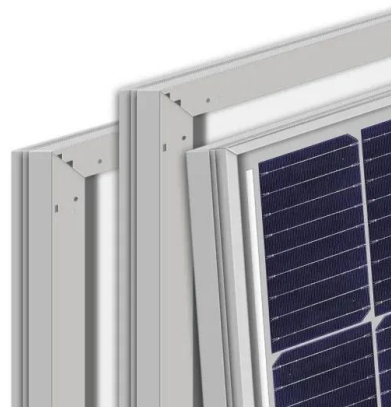


## SUNNY TRIPOWER X 20-US / 25-US / 30-US

SUNNY TRIPOWER X 20-US / 25-US / 30-US. Information on this Document. Validity. Target Group. Content and Structure of this Document. Levels of Warning Messages. Data Storage Capacity. Efficiency. Protective Devices. Climatic Conditions. Equipment. Torques. Accessories. Compliance Information.

## Discover now the Sunny Tripower X!

The MD.SEN-US-40 is compatible with the Sunny Tripower X 20-US / 25-US / 30-US with hardware version A2 or newer. The hardware version can be found on the packaging label of the SMA Sensor Module. If the SMA Sensor Module is used in the Sunny Tripower X, you may only connect signal sources (e.g., irradiation sensors) with



current signals to the

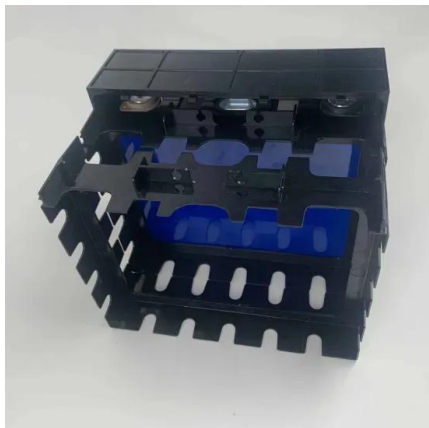
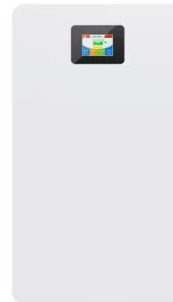


## [Sunny Tripower Storage X](#)

Dados técnicos Sunny Tripower Storage X 30  
 Sunny Tripower Storage X 50 Ligação da bateria  
 (CC) Potência CC máx. 30600 W 51000 W  
 Intervalo de tensão CC 200 V a 980 V Corrente  
 máx. de entrada utilizável (I DC máx) 150 A Tipo  
 de bateria lões de lítio Ligação à rede (CA)  
 Potência atribuída com tensão nominal 30000 W  
 50000 W

## [SMA Commercial Storage Solution](#)

Technische Daten Sunny Tripower Storage X 30  
 Sunny Tripower Storage X 50 Batterieanschluss  
 (DC) Max. DC-Leistung 30600 W 51000 W DC-  
 Spannungsbereich 200 V bis 980 V Max.  
 nutzbarer Eingangsstrom (I DC max) 150 A  
 Batterietyp Li-ion Netzanschluss (AC)  
 Bemessungsleistung bei Nennspannung 30000 W  
 50000 W Max. AC-Scheinleistung 30000 ...



## [SMA Commercial Storage Solution](#)

Inverter per batteria SMA Sunny Tripower  
 Storage X (STPS 30-20, STPS 50-20) SMA  
 Commercial Storage (Storage 30-20, Storage  
 50-20) SMA Commercial Energy Meter. Supporto  
 completo del sistema grazie all'ampia gamma di  
 servizi SMA. Vai alla scheda tecnica. I vantaggi.

## **SMA Sunny TriPower X 30kW Grid-Tie 3-Phase Inverter ...**

Sunny Tripower X is the new innovative inverter  
 solution for commercial PV systems. Providing  
 three MPP trackers with SMA ShadeFix string

optimization technology for optimal PV array design flexibility and maximum energy yields.



## Sunny Tripower X: Wechselrichter jetzt entdecken!

Ja, das SMA Sensor Module ist als Zubehör für den Sunny Tripower X verfügbar. Es gelten folgende Einsatzbeschränkungen: Das MD.SEN-40 ist ab Hardware-Version A3 mit dem Sunny Tripower X 12 / 15 / 20 / 25 kompatibel.

## SMA Commercial Storage Solution

Technische gegevens Sunny Tripower Storage X  
 30 Sunny Tripower Storage X 50  
 Batterijaansluiting (DC) Max. DC-vermogen  
 30600 W 51000 W DC-spanningsbereik 200 V tot  
 980 V Max. bruikbare ingangsstroom (I DC max)  
 150 A Batterijtype Li-ion Netaansluiting (AC)  
 Opgegeven vermogen bij nominale spanning  
 30000 W 50000 W Max. schijnbaar AC ...



## SUNNY TRIPOWER STORAGE 60

The new Sunny Tripower Storage 60 is the perfect solution for commercial and industrial storage solutions. Its modularity guarantees maximum flexibility up to the MW scale. Customers in the commercial and industrial segment profit from extraordinary versatility at low costs. Whether Peak Load Shaving, Time of

Use-Tariffs (ToU) and the

## 12.8V 200Ah



### [Sunny Tripower Storage X](#)

Technische Daten Sunny Tripower Storage X 30  
 Sunny Tripower Storage X 50 Batterieanschluss  
 (DC) Max. DC-Leistung 30600 W 51000 W DC-  
 Spannungsbereich 200 V bis 980 V Max.  
 nutzbarer Eingangsstrom (I DC max) 150 A  
 Batterietyp Li-ion Netzanschluss (AC)  
 Bemessungsleistung bei Nennspannung 30000 W  
 50000 W Max. AC-Scheinleistung 30000 ...



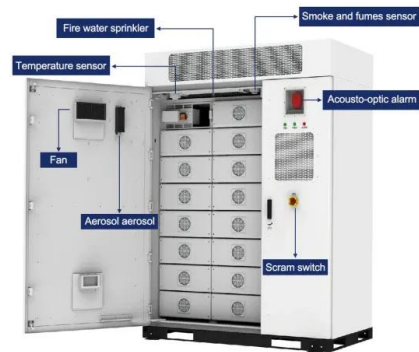
### [Sunny Tripower Storage X](#)

Technical data Sunny Tripower Storage X 30  
 Sunny Tripower Storage X 50 Battery connection  
 (DC) Max. DC power 30600 W 51000 W DC  
 voltage range 200 V to 980 V Max. usable input  
 current (I DC, max) 150 A Battery type Li-ion Grid  
 connection (AC) Rated power at nominal voltage  
 30000 W 50000 W Max. apparent AC power  
 30000 VA 50000 VA

### [Sunny Tripower X, SMA Solar](#)

Yes, the SMA Sensor Module is available as an  
 accessory for the Sunny Tripower X. The  
 following restrictions on use apply: The  
 MD.SEN-40 is compatible with the Sunny  
 Tripower X 12 / 15 / 20 / 25 with hardware  
 version A3 or newer. The hardware version can  
 be found on the packaging label of the SMA

Sensor Module.



## Contact Us

---

For catalog requests, pricing, or partnerships, please visit:  
<https://www.ian-solar.co.za>