

Solar Energy South Africa

Tyg energy systems South Georgia and South Sandwich Islands



Overview

South Georgia and the South Sandwich Islands (SGSSI) is a remote island territory of the United Kingdom, located in the South Atlantic Ocean. It consists of 39 islands and islets, with a total area of 700 km² and a population of 311. The territory is administered by the United Kingdom and is a member of the Commonwealth of Nations.

Tyg energy systems South Georgia and South Sandwich Islands



South Georgia and the South Sandwich Islands Tourist Visa

...

If you're considering exploring South Georgia and the South Sandwich Islands beyond the usual tourist spots, our comprehensive guide on South Georgia and the South Sandwich Islands tourist visa offers deeper insights and broader options for travelers of different nationalities. For those transiting through other countries en route to South

South Georgia and The South Sandwich Islands

South Georgia and The South Sandwich Islands : Stamps : Years List : Colnect. Buy, sell, trade and exchange collectibles easily with Colnect collectors community. Only Colnect automatically matches collectibles you want with collectibles collectors offer for sale or swap. Colnect collectors club revolutionizes your collecting experience!

HEAT DISSIPATION

Cold aisle containment,
making optimal refrigeration effect:



Fisheries Overview - Government of South Georgia & the South Sandwich

South Georgia & the South Sandwich Islands is at the northern limit of the krill distribution. Krill at South Georgia & the South Sandwich Islands are not self-sustaining but dependent on the northerly movement of krill in the currents of the Southern Ocean from their spawning grounds under the ice in the Antarctic Peninsula and



Weddell Sea.

South Georgia and the South Sandwich Islands

The territory of South Georgia and the South Sandwich Islands was formed in 1985. Argentina raised a territorial claim for South Georgia in 1927 and for the South Sandwich Islands in 1938. Argentina maintained a naval station, Corbeta Uruguay on Thule Island in the South Sandwich Islands from 1976 until 1982 when it was closed by the Royal Navy



[Visitor Sites](#)

A list of 49 approved visitor sites is included as an annex in the Visiting South Georgia. Some approved sites are only suitable for Zodiac cruising and cruise ships carrying in excess of 200 passengers are only permitted to land passengers at certain sites.

Airports near South Georgia and the South Sandwich Islands

Find the travel options from Nearby airports to South Georgia and the South Sandwich Islands that best suit you. Rome2Rio. Airports near South Georgia and the South Sandwich Islands. Find Transport to South Georgia and the South Sandwich Islands. Travel from. To. See all options. Search accommodation with Expedia. Duration: 1h 45m:



South Georgia and the South

Sandwich Islands

Closeup map of the South Sandwich Islands
 NASA satellite photograph of Montagu Island.
 The South Sandwich Islands comprise 11 mostly volcanic islands (excluding tiny satellite islands and offshore rocks), with some active volcanoes. They form an island arc running north-south in the region 56°18'-59°27'S, 26°23'-28°08'W, between about 350 and 500 mi (300 and 430 nmi; ...



South Sandwich Islands , Volcanic, Map, & Facts , Britannica

South Sandwich Islands, group of actively volcanic islets in the South Atlantic Ocean, north of the Weddell Sea and 470 miles (760 km) southeast of the island of South Georgia. They extend for 190 miles (305 km), occupy 120 square miles (310 square km), and are covered with glaciers. Until 1985 they were included within the Falkland Islands (Islas ...



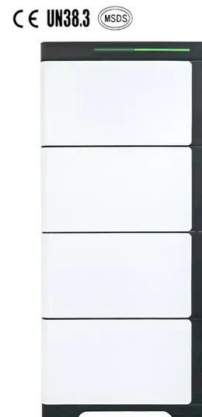
South Georgia and South Sandwich Islands Quiz

Can you complete the fact file for the South Georgia and South Sandwich Islands? By Manicgamer04. 3m. 10 Questions. 40 Plays 40 Plays 40 Plays. Comments. Comments. Give Quiz Kudos. Give Quiz Kudos-- Ratings. PLAY QUIZ Score. Numerical. Percentage. 0/10. Timer. Default Timer. Practice Mode. Quiz is untimed.

South Georgia and South Sandwich Islands

Together, South Georgia and the South Sandwich Islands form part of the Scotia Arc, which

extends from the tip of South America to Antarctica (and also includes the South Shetland and South Orkney Islands, though these are not part of the British dependency). The island of South Georgia is 105 mi (170 km) long, and about 25 mi (40 km) wide.



- LiFePO₄
- Wide temp: -20°C to 55°C
- Easy to expand
- Floor mount&wall mount
- Intelligent BMS
- Cycle Life:≥6000
- Warranty :10 years



How to Visit

South Georgia & the South Sandwich Islands are only accessible by sea. There is no visitor accommodation ashore, therefore most people visit by cruise ship or yacht. All visits require a visit permit. Visit permit applications for both commercial and private vessels are submitted by the vessel owners or operators.

??????????????

????????????????

????????????(?:South Georgia and the South Sandwich Islands,???SGSSI)????????????????????
 ?????????????????,????????????????????????????????,????
 ?????,????3592?????
 ?????????????????700??,311????????,?????????????
 ...



[South Georgia - A Visitor's Guide](#)

Our film 'South Georgia - A Visitor's Guide' is compulsory viewing for all visitors to South Georgia. Its aim is to inspire visitors to respect and protect the island and its wildlife during their visit. Narrated by Sir David Attenborough, and produced by leading wildlife film-makers Silverback Films, the story showcases the incredible story of South Georgia's ecological

recovery

Marine Protected Area - Government of South Georgia & the South ...

The South Georgia and South Sandwich Islands Marine Protected Area (SGSSI-MPA) is one of the world's largest MPAs, covering an area of 1.24 million km² (an area 5 x larger than the UK). It was established in 2012 with the aim of conserving the rich marine biodiversity within the Territory's maritime zone and provides a framework for our



??????

?????(?:South Georgia and The South Sandwich Islands,?:SGSSI),????????????,????????????????56 °18?-59°30????26°-28°30???,????????????????2,000????????????????????,??????310????

Boundaries: South Georgia and the South Sandwich Islands

The ultimate goal of the Argentinian forces was to annex the South Sandwich Islands, South Georgia, and the Falklands. Despite these plans, however, the British moved in to re-take the territory, and on June 20, 1982, the British were successful in defeating the invading Argentine forces. By 1985, both South Georgia and the South Sandwich

Nominal Capacity
280Ah
 Nominal Energy
50kW/100kWh
 IP Grade
IP54



The future of the South

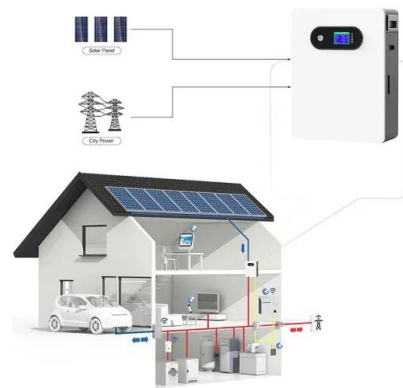


Georgia and South Sandwich Islands ...

The South Georgia and South Sandwich Islands MPA (hereafter, SGSSI MPA) 4 covers the entirety of the Maritime Zone, extending to 200 nm. The MPA is one of the world's largest, covering an area of 1.24 million km². It was established with the aim of conserving the rich marine biodiversity and for providing a framework for marine environmental

South Georgia and the South Sandwich Islands

South Georgia and the South Sandwich Islands. Published: September 2018. Citation: UNEP-WCMC. 2018, A review of terrestrial protected areas: South Georgia and the South Sandwich Islands. Cambridge, UK. The UN Environment World Conservation Monitoring Centre (UNEP-WCMC) is the specialist biodiversity assessment centre of



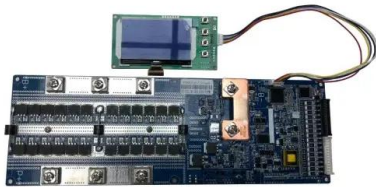
South Georgia & the South Sandwich Islands Stamps

The Antarctic Treaty of 1962 resulted in a separation of the British Antarctic Territory from the UK Dependencies. South Georgia then received its first stamps. In 1985 the Falkland Islands Dependencies ceased to exist and South Georgia & the South Sandwich Islands came into existence as a UK overseas territory.

South Georgia and the South Sandwich Islands

South Georgia and South Sandwich Islands are to become a Terrestrial Protected Area which would further protect the most diverse populations of

seabirds and marine mammals on Earth, including 25% of the world's gentoo penguins. r/UpliftingNews. r/UpliftingNews.



South Georgia and the South Sandwich Islands

South Georgia South Georgia and its associated smaller offshore islands, islets and stacks lie between the parallels of 53°00'S and 55°00'S, and between the meridians of 34°30'W and 42°00'W. These islands are very isolated, lying about 870 miles (1,400 km) east-south-east of the Falkland Islands, 963 miles (1,550 km) north-east of

South Georgia and the South Sandwich Islands

British overseas territory in the Southern Atlantic Ocean. This page was last edited on 27 November 2024, at 11:44. All structured data from the main, Property, Lexeme, and EntitySchema namespaces is available under the Creative Commons CC0 License; text in the other namespaces is available under the Creative Commons Attribution-ShareAlike License; ...



????????????

????????????(?: South Georgia and the South Sandwich Islands,??? SGSSI)????????????????????
 ?????????????????????,????????????????????
 ?????????????????,????????????,????3592? ...



Contact Us

For catalog requests, pricing, or partnerships, please visit:
<https://www.ian-solar.co.za>