

Solar Energy South Africa

What is the appropriate size of photovoltaic panel terminal



**PV / DG
Application**



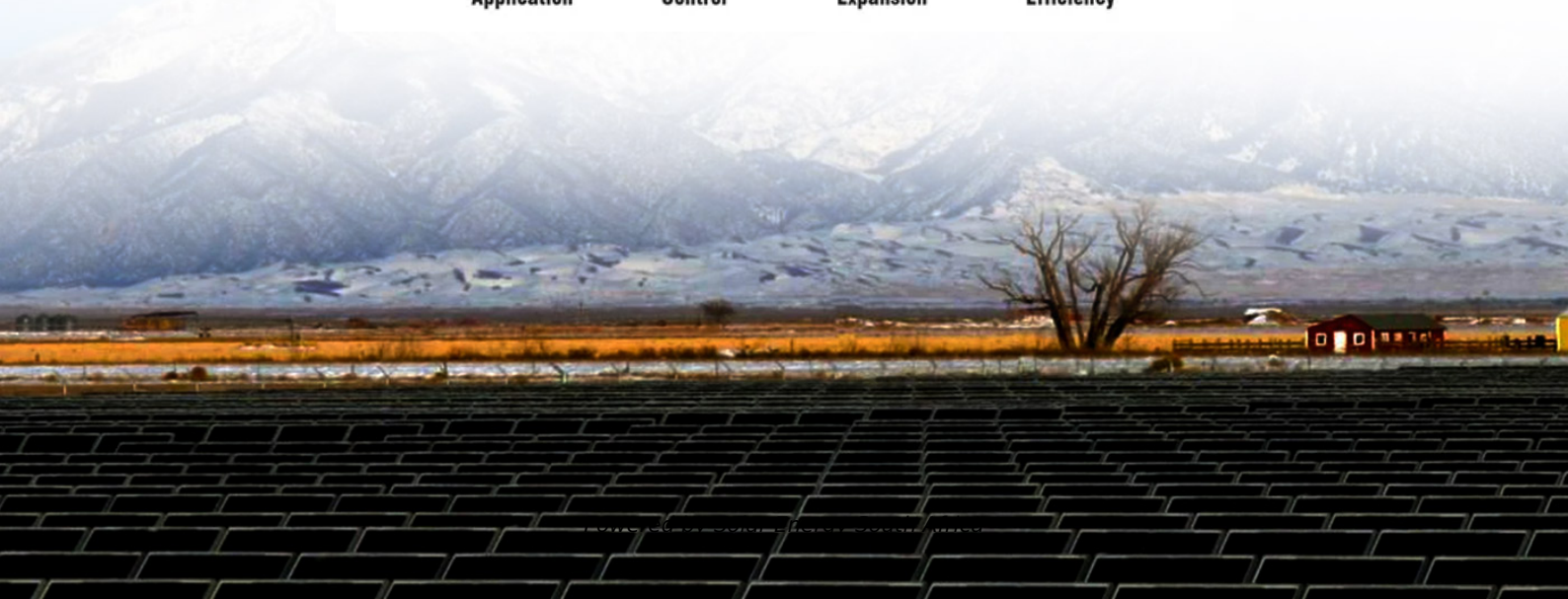
**APP Intelligent
Control**



**Multi-Unit Parallel
Expansion**



**98.8% Max.
Efficiency**



Overview

Before diving into the world of solar panel connectors, you should learn the basics about them. In this section, we explain what they are, their evolution throughout history, and more.

Learning how to use solar panel connectors is extremely important if you own a PV system. In this section, we teach you how to attach a solar.

The best way to get a better understanding of options available is through a table. In this section, we compare each of the most popular solar connectors by listing their technical specs as well. Most solar.

Selecting the right solar panel connector will ensure your PV system works seamlessly for decades. You might perform maintenance.

What is the appropriate size of photovoltaic panel terminal

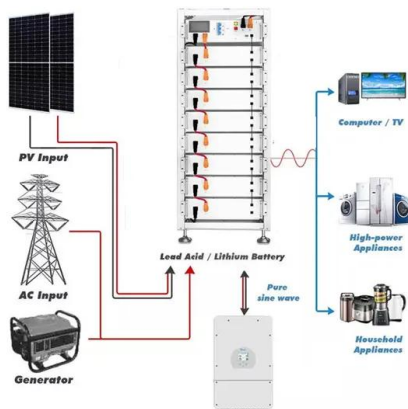


Guide to Solar Panel Sizes & Dimensions (November ...

If the solar panel system size you would like requires too many solar panels and thus, too much roof space, try opting for a larger solar panel size. Our table accounts for calculations with 250W panels.

Solar panel wiring basics: How to wire solar panels

Most modern solar panel installations use single-conductor Photovoltaic (PV) wire, between 10 and 12 gauge AWG. Wiring is required to connect the solar panels to the charge controller, inverter, and battery (in an off-grid system).



A Full Guide to Photovoltaic Array Design and ...

Determining the appropriate size and configuration for an array will depend on the energy requirements, available roof or ground space, and whether or not a battery storage system is being utilized. and system size. ...

Mounting Solar Modules and Estimating Parts

You should also determine the dimensions of each module and the orientation of the panels (portrait or landscape). Please refer to the

modules oriented in portrait as seen on the image below. To estimate total rail size, simply multiply the ...

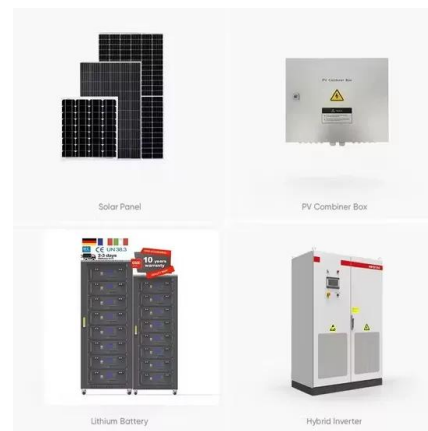


What Are The Different Types Of Solar Panel Connectors?

With rated parameters of 600V and 22 - 30 amps for an MC4 connector with a size of 2.5 - 4.0 mm², you can rest assured that this is the right connector for your PV modules. MC4 connectors are perfect for every ...

Series, Parallel & Series-Parallel Connection of PV Panels

Solar Module Cell: The solar cell is a two-terminal device. One is positive (anode) and the other is negative (cathode). A solar cell arrangement is known as solar module or solar panel where ...



The Ultimate Guide to Solar Panel Connectors

Solar panel connector is used to interconnect multiple solar panels with the portable power station. This Jackery guide will help you understand the concept of solar connector types in detail, how they work, and ...



Solar Panel Wiring Basics: Complete Guide & Tips to ...

Learning the basics of solar panel wiring is one of the most important tools in your repertoire of skills for safety and practical reasons, after all, residential PV installations feature voltages of up to 600V. There are three ...



Which Solar Panel Connector Is Positive? (Types Listed)

How Do You Tell The Positive And Negative Terminal Of A Solar Panel? Most solar panels will have the polarities of the terminals labeled. If the polarities are not labeled, two methods can be used to check. Make ...

The Ultimate Guide to MC4 Connectors , Solar Panel ...

The Solar cable of the appropriate size and type (typically, 10, 12, or 14 AWG, depending on the current and voltage ratings of your system) MC4 crimping tool (specifically designed for use with MC4 connectors)



Contact Us

For catalog requests, pricing, or partnerships, please visit:
<https://www.ian-solar.co.za>