

## Solar Energy South Africa

# What is the average slope of photovoltaic panels



## Overview

---

The ideal slope for photovoltaic panels<sup>1234</sup>:For maximum output in the continental U.S., the sweet spot is facing roughly south and tilted between 15 and 40 degrees.The ideal roof pitch generally ranges between 30 and 45 degrees, aligning closely with your location's latitude.

For maximum output, the sweet spot for solar panels in the continental U.S. is facing roughly south and tilted between 15 and 40 degrees, according to the Department of Energy.

The solar panel angle, also known as inclination, refers to the vertical tilt angle between the surface of the solar panel and the ground.

Solar panel angle is simply the vertical tilt of your solar panels. It can be a little more tricky to understand since the proper tilt will vary with geographic location and time of year.

What is the ideal roof pitch for solar panels?

The ideal roof pitch for solar panels generally ranges between 30 and 45 degrees, aligning closely with your location's latitude.What is the optimal tilt angle for solar panels?

The first number is the optimal tilt angle for your solar panels. This means my optimal tilt angle is 35° from horizontal. The second number is my optimal azimuth angle -- the direction I should face my solar panels -- expressed in degrees clockwise from north.

Why is the slope angle of solar panels important?

The preeminent slope angle of solar panels is an important determinant of falling solar radiation on the surface of photovoltaic panels. Characteristics of the position of latitude, the sun, and local geography must be explained and understood to determine the slope angle correctly.

What is the ideal solar panel angle?

The solar panel angle of your solar system is different depending on which part of the world you are. Solar panels give the highest energy output when they are directly facing the sun. The sun moves across the sky and will be low or high depending on the time of the day and the season. For that reason the ideal angle is never fixed.

What angle should solar panels be installed on a flat roof?

The best angle for a solar panel system in the UK is between 20° and 50°. At this kind of angle, your solar panels will be exposed to more sunlight, which will lead to more energy production and larger savings. If you want to install solar panels on a flat roof, you can still achieve the optimal angle by propping them onto a mounting system.

What is the best angle for solar panels in the UK?

Generally speaking, the best angle for solar panels in the UK is about 35 degrees from horizontal, although this varies very slightly around the country. A study from 2021 revealed that the best angle for solar panels is typically somewhere between the latitude of the location and 15 degrees below that figure.

How to calculate solar panel angle based on latitude?

Here are two simple methods for calculating approximate solar panel angle according to your latitude. The optimum tilt angle is calculated by adding 15 degrees to your latitude during winter, and subtracting 15 degrees from your latitude during summer.

## What is the average slope of photovoltaic panels

---

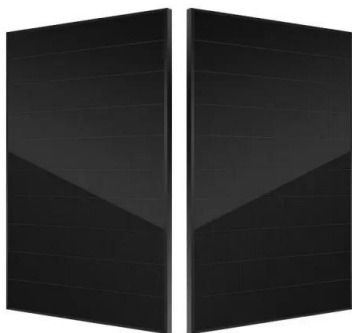


### What's the Best Angle for Solar Panels to Get ...

Another factor to consider is your home's roof slope. The average American home ranges in pitch from 4/12 (18 degrees) to 9/12 (37 degrees) 6. To find the optimal angle to mount your solar panels, take your ...

### [PVGIS user manual](#)

Slope of PV modules: This is the angle of the PV modules from the horizontal plane, for a fixed (non-tracking) mounting. it is important to check the monthly values of  $E_d$  and  $E_{lost\_d}$  as they inform about how the PV-battery system is ...



### Calculating Optimal Azimuth Angle for Solar Panels

With that, solar energy received per unit area per unit time--i.e., solar irradiance--also changes. For a particular location, the peak solar irradiance is when the sun is overhead. It happens around noon (11:00 PM to 2:00 PM), ...

### Best Angle for Solar Panels: It's Not Your Latitude

1. Our Solar Panel Tilt Angle Calculator. Because the research paper's formulas offer a slight improvement over latitude, a friend and I decided to code a free solar panel angle

calculator that uses the formulas to calculate the ...



## How to calculate the annual solar energy output of a photovoltaic ...

$r$  is the yield of the solar panel given by the ratio : electrical power (in kWp) of one solar panel divided by the area of one panel. Example : the solar panel yield of a PV module of 250 Wp ...

## Solar Panel Angle: how to calculate solar panel tilt ...

The solar panel angle of your solar system is different depending on which part of the world you are. Solar panels give the highest energy output when they are directly facing the sun. The sun moves across the sky and will ...



## Solar Panel Direction and Angle in India

Solar energy is a clean, abundant, and sustainable solution that you easily can calculate. In a diverse country like India, where sunlight is excess throughout the year, harnessing solar power has become crucial in the energy ...

## The best angle and direction for solar panels in the UK

39 degrees is clearly the best angle, followed by 38 and 37 degrees. However, as you can see, any of the angles used in this study would succeed in producing more than 3,400kWh (kilowatt-hours) per year - which ...



## Contact Us

---

For catalog requests, pricing, or partnerships, please visit:  
<https://www.ian-solar.co.za>