

Solar Energy South Africa

Wind power generation Wind power accident cases



Overview

What is the most common accident with wind turbines?

. data clearly shows that blade failure is the most common accident with wind turbines, closely followed by fire. Figure 4 shows a chronological summary of the previous mentioned accident table. The trend is as expected -as more turbines are built, more accidents occur. [.].

Are all wind turbine accidents real?

Without full access to all wind turbine accidents and their details, it is impossible to prove that the data used in the present study or related studies truly represent all wind turbine accidents.

Do wind turbine accidents occur during Operation and transportation?

The tabular and visual analyses relate accidents to location (offshore vs. onshore), wind turbine life cycle phases (transportation, construction, operation, and maintenance), and the incidence of death and injury. As one of the insights, more incidents were found to occur during operation and transportation.

What causes a wind turbine accident?

The first factor is the stage of the life cycle of the wind turbine at which the accident occurred, and the second factor was the cause of the wind turbine accident, namely, nature, system and equipment, or humans. The two outcomes were the occurrence of death, the occurrence of injury, or a combination of the two.

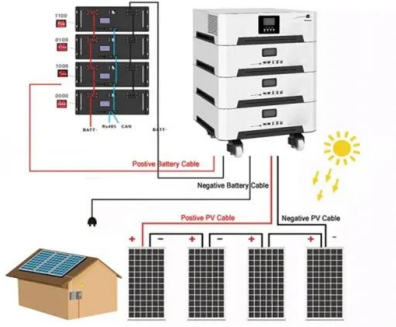
Should wind turbine manufacturers share their data on accidents?

Such a full dataset cannot practically be constructed by an independent research team, because it would not be possible to convince all wind turbine manufacturers to share all their data on accidents, let alone convince even one manufacturer.

Can text data predict death and injury incidences from wind turbine accident news reports?

We used data mining methods to predict death and injury incidences from text data in wind turbine accident news reports, and our study thus falls into this category, both with respect to the type of data collected and the application of data mining methods.

Wind power generation Wind power accident cases



Investigation of possible societal risk associated with wind power

In this work, the societal risk (SR) technique is applied considering the capacity of power generation by a wind power system, according to the following equation: $(2) SR = A \cdot N \dots$

Contact Us

For catalog requests, pricing, or partnerships, please visit:
<https://www.ian-solar.co.za>