

## Solar Energy South Africa

# Zambia cellcube corning



## Overview

---

What is the Corning cellcube system?

The Corning CellCube system provides a compact, perfusion-based method for the mass culture of attachment-dependent cells. CellCube modules consist of a series of 10, 25, or 100 parallel, polystyrene plates joined to create thin, sealed laminar flow spaces between adjacent plates.

What is a cellcube module?

CellCube modules are made of polystyrene plates joined together to create thin, sealed laminar flow spaces between adjacent plates and are coated with either a Tissue Culture-treated growth surface or Corning CellBIND® surface to enhance attachment.

How does the cellcube system work?

Utilizing a perfusion-based design, the CellCube system is able to mimic the constant fluid flow of in vivo conditions and reliably distribute nutrients and oxygen with low differential gradients across all attached cells throughout the modules.



## Corning® CellCube® Modules

The Corning CellCube system provides a fast, simple, and compact method for the mass culture of attachment-dependent cells. It uses a tissue culture-treated growth surface for cell attachment, and continually perfuses the cells with fresh medium for increased cell productivity. The CellCube system provides an environment which more closely simulates in vivo conditions and reliably ...



### **3201 , 25?CellCube® ??,????21,250cm<sup>2</sup> , Corning**

CellCube????????????????,?????100%?????????????  
 ?????????,????????????????????????????????????  
 ,????????????????  
 ??CellCube?????:????????????????,?????????

## CellCube® , Corning

Corning® 45 mm Polypropylene Cap, Autoclavable with 2 Stainless Steel Tubing Ports 1 Products. Corning® CellCube® Modules 10 Products. E-Cube(TM) Culture System Kit (without CellCube® Module) 1 Products. Corning® CellCube® Culture System Clean Room Cart with Tray 1 ...



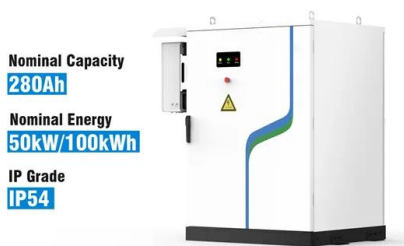
### **3264 , 100?CellCube® ??,????85,000cm<sup>2</sup> , Corning**

CellCube????????????????,?????100%?????????????  
 ?????????,????????????????????????????????????  
 ,?????????????????CellCube?????:  
 ?????????????????,?????????



## 3032 , Corning<sup>®</sup> CellBIND<sup>®</sup> 100-Layer CellCube<sup>®</sup> Module with ...

The CellCube Module is an integral, encapsulated, sterile, single-use device that is 100% pressure-hold tested before shipment. It is comprised of a series of parallel, styrene plates joined to create thin, sealed, laminar flow spaces between adjacent plates. Each culture plate receives proprietary tissue culture treatment prior to assembly to ensure dense, uniform cell growth.



## Corning<sup>®</sup> CellCube<sup>®</sup> Culture System Clean Room ...

The CellCube Culture System Clean Room Cart is a device designed for simplified installation, filling, seeding, operation and harvesting of up to four 100-layer CellCube modules. The cart is a stainless steel, autoclavable, mobile ...

## Corning<sup>®</sup> CellCube<sup>®</sup> Cell Culture System

The Corning CellCube system provides a compact, perfusion-based method for the mass culture of attachment-dependent cells. CellCube

modules are made of polystyrene plates joined together to create thin, sealed laminar flow spaces between adjacent plates and are coated with either a Tissue Culture-treated growth surface or Corning CellBIND<sup>®</sup> surface to enhance attachment.



## Corning<sup>®</sup> CellCube<sup>®</sup> Culture System Cell Expansion Protocol

CellCube system, the design of the modules allows for reliable distribution of nutrients and oxygen with low differential gradients across all cells within the modules. Corning CellCube 100-layer module Digital controller\* Peristaltic pump\* Loop 1 Base Gas Loop 2 Outlet Inlet SUB\* Figure 1. Schematic of the Corning CellCube Closed System.

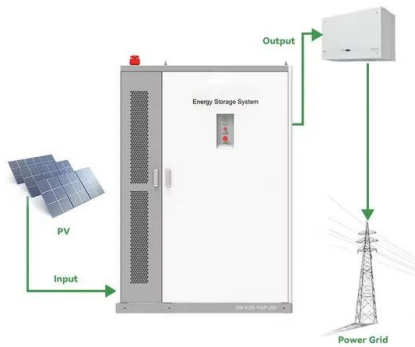
## Corning<sup>®</sup> CellBIND<sup>®</sup> 100?CellCube<sup>®</sup> ??,????85,000cm<sup>2</sup>

??CellCube?????: ??????????????,????????????????  
 85,000cm<sup>2</sup>????????,??Corning<sup>®</sup> CellBIND<sup>®</sup>  
 ??????,????????? ??????,?????????,????????????????  
 ????????



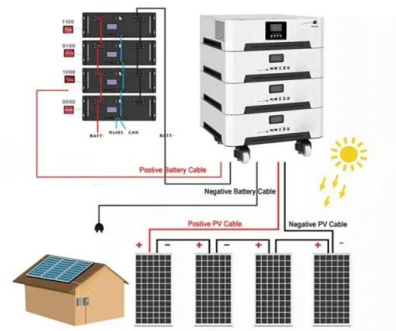
## 3200 , 10?CellCube<sup>®</sup> ??,????8,500cm<sup>2</sup> , Corning

CellCube?????????????,?????100%????????????  
 ?????????,????????????????????????????????  
 ,????????????????? ??CellCube?????:  
 ??????????????,?????????



### 3304 , Corning® CellBIND® 25-Layer CellCube® Module with ...

The CellCube Module is an integral, encapsulated, sterile, single-use device that is 100% pressure-hold tested before shipment. It is comprised of a series of parallel, styrene plates joined to create thin, sealed, laminar flow spaces between adjacent plates. Each culture plate receives proprietary tissue culture treatment prior to assembly to ensure dense, uniform cell growth.



### 3241 , Corning® CellCube®, 25-Layer, CellBIND® Surface, ...

Corning's Closed System CellCube® Modules are now available with CellBIND® surface treatment. A complete range of standard closed system accessories integrate seamlessly with AseptiQuik® and MPC connectors for total adherent cell culture workflow solutions. Stands and carts are also available to link multiple CellCubes, enabling modular scale out in a small ...

### 3233 , 100-Layer CellCube®

## Module with 85,000 cm<sup>2</sup> Growth ...

Introducing Corning's Closed System Cell Cube - a new closed system offering designed to help reduce the risk of adventitious contamination. Our new offering of CellCube 10, 25, 100 modules, circulation loops, and connectors allows for easy adherent cell scale-up that integrate seamlessly with AseptiQuik® and MPC connectors. 85,000 cm<sup>2</sup> Surface Area Corning TCT surface ...

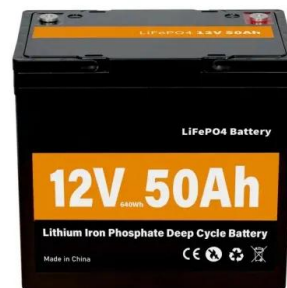


## Corning® CellCube® Tubing Manifold, 3/8"ID Thermoelastic ...

Corning® CellCube® Tubing Manifold, 3/8"ID Thermoelastic Tubing, Cross Connection, 4 Aseptic Connectors Product Number 3235. Corning EcoChoice(TM) products are produced, packaged, and/or distributed in an environmentally friendly manner following United States Government Federal Trade Commission (FTC) Guidelines Learn More.

## [Corning® CellCube® ?? , Corning](#)

??CellCube??  
 ????????????,???????????????,??????????CellCube??????????????  
 ???????,??



## [Corning® CellCube® Systems , Corning](#)

Corning CellCube ???  
 ???

????????????????????CellCube ???????in vivo  
 ?????????????????????



**Corning® CellBIND®  
 25?CellCube®  
 ??,????21,250cm<sup>2</sup>**

??CellCube?????: ?????????????????,????????????????  
 21,250cm<sup>2</sup>????????,??Corning® CellBIND®  
 ??????,????????? ...



**100-Layer CellCube® Module  
 with 85,000cm<sup>2</sup> Growth  
 Surface**

The CellCube Module is an integral, encapsulated, sterile, single-use device that is 100% pressure-hold tested before shipment. It is comprised of a series of parallel, styrene plates joined to create thin, sealed, laminar flow spaces between adjacent plates. Each culture plate receives proprietary tissue culture treatment prior to assembly to ensure dense, uniform cell growth.

**3304 , Corning® CellBIND®  
 25-Layer CellCube® ...**

These CellCube Modules provide: a series of parallel, polystyrene plates joined to create thin, sealed, laminar flow spaces between adjacent plates; 21,250cm<sup>2</sup> polystyrene growth surface

optimally treated with Corning® CellBIND® ...



### **Corning® CellCube® Culture System Clean Room Cart with Tray**

The CellCube Culture System Clean Room Cart is a device designed for simplified installation, filling, seeding, operation and harvesting of up to four 100-layer CellCube modules. The cart is a stainless steel, autoclavable, mobile rack that can hold four CellCube modules in a small footprint. The modules can be rotated 360 degrees, and has an adjustable wheelbase which can be ...

### [Corning® CellCube® Systems](#)

The Corning CellCube system provides a fast, simple, and compact method for the mass culture of attachment-dependent cells. It uses a tissue culture-treated growth surface for cell attachment, and continually perfuses the cells with fresh medium for increased cell productivity. The CellCube system provides an environment which more closely simulates in vivo conditions and reliably ...



## **Contact Us**

---

For catalog requests, pricing, or partnerships, please visit:  
<https://www.ian-solar.co.za>